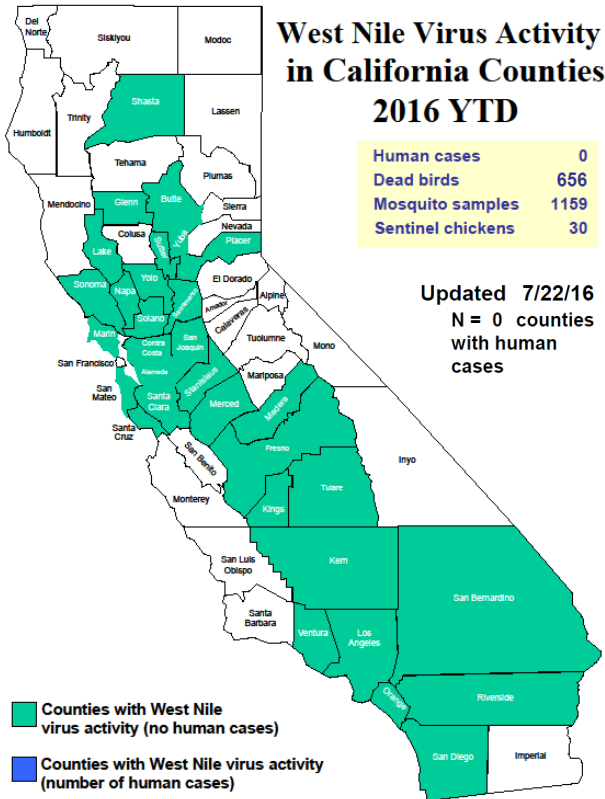




San Mateo County Health System

West Nile Virus Report



West Nile Virus Activity		
<i>California (as of 7/22/16)</i>	SMC ¹	CA ¹
Human Cases	0	0
Human Deaths	0	0
Dead Birds	6	656
Mosquito Pools	0	1159
Sentinel Chickens	0	30
<i>Nationwide</i> ^{2†}	Activity	
Human Cases	—	
Human Deaths	—	
Human Activity*	—	
Non-Human Activity**	—	

*includes cases with West Nile neuroinvasive disease, West Nile fever; excludes asymptomatic infections
 **includes WNV veterinary disease cases and WNV infections in mosquitoes, birds, sentinel animals
 †Nationwide numbers for this season have not been published

San Mateo County Mosquito & Vector Control District Response	
<i>Fogging Location (as of 7/28/16)</i>	Date
Redwood City and Atherton	7/29 PM—7/30 AM

Note: Questions regarding mosquito fogging activities should be directed to the San Mateo County Mosquito & Vector Control District at (650) 344-8592.

CDPH reports increased WNV activity

An [increase in statewide West Nile Virus activity](#) has been reported by the California Department of Public Health. West Nile Virus was [detected in birds and mosquitoes in San Mateo County](#) and the San Mateo County Mosquito and Vector Control District has scheduled fogging treatment. This detection is not yet reflected in the tables above. There have been no human cases this season. To prevent West Nile Virus, eliminate standing water around your home and take steps to [protect yourself from mosquito bites](#).

DEAD BIRD REPORTING:

- All dead bird reports and pick up should be directed to the California Department of Public Health by:
 - Calling 1-877-WNV-BIRD (877-968-2473), Sunday through Friday, 8 AM—4:30 PM
 - OR
 - Online reporting at: www.westnile.ca.gov/report_wnv.php
- Birds or squirrels which are not picked up within 24 hours should be disposed of in the following manner:
 - Use gloves, a plastic bag, or shovel to pick up the animal
 - Place into an outside trash can
 - Wash your hands
- There is no evidence that the WNV virus can be acquired by handling dead birds or squirrels

ADDITIONAL RESOURCES:

- CDC: www.cdc.gov/westnile
- CDPH WNV Website: www.westnile.ca.gov
- San Mateo County Health System: www.smchealth.org/WNV
- San Mateo County Mosquito and Vector Control District: www.smcmvcd.org or (650) 344-8592
- All inquiries from the press or politicians should be directed to the Public Information Officer at (650) 867-1661

Data Sources:

- (1) California Department of Public Health (CDPH), Vector-Borne Disease Section as of July 22, 2016 (www.westnile.ca.gov)
- (2) Centers for Disease Control and Prevention (CDC) as of January 12, 2016 (www.cdc.gov/westnile)