



NEED HELP?

**You don't have to struggle
alone anymore.**

CALL 650-573-2502

ASK FOR THE

PERINATAL ADDICTION OUTREACH TEAM

SAFE AND CONFIDENTIAL

WHO WE ARE

The **Perinatal Addiction Outreach Team** is a home visiting team of social workers and community workers providing a comprehensive range of case management services, education on child development, parenting, and chemical dependency, developmental screenings, advocacy and supportive counseling to pregnant and/or parenting women with children zero to five within San Mateo County identified to be at risk for substance use. We work with clients at any point along the continuum from denial through treatment and recovery.

Our philosophy is one of “meeting the clients where they are at”. We approach clients in a nonjudgmental manner with the goal of building trust in order to assist them in moving along the continuum of change. We accept self-referrals. Services are available in English and Spanish.

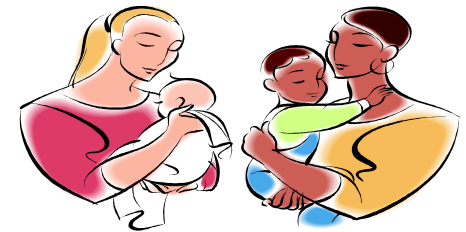
We provide assistance in linking to the following services:

- Childcare resources
- WIC-food assistance
- Medi-Cal-no cost or share of cost health insurance
- Prenatal care-medical care while you are pregnant
- Parent support groups or classes
- Other community resources

**WE WILL MEET YOU IN A PLACE
WHERE YOU FEEL SAFE AND
COMFORTABLE TALKING – HOME,
PARK, COFFEE SHOP**

When YOU are ready we will:

- Connect you with resources that can help you with your alcohol and drug struggles
- Support you before and after your delivery, as you become a parent or as you continue to parent
- Support you as you make important decisions about you and your family
- Help you gain confidence as a parent



Prenatal-to-Three Initiative
San Mateo County Family Health Services
2000 Alameda de las Pulgas, San Mateo, CA 94403
650-573-2502
Fax: (650) 341-0674

