

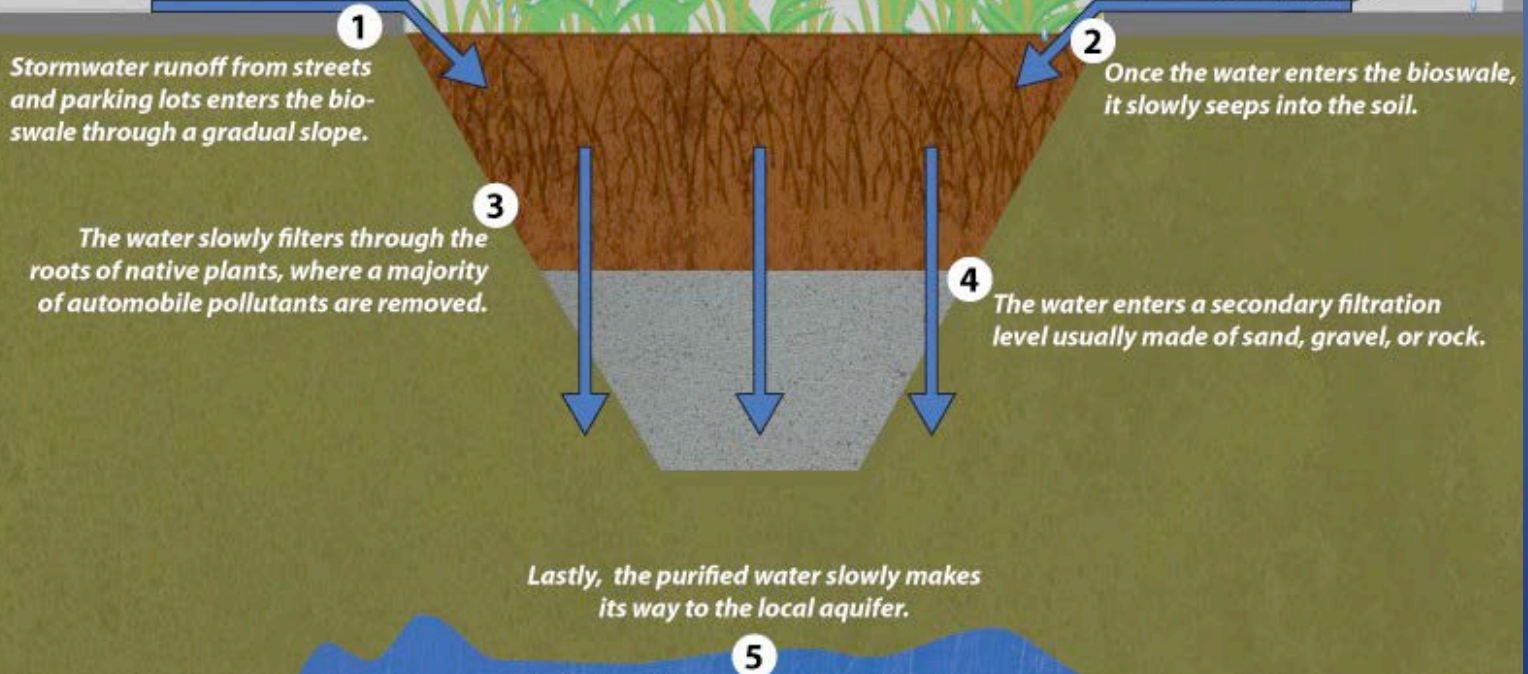
Bioswales and Raingardens

Chuck Kozak
Go Native, Inc

What is a Bioswale?

A bioswale is a ditch that allows for rainwater to soak into the earth slowly, rather than flooding streets or going into the ocean.

Here's how it works:



Bioswale Configurations



Lake County, Illinois



Pogonip Park, Santa Cruz CA

Welcome to Our Rain Garden

Nature's water filter: soaks up and cleans our water

Puget Sound
Starts Here.org



What is a rain garden?

A planted depression that can collect, soak up and filter stormwater runoff from roofs, driveways, streets, parking lots and other hard surfaces.

What are the benefits?

- Reduce flooding
- Remove pollutants
- Replenish ground water
- Provide native plant habitat for wildlife

What about mosquitoes?

A rain garden absorbs water quickly – within 48 hours – and will not provide habitat for mosquitoes.

Native plants are easy and inexpensive to maintain



Kitsap County Surface and Storm Water Management (SSWM)

Rain Garden Configurations

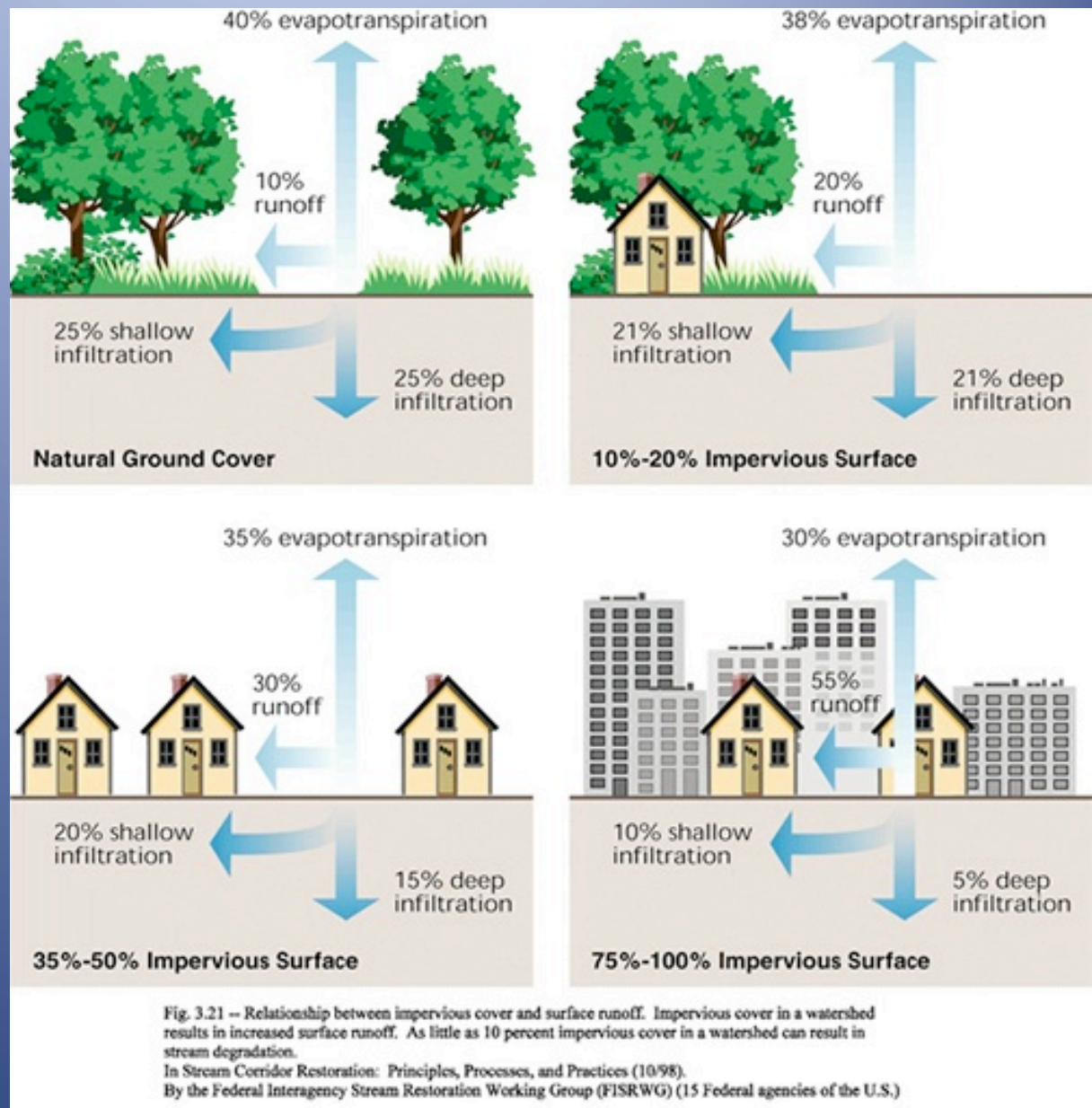


Residential Rain Garden in Southern California - Riverside County Flood Control and Water Conservation District



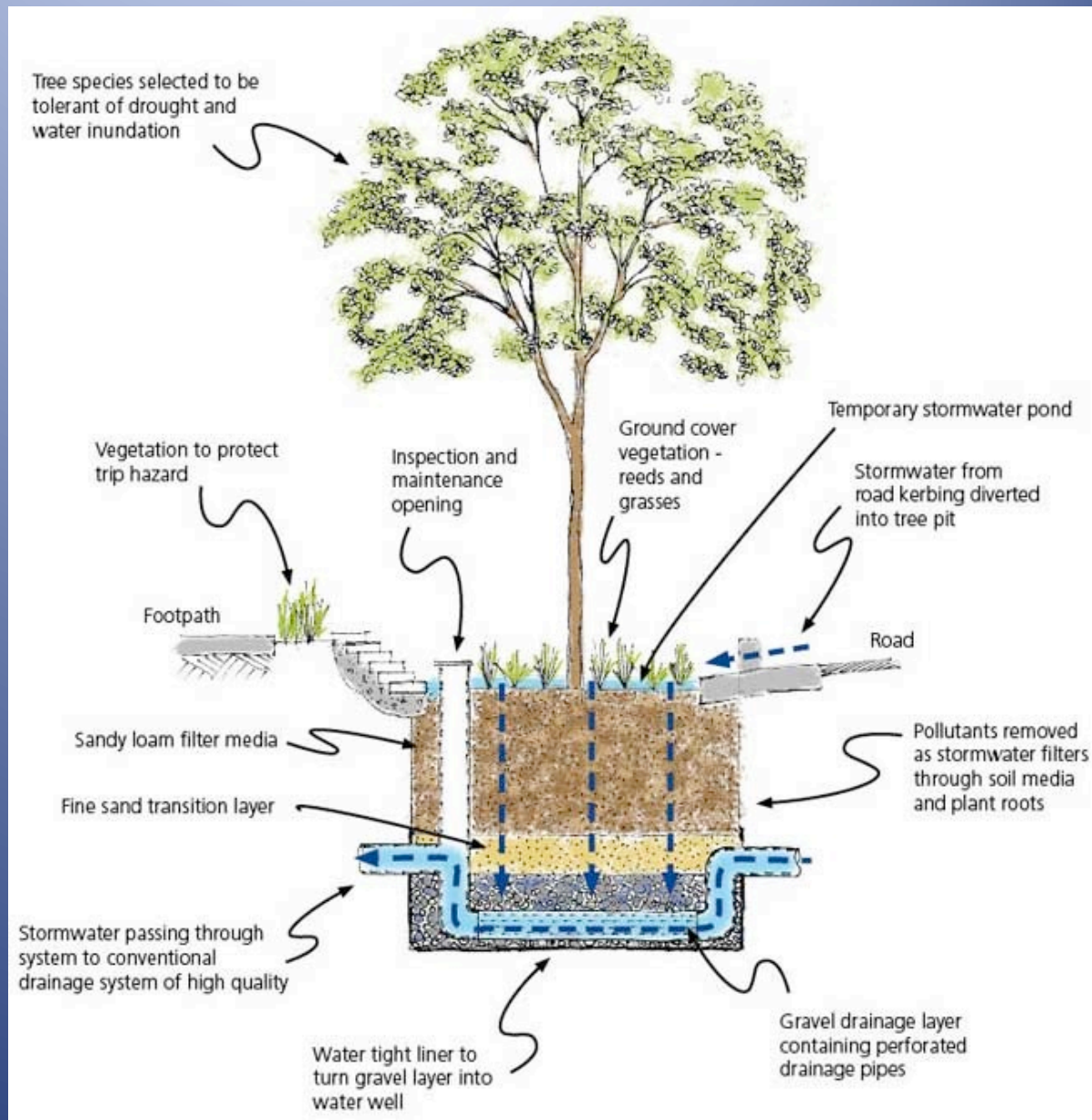
Rain garden in Portland Oregon fed by street runoff.

Why is Bio-vention needed?



Bio-filtration systems of Rain Gardens and Bioswales

City of West Torrens, Australia





Design Considerations

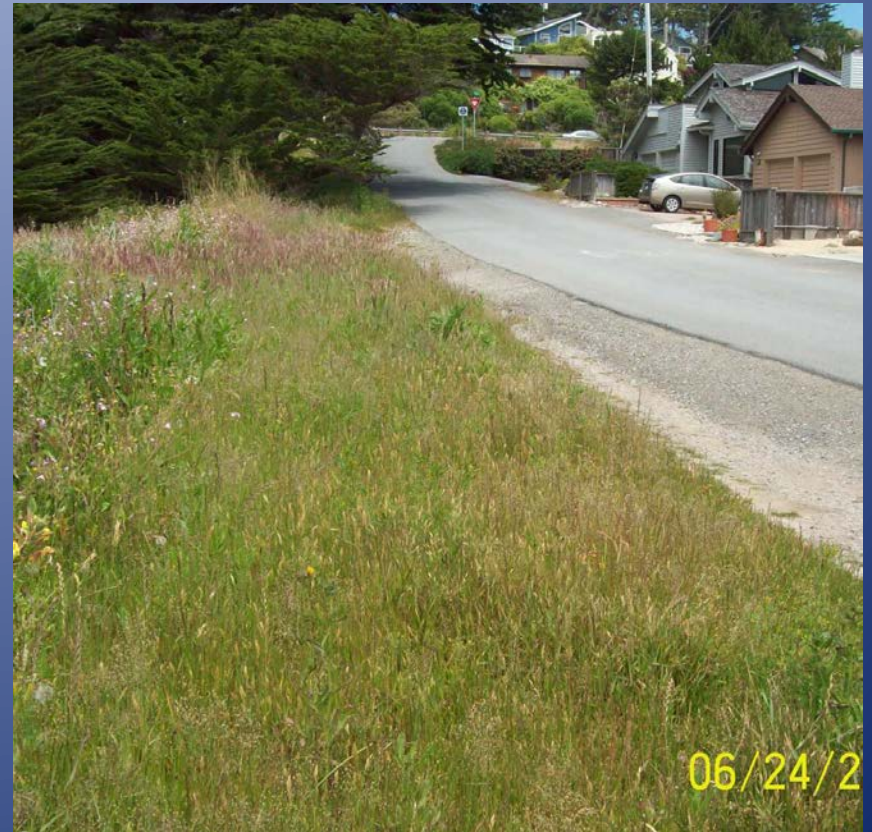
SEA Streets Seattle drainage ditch retrofitted with terraced planting areas and check dams to increase water infiltration

Bioswale Test Sites

Cypress Ave



Juliana Ave



Cypress Ave Trench



Juliana Ave Trench





Installation of filter fabric, drain rock and rain pipe at Juliana Swale



Installation of biosoil and erosion control material at Juliana Swale



Construction of rock weirs at Juliana Swale



Finished rock weirs and paver installation at Juliana Swale



Installation of Native Plants at Cypress Swale

Finish Work at Juliana



Completed Cypress Swale





Conclusions