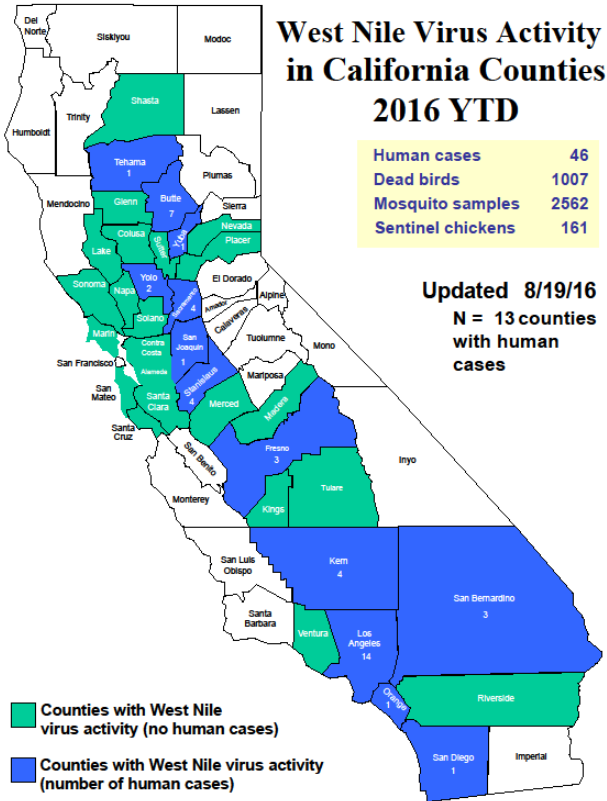




San Mateo County Health System

West Nile Virus Report



West Nile Virus Activity		
California (as of 8/19/16)	SMC¹	CA¹
Human Cases	0	46
Human Deaths	0	2
Dead Birds	10	1007
Mosquito Pools	5	2562
Sentinel Chickens	0	161
Nationwide (as of 8/23/16)	Activity	
Human Cases	301	
Human Deaths	7	
Human Activity*	29 states	
Non-Human Activity**	37 states	

*includes cases with West Nile neuroinvasive disease, West Nile fever; excludes asymptomatic infections

**includes WNV veterinary disease cases and WNV infections in mosquitoes, birds, sentinel animals

San Mateo County Mosquito & Vector Control District Response	
Fogging Location (as of 8/19/16)	Date
Redwood City and Atherton	7/29 PM—7/30 AM
Atherton and Unincorporated San Mateo County	8/4 PM—8/5 AM
San Mateo and Foster City	8/14 PM—8/15 AM

Note: Questions regarding mosquito fogging activities should be directed to the San Mateo County Mosquito & Vector Control District at (650) 344-8592.

End of Summer Travel Zika Awareness

As the summer winds down, the California Department of Public Health is urging the public to stay vigilant after summer travel from Zika-affected areas by the following recommendations made by the Director and State Health Officer, Dr. Karen Smith: "Continue using insect repellent to prevent spreading the virus to mosquitoes in your community upon your return and refrain from unprotected sex so you don't pass the virus to your partner." The full statement can be accessed [here](#). To prevent mosquito-borne diseases, eliminate standing water around your home and take steps to [protect yourself from mosquito bites](#).

DEAD BIRD REPORTING:

- All dead bird reports and pick up should be directed to the California Department of Public Health by:
 - Calling 1-877-WNV-BIRD (877-968-2473), Sunday through Friday, 8 AM—4:30 PM
 - OR
 - Online reporting at: www.westnile.ca.gov/report_wnv.php
- Birds or squirrels which are not picked up within 24 hours should be disposed of in the following manner:
 - Use gloves, a plastic bag, or shovel to pick up the animal
 - Place into an outside trash can
 - Wash your hands
- There is no evidence that the WNV virus can be acquired by handling dead birds or squirrels

ADDITIONAL RESOURCES:

- CDC: www.cdc.gov/westnile
- CDPH WNV Website: www.westnile.ca.gov
- San Mateo County Health System: www.smchealth.org/WNV
- San Mateo County Mosquito and Vector Control District: www.smcmvcd.org or (650) 344-8592
- All inquiries from the press or politicians should be directed to the Public Information Officer at (650) 867-1661

Data Sources:

- (1) California Department of Public Health (CDPH), Vector-Borne Disease Section as of August 22, 2016 (www.westnile.ca.gov)
- (2) Centers for Disease Control and Prevention (CDC) as of August 23, 2016 (www.cdc.gov/westnile)