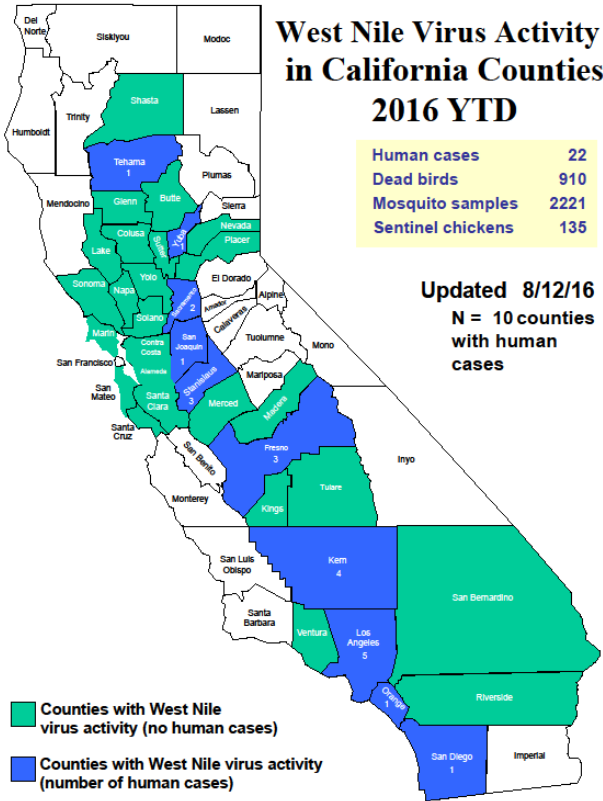




San Mateo County Health System

West Nile Virus Report



West Nile Virus Activity		
California (as of 8/15/16)	SMC¹	CA¹
Human Cases	0	22
Human Deaths	0	1
Dead Birds	10	910
Mosquito Pools	4	2221
Sentinel Chickens	0	135
Nationwide (as of 8/16/16)	Activity	
Human Cases	213	
Human Deaths	5	
Human Activity*	26 states	
Non-Human Activity**	34 states	

*includes cases with West Nile neuroinvasive disease, West Nile fever; excludes asymptomatic infections
 **includes WNV veterinary disease cases and WNV infections in mosquitoes, birds, sentinel animals

San Mateo County Mosquito & Vector Control District Response	
Fogging Location (as of 8/15/16)	Date
Redwood City and Atherton	7/29 PM—7/30 AM
Atherton and Unincorporated San Mateo County	8/4 PM—8/5 AM
San Mateo and Foster City	8/14 PM—8/15 AM

Note: Questions regarding mosquito fogging activities should be directed to the San Mateo County Mosquito & Vector Control District at (650) 344-8592.

St. Louis Encephalitis

St. Louis Encephalitis Virus (SLEV) is a *Flavivirus* that is closely related to West Nile Virus (WNV). Similar to WNV, most people infected with SLEV have no symptoms or mild flu-like symptoms, though some individuals, such as those with a weakened immune system, may have more severe symptoms. Both SLEV and WNV can be spread to humans by the bite of infected *Culex sp.* mosquitoes. While [mosquitoes in the Coachella Valley tested positive for SLEV in 2015 and 2016](#), SLEV has not been detected in San Mateo County. Prior to 2015, SLEV was last detected in California in 2003. More information on SLEV can be found [here](#). There have been no human cases of SLEV or WNV in San Mateo County this season. To prevent mosquito-borne diseases, eliminate standing water around your home and take steps to [protect yourself from mosquito bites](#).

DEAD BIRD REPORTING:

- All dead bird reports and pick up should be directed to the California Department of Public Health by:
 - Calling 1-877-WNV-BIRD (877-968-2473), Sunday through Friday, 8 AM—4:30 PM
 - OR
 - Online reporting at: www.westnile.ca.gov/report_wnv.php
- Birds or squirrels which are not picked up within 24 hours should be disposed of in the following manner:
 - Use gloves, a plastic bag, or shovel to pick up the animal
 - Place into an outside trash can
 - Wash your hands
- There is no evidence that the WNV virus can be acquired by handling dead birds or squirrels

ADDITIONAL RESOURCES:

- CDC: www.cdc.gov/westnile
- CDPH WNV Website: www.westnile.ca.gov
- San Mateo County Health System: www.smchealth.org/WNV
- San Mateo County Mosquito and Vector Control District: www.smcmvcd.org or (650) 344-8592
- All inquiries from the press or politicians should be directed to the Public Information Officer at (650) 867-1661

Data Sources:

- (1) California Department of Public Health (CDPH), Vector-Borne Disease Section as of August 15, 2016 (www.westnile.ca.gov)
- (2) Centers for Disease Control and Prevention (CDC) as of August 16, 2016 (www.cdc.gov/westnile)