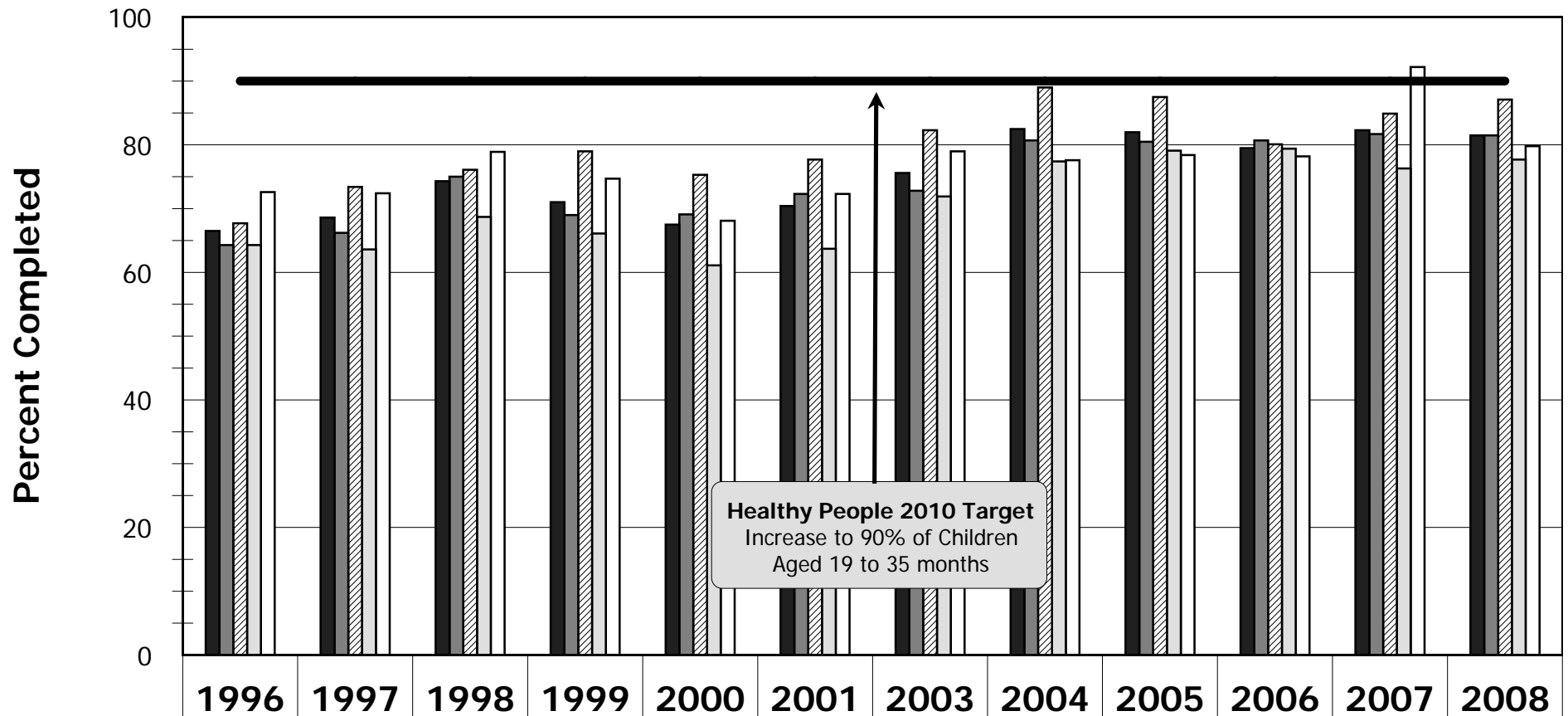


Vaccine Coverage At Age 24 Months By County Region

Complete 4-3-1 Series*, San Mateo County, 1996-2008



| | 1996 | 1997 | 1998 | 1999 | 2000 | 2001 | 2003 | 2004 | 2005 | 2006 | 2007 | 2008 |
|--------------|------|------|------|------|------|------|------|------|------|------|------|------|
| All County | 66.5 | 68.6 | 74.3 | 71 | 67.5 | 70.4 | 75.6 | 82.5 | 82 | 79.5 | 82.3 | 81.5 |
| North-County | 64.3 | 66.2 | 75 | 69 | 69.1 | 72.3 | 72.8 | 80.7 | 80.5 | 80.7 | 81.7 | 81.5 |
| Mid-County | 67.7 | 73.4 | 76.1 | 79 | 75.3 | 77.7 | 82.3 | 89 | 87.5 | 80.1 | 84.9 | 87.1 |
| South-County | 64.3 | 63.6 | 68.7 | 66.1 | 61.1 | 63.7 | 71.9 | 77.4 | 79.1 | 79.4 | 76.3 | 77.7 |
| Coastside | 72.6 | 72.4 | 78.9 | 74.7 | 68.1 | 72.3 | 79 | 77.6 | 78.4 | 78.2 | 92.2 | 79.8 |

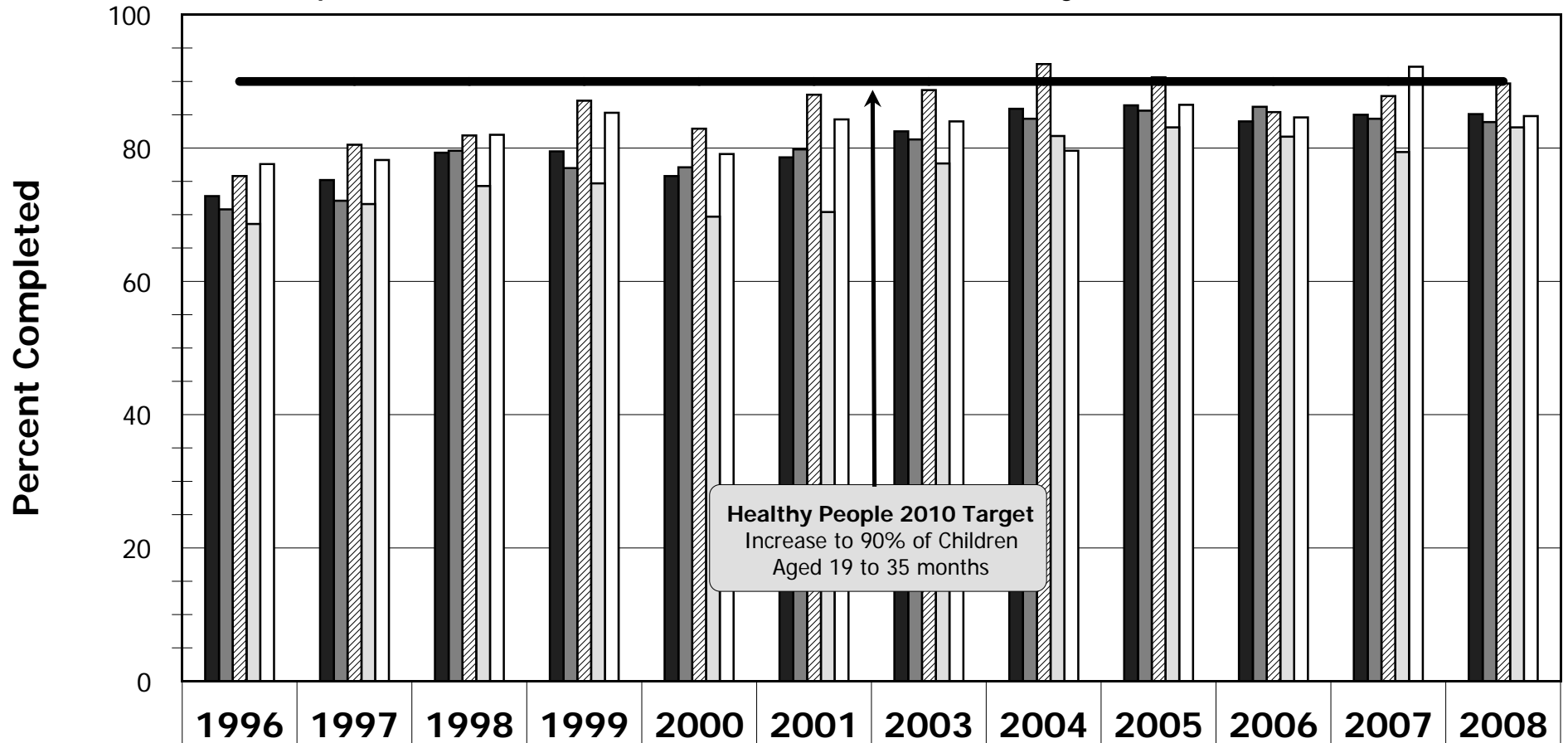
*Complete 4-3-1 series refers to all DTP/DTaP4, OPV/IPV3, and MMR1

Note: Year indicates year of study sample, 2002 data unavailable

Source Data: San Mateo County Immunization Program, Kindergarten Retrospective Surveys

Vaccine Coverage At Age 24 Months By County Region

Complete DTP/DTaP4 Series, San Mateo County, 1996-2008



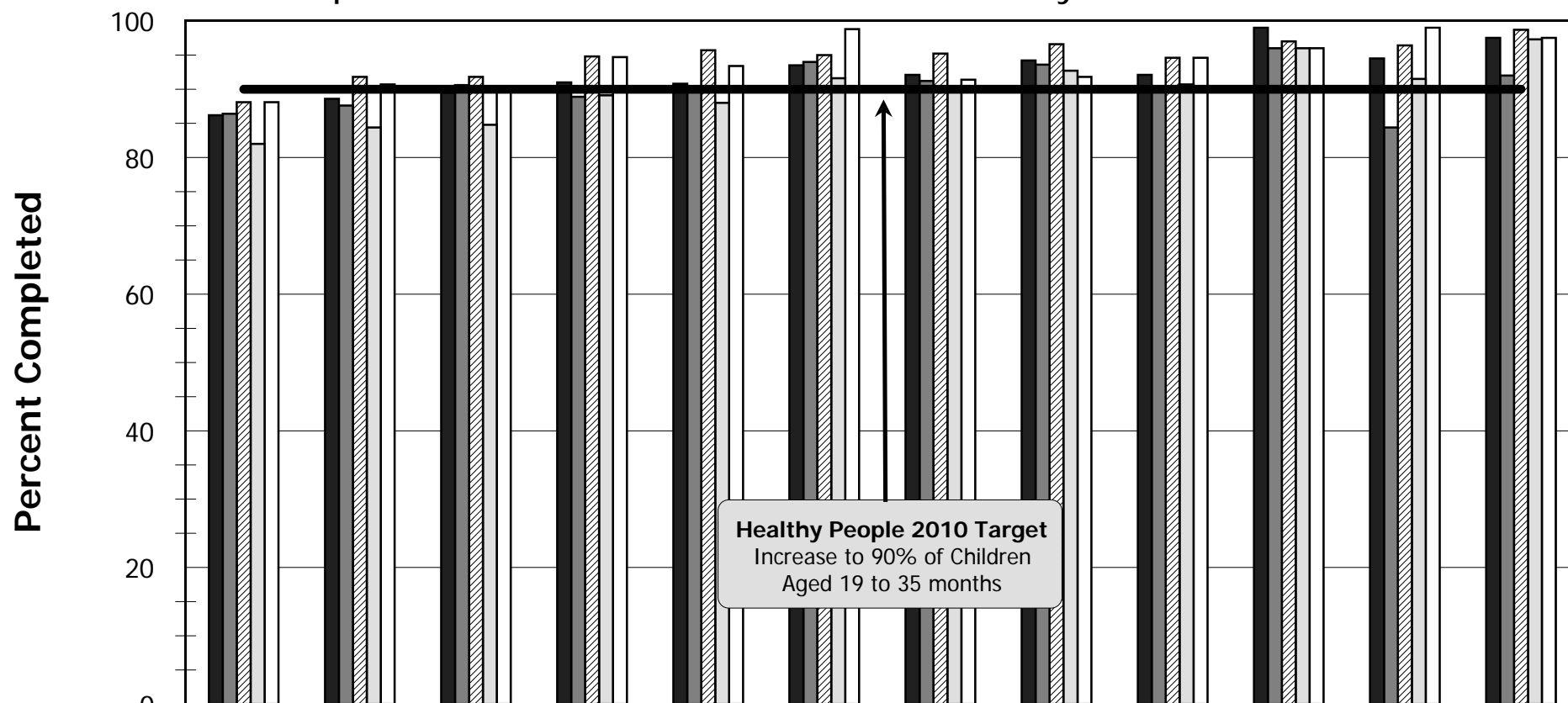
| | 1996 | 1997 | 1998 | 1999 | 2000 | 2001 | 2003 | 2004 | 2005 | 2006 | 2007 | 2008 |
|--------------|------|------|------|------|------|------|------|------|------|------|------|------|
| All County | 72.8 | 75.2 | 79.3 | 79.5 | 75.8 | 78.6 | 82.5 | 85.9 | 86.4 | 84 | 85 | 85.1 |
| North-County | 70.8 | 72.1 | 79.6 | 77 | 77.1 | 79.8 | 81.3 | 84.4 | 85.6 | 86.2 | 84.4 | 83.9 |
| Mid-County | 75.8 | 80.5 | 81.9 | 87.1 | 82.9 | 88 | 88.7 | 92.6 | 90.6 | 85.4 | 87.8 | 89.7 |
| South-County | 68.6 | 71.6 | 74.3 | 74.7 | 69.7 | 70.4 | 77.7 | 81.8 | 83.1 | 81.7 | 79.4 | 83.1 |
| Coastside | 77.6 | 78.2 | 82 | 85.3 | 79.1 | 84.3 | 84 | 79.6 | 86.5 | 84.6 | 92.2 | 84.8 |

Note: Year indicates year of study sample, 2002 data unavailable

Source Data: San Mateo County Immunization Program, Kindergarten Retrospective Surveys

Vaccine Coverage At Age 24 Months By County Region

Complete OPV/IPV3 Series, San Mateo County, 1996-2008



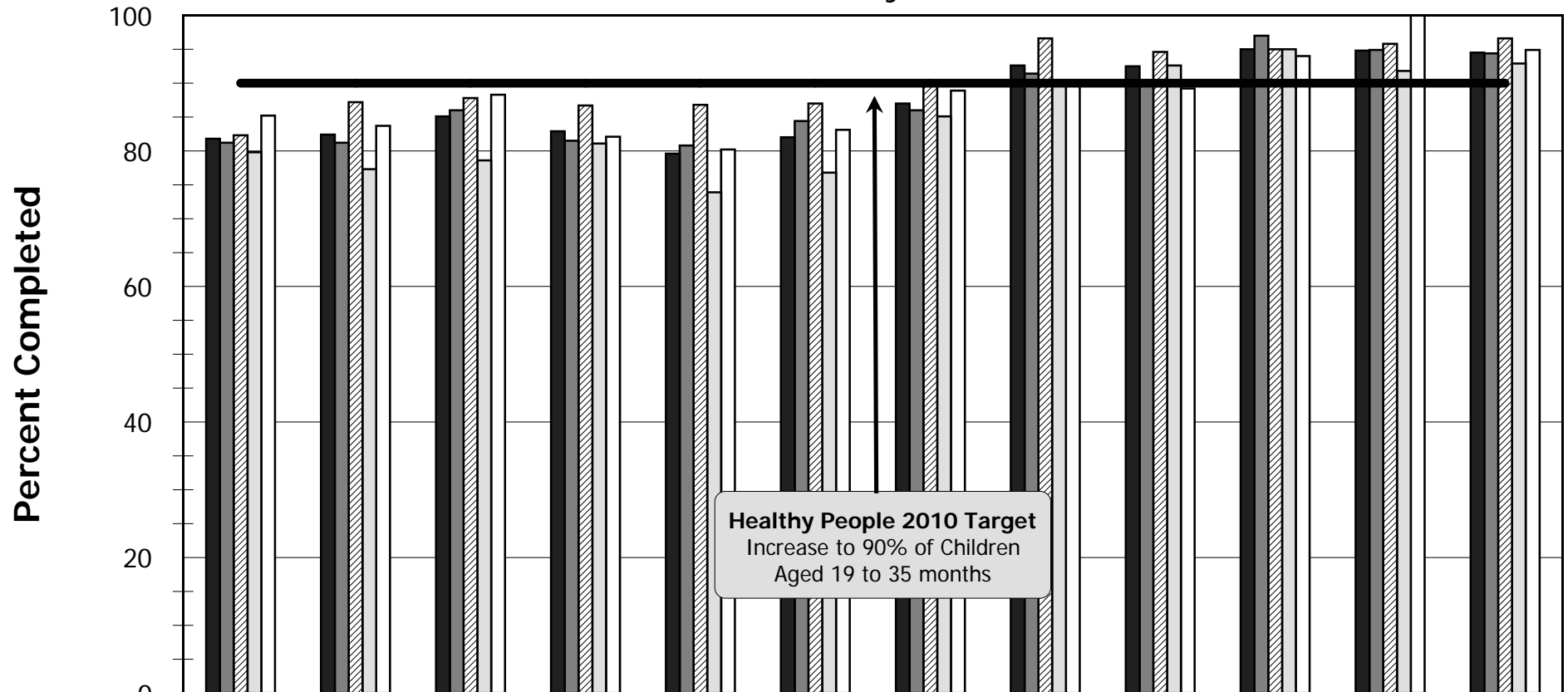
| | 1996 | 1997 | 1998 | 1999 | 2000 | 2001 | 2003 | 2004 | 2005 | 2006 | 2007 | 2008 |
|--|------|------|------|------|------|------|------|------|------|------|------|------|
| All County | 86.2 | 88.6 | 89.5 | 91 | 90.8 | 93.5 | 92.1 | 94.2 | 92.1 | 99 | 94.5 | 97.5 |
| North-County | 86.4 | 87.6 | 90.6 | 88.9 | 89.7 | 94 | 91.2 | 93.6 | 90.4 | 96 | 84.4 | 92 |
| Mid-County | 88.1 | 91.8 | 91.8 | 94.8 | 95.7 | 95 | 95.2 | 96.6 | 94.6 | 97 | 96.4 | 98.7 |
| South-County | 82 | 84.4 | 84.8 | 89.1 | 88 | 91.6 | 90.4 | 92.7 | 90.7 | 96 | 91.5 | 97.3 |
| Coastside | 88.1 | 90.7 | 89.8 | 94.7 | 93.4 | 98.8 | 91.4 | 91.8 | 94.6 | 96 | 99 | 97.5 |

Note: Year indicates year of study sample, 2002 data unavailable

Source Data: San Mateo County Immunization Program, Kindergarten Retrospective Surveys

Vaccine Coverage At Age 24 Months By County Region

MMR1, San Mateo County, 1996-2008



Healthy People 2010 Target
Increase to 90% of Children
Aged 19 to 35 months

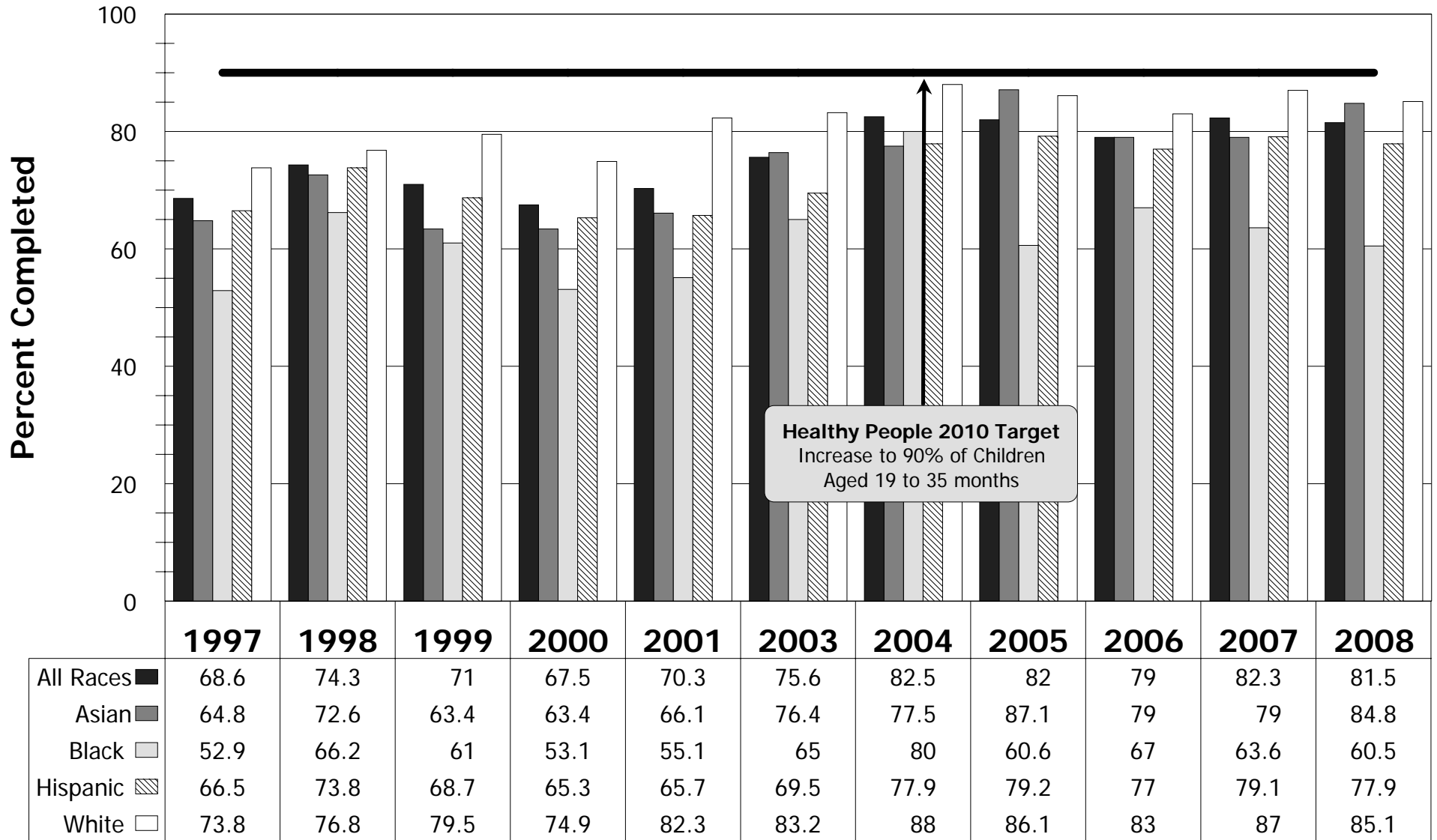
| | 1996 | 1997 | 1998 | 1999 | 2000 | 2001 | 2003 | 2004 | 2005 | 2006 | 2007 | 2008 |
|--------------|------|------|------|------|------|------|------|------|------|------|------|------|
| All County | 81.8 | 82.4 | 85.1 | 82.9 | 79.6 | 82 | 87 | 92.6 | 92.5 | 95 | 94.8 | 94.5 |
| North-County | 81.2 | 81.2 | 86 | 81.5 | 80.8 | 84.4 | 86 | 91.4 | 90.4 | 97 | 94.9 | 94.4 |
| Mid-County | 82.3 | 87.2 | 87.8 | 86.7 | 86.8 | 87 | 90.1 | 96.6 | 94.6 | 95 | 95.8 | 96.6 |
| South-County | 79.8 | 77.3 | 78.6 | 81.1 | 73.9 | 76.8 | 85.1 | 90.1 | 92.6 | 95 | 91.8 | 92.9 |
| Coastside | 85.2 | 83.7 | 88.3 | 82.1 | 80.2 | 83.1 | 88.9 | 89.8 | 89.2 | 94 | 100 | 94.9 |

Note: Year indicates year of study sample, 2002 data unavailable

Source Data: San Mateo County Immunization Program, Kindergarten Retrospective Surveys

Vaccine Coverage At Age 24 Months By Race/Ethnicity

Complete 4-3-1 Series*, San Mateo County, 1997-2008



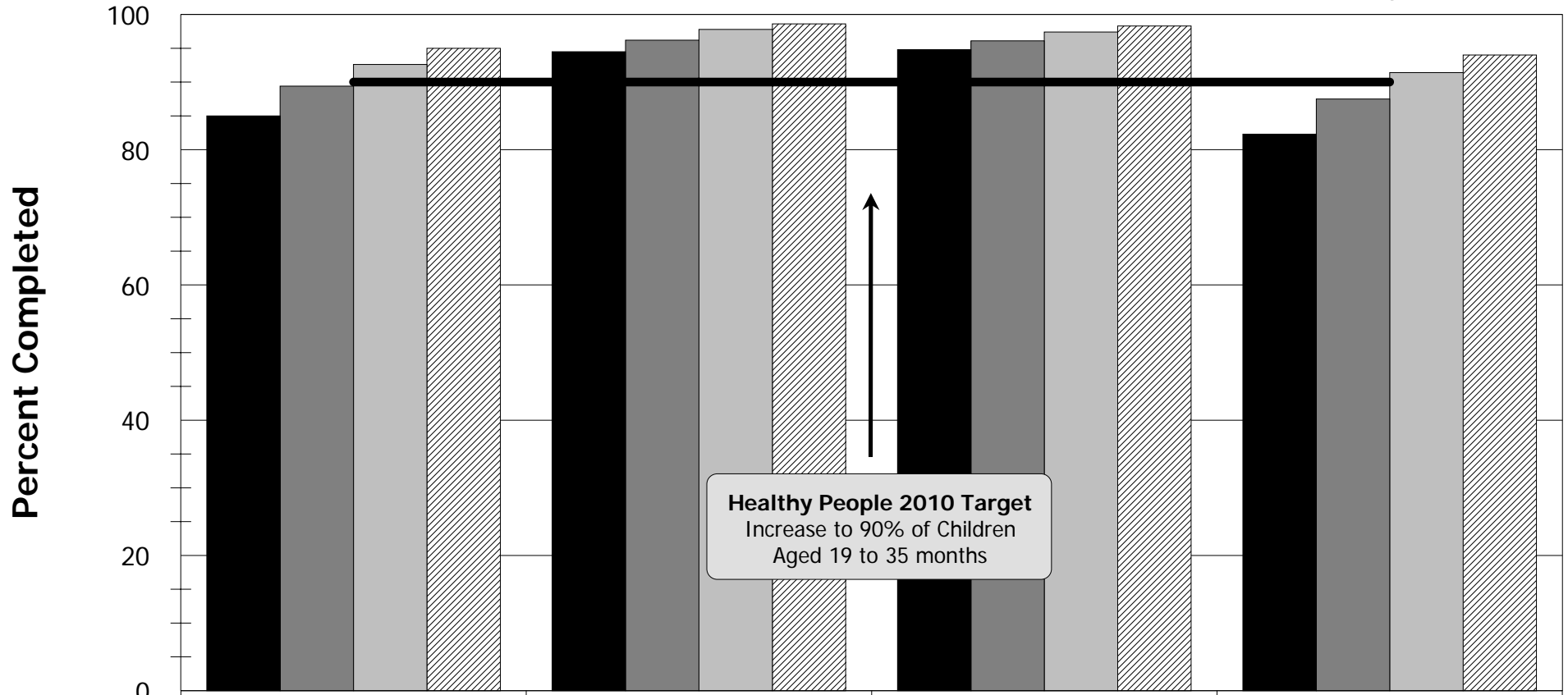
*Complete 4-3-1 series refers to all DTP/DTaP4, OPV/IPV3, and MMR1

Note: Year indicates year of study sample; 1996 and 2002 data unavailable.

Source Data: San Mateo County Immunization Program, Kindergarten Retrospective Surveys

Vaccine Coverage At Ages 24, 27.5, 36 And 48 Months

DTP/DTaP4, OPV/IPV3, MMR1 and Complete 4-3-1 Series*, San Mateo County, 2007



| | DTP/DTaP4 | OPV/IPV3 | MMR1 | 4-3-1 |
|---------------|------------------|-----------------|-------------|--------------|
| 24 Months ■ | 85 | 94.5 | 94.8 | 82.3 |
| 27.5 Months ■ | 89.4 | 96.2 | 96.1 | 87.5 |
| 36 Months ■ | 92.6 | 97.8 | 97.4 | 91.4 |
| 48 Months ▨ | 95 | 98.6 | 98.3 | 94 |

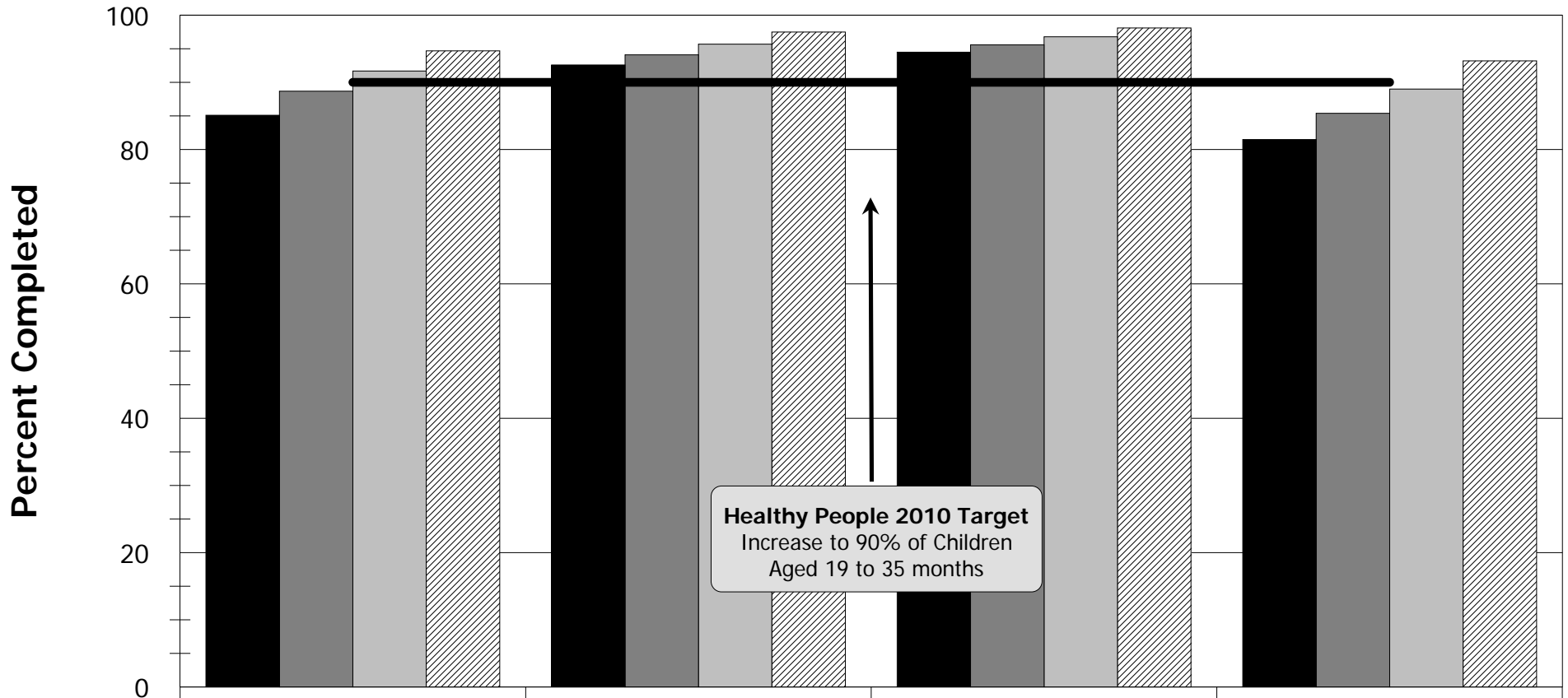
*Complete 4-3-1 series refers to all DTP/DTaP4, OPV/IPV3, and MMR1

Note: Year indicates year of study sample

Source Data: San Mateo County Immunization Program, Kindergarten Retrospective Surveys

Vaccine Coverage At Ages 24, 27.5, 36 And 48 Months

DTP/DTaP4, OPV/IPV3, MMR1 and Complete 4-3-1 Series*, San Mateo County, 2008



Healthy People 2010 Target
Increase to 90% of Children
Aged 19 to 35 months

| | DTP/DTaP4 | OPV/IPV3 | MMR1 | 4-3-1 |
|-------------|------------------|-----------------|-------------|--------------|
| 24 Months | 85.1 | 92.6 | 94.5 | 81.5 |
| 27.5 Months | 88.7 | 94.1 | 95.6 | 85.4 |
| 36 Months | 91.7 | 95.7 | 96.8 | 89 |
| 48 Months | 94.7 | 97.5 | 98.1 | 93.2 |

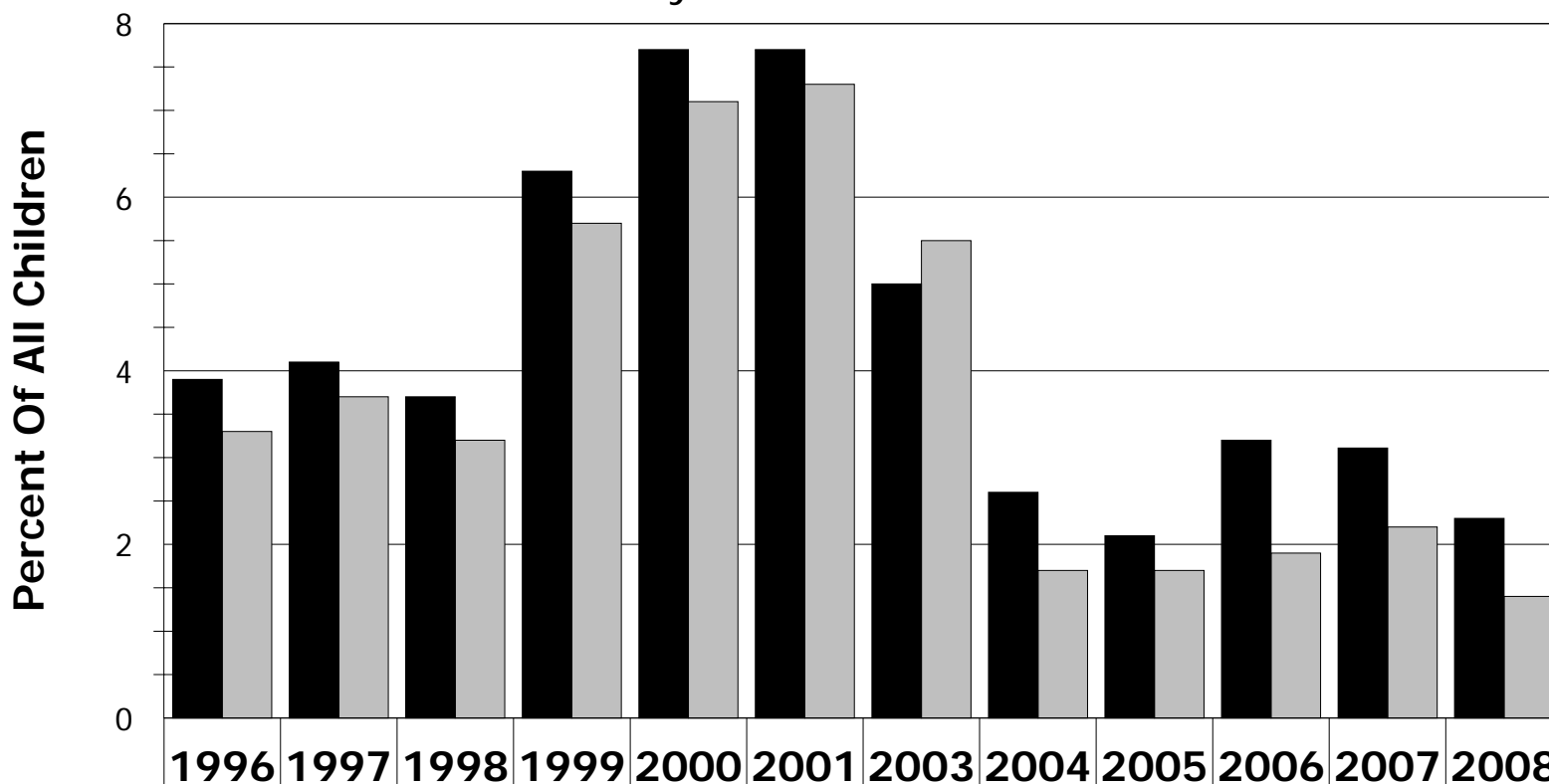
*Complete 4-3-1 series refers to all DTP/DTaP4, OPV/IPV3, and MMR1

Note: Year indicates year of study sample

Source Data: San Mateo County Immunization Program, Kindergarten Retrospective Surveys

Children Receiving Early MMR1

San Mateo County, 1996-2008



| | 1996 | 1997 | 1998 | 1999 | 2000 | 2001 | 2003 | 2004 | 2005 | 2006 | 2007 | 2008 |
|-------------------------------|------|------|------|------|------|------|------|------|------|------|------|------|
| Number Early MMR1 | 75 | 83 | 75 | 103 | 134 | 124 | 88 | 25 | 23 | 38 | 37 | 26 |
| Proportion Early MMR1 | 3.9 | 4.1 | 3.7 | 6.3 | 7.7 | 7.7 | 5 | 2.6 | 2.1 | 3.2 | 3.11 | 2.3 |
| Proportion Excluded* | 3.3 | 3.7 | 3.2 | 5.7 | 7.1 | 7.3 | 5.5 | 1.7 | 1.7 | 1.9 | 2.2 | 1.4 |
| Proportion of MMR1 Replaced** | 2.7 | 21.7 | 17.3 | 15.5 | 17.2 | 12.9 | 8 | 24 | 4.3 | 0.5 | 1.8 | 0.6 |

Early MMR1 refers to MMR1 administered before 12 months of age

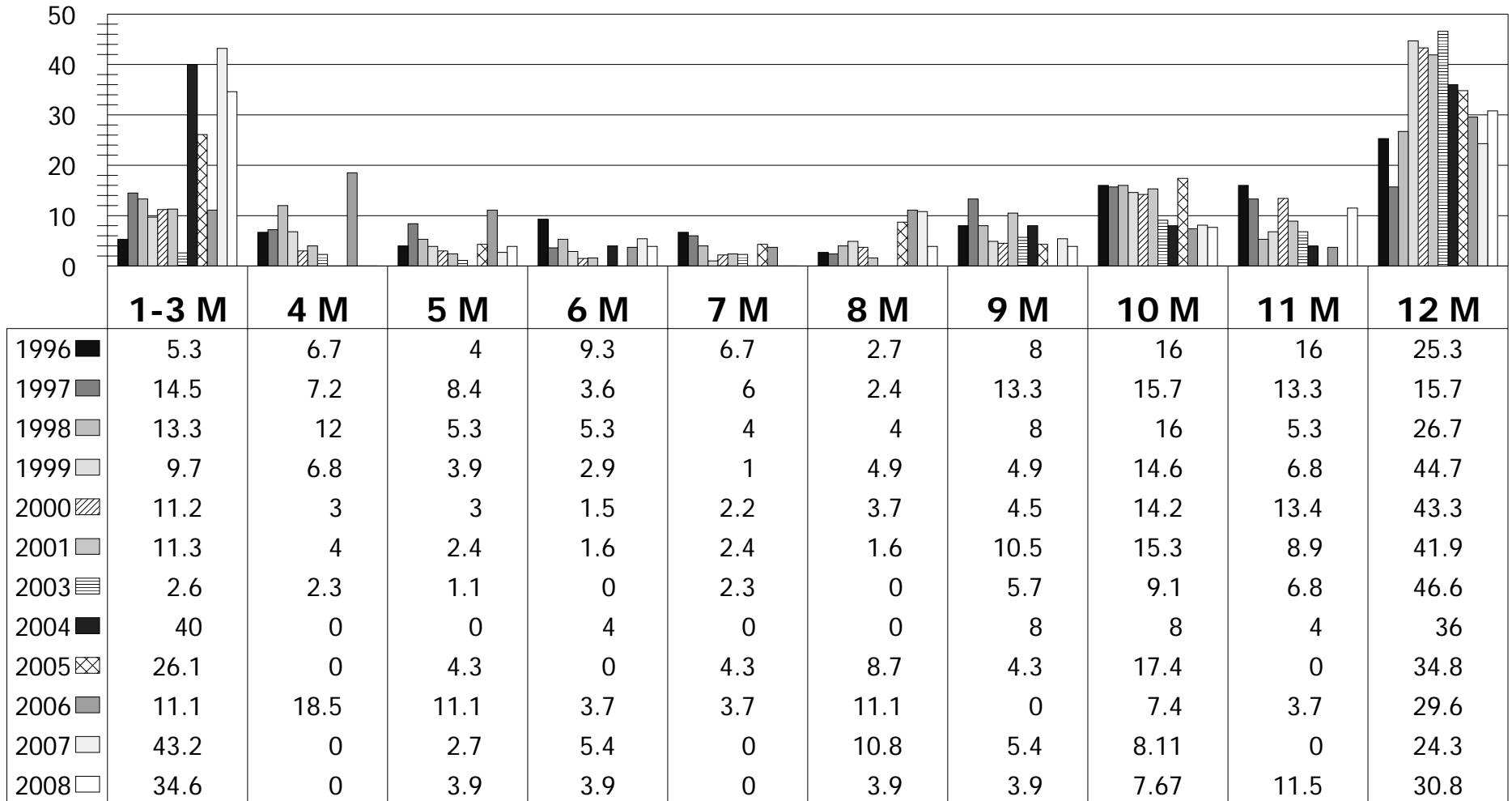
*Proportion of all cases excluded from Series 4-3-1 complete indicator based on receiving early MMR1; cases otherwise up-to-date on DTP4/DTaP4 and OPV/IPV3 at 24 months of age; **Proportion of early MMR1 vaccinations replaced by timely MMR2 for calculation of up-to-date MMR at 24 months of age

Note: Year indicates year of study sample, 2002 data unavailable

Source Data: San Mateo County Immunization Program, Kindergarten Retrospective Surveys

Children Receiving Early MMR1 By Age In Months

San Mateo County, 1996-2008



Early MMR1 refers to MMR1 administered before 12 months of age

Note: Year indicates year of study sample, 2002 data unavailable

Source Data: San Mateo County Immunization Program, Kindergarten Retrospective Surveys