



2024 Mental Health Month



Planning Committee

FEBRUARY 15 3:30PM-5:00PM

This meeting is being **recorded**.



SAN MATEO COUNTY HEALTH

**BEHAVIORAL HEALTH
& RECOVERY SERVICES**

MEDIA NOTICE

This meeting is being recorded.
Slides and recording will be shared
with those on the mailing list.



SAN MATEO COUNTY HEALTH
**BEHAVIORAL HEALTH
& RECOVERY SERVICES**



PHOTO/VIDEO NOTICE

You are approaching an event area where filming and photography are being done. Your entrance into the event area constitutes your full consent to being filmed and photographed by the County of San Mateo. The County of San Mateo reserves the right to use any photography or film taken in the event area without providing compensation to you. Such use by County may include, but is not limited to, postings to social media or websites, and/or use in promotional or informational materials in any medium.

You agree to release and discharge the County of San Mateo, its agents, representatives, assigns, and licensees from all claims, demands, and liabilities arising out of or in connection with the use of your likeness.

Do not enter this event area if you do not wish to be subject to the foregoing. Alternatively, if you wish to participate/attend the event, but do not wish to have your photograph used in accordance with the above notice, please contact an Event Organizer. County will make best efforts to comply with your wish not to be photographed.

Thank you.

We honor and affirm the rights of the Ohlone People and the other Indigenous Peoples who call the unceded territories of the San Francisco Bay Area their traditional homeland.

They represent Tribes, Native American organizations, families, and Indigenous Nations. They are the descendants of the village sites that are seen, and unseen. We pay respect to the Ancestors, Elders, and Relatives of Indigenous Peoples for their historic and current contributions to San Mateo County and we commit to an ongoing effort to bring about healing, inclusivity and deeper collaborative partnerships.



Slide adapted from work by Trauma Transformed (<https://traumatransformed.org/>)
Learn more about SMC BHRS Native Indigenous People's Initiative (NIPI) at smchealth.org/native-and-indigenous-peoples-initiative and African American Community Initiative (AACI) at smchealth.org/bhrs/ode/aaci.



SAN MATEO COUNTY HEALTH
**BEHAVIORAL HEALTH
& RECOVERY SERVICES**



Agenda

1. Welcome & Introduction
2. MHM Introduction
3. Measures of Success
4. Next Steps
5. Announcements & Closing

1. WELCOME & INTRO

In the Chat: Name,
Pronouns, Affiliation(s),
Announcements
Housekeeping: Group
Agreements, Zoom
Participation, Stipend,
Demographic Survey

Cultural Humility Group Agreements

- LISTEN AS IF THE SPEAKER IS WISE; LISTEN TO UNDERSTAND
- PRACTICE “I” STATEMENTS WHEN SPEAKING
- OKAY TO RESPECTFULLY DISAGREE
- TAKE RISKS
- NO PRESSURE TO SPEAK
- BE DISCIPLINED ABOUT NOT MAKING ASSUMPTIONS
- NO BLAMING, NO SHAMING
- CONFIDENTIALITY IF STORIES ARE SHARED
- COURAGE TO INTERRUPT IF SOMETHING IS GOING AMISS OR BEING LEFT UNSAID: MAKE THE INVISIBLE VISIBLE
- VOICES, THOUGHTS, IDEAS, EXPERIENCES WELCOME
- PAY ATTENTION TO WHAT MOVES YOU: USE OOPS AND OUCH

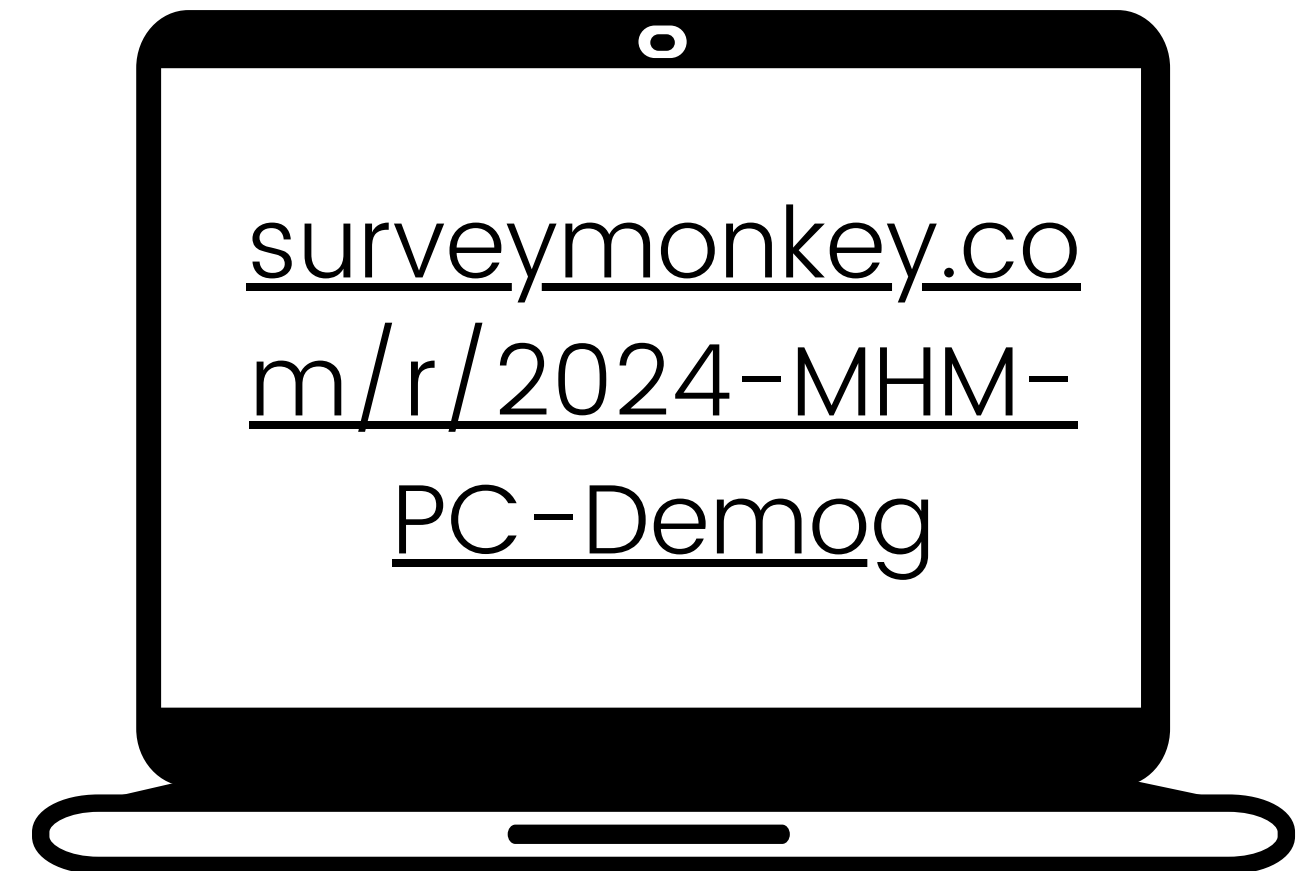
DEMOGRAPHIC SURVEY

Please complete this 6-question survey.



SCAN

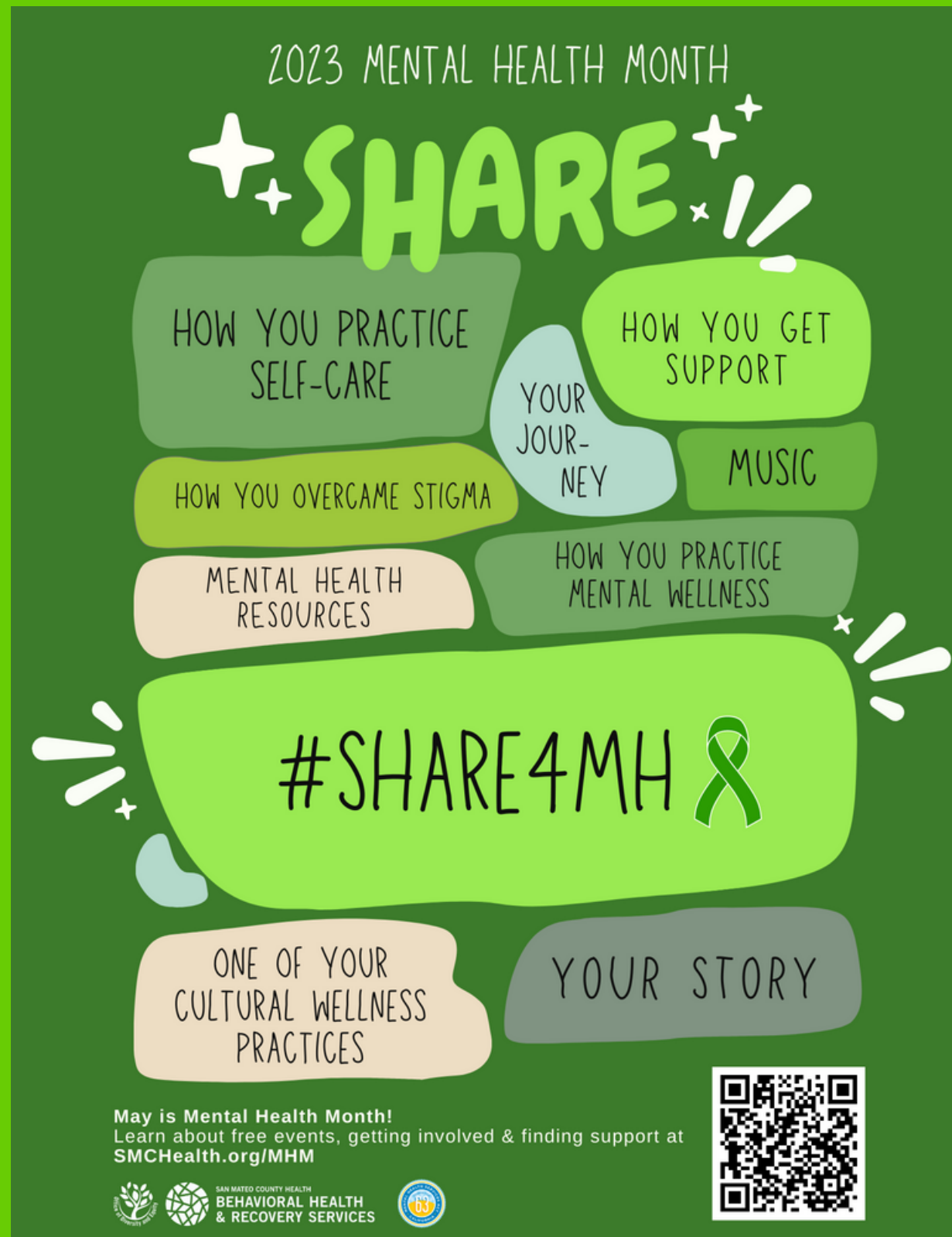
OR



CLICK IN CHAT

Among the six meetings, we ask that you complete this survey once.

Last year's flyer + theme



Mental Health Month (MHM) INTRODUCTION

1. Background/History, Purpose, Target Audience
2. Theme

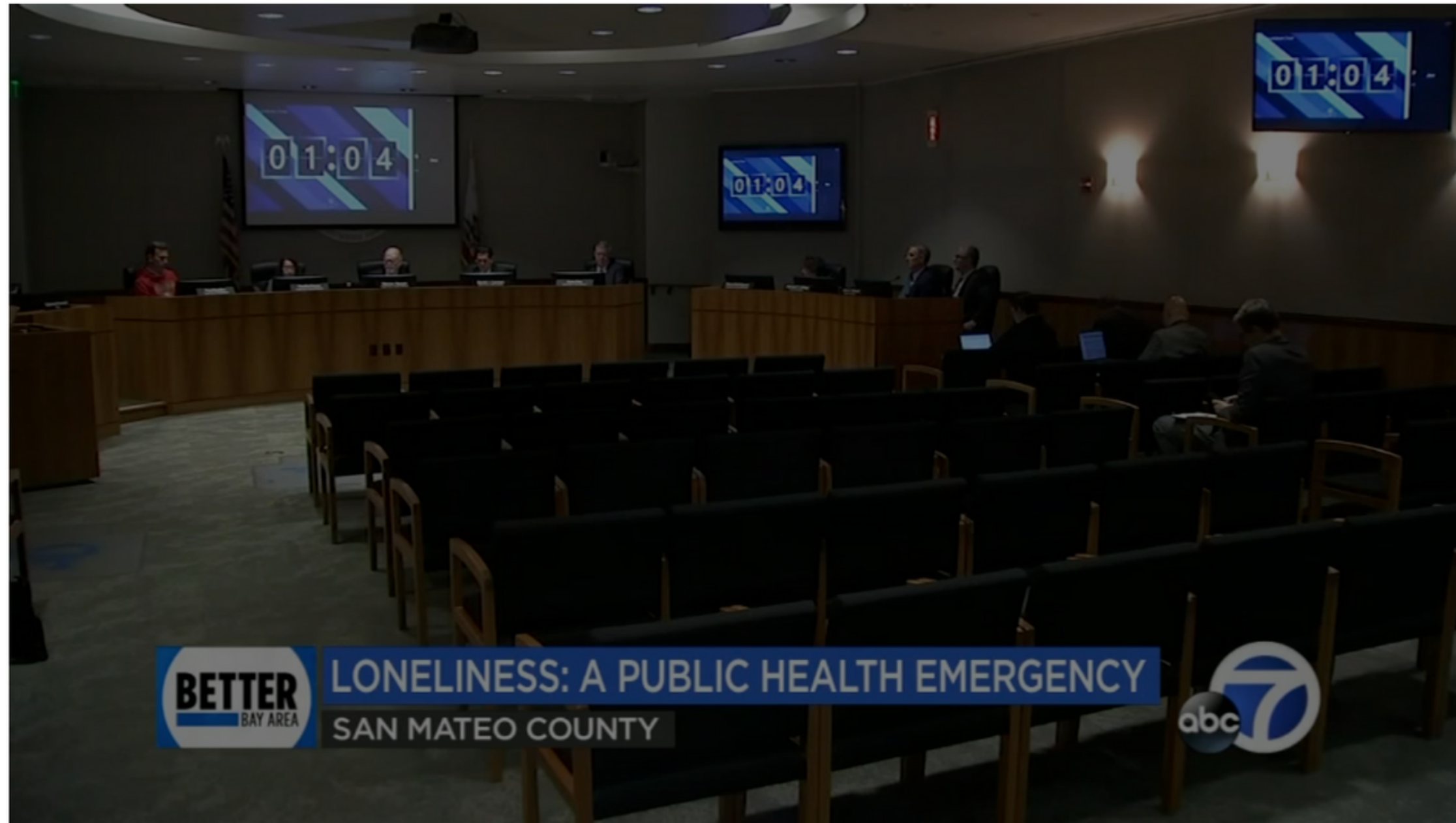


SAN MATEO COUNTY HEALTH
**BEHAVIORAL HEALTH
& RECOVERY SERVICES**

San Mateo County becomes 1st in US to declare loneliness as health emergency

By Tim Johns 

Tuesday, January 30, 2024



With a unanimous vote by the Board of Supervisors, San Mateo County has become the first in U.S. to recognize loneliness as a public health emergency.

ACTIVITIES: ADVOCACY

- Cities – Lights, City Council Proclamations
- County – Lights, Board of Supervisor Proclamation (April 25), Commission Presentation (May 3)



ACTIVITIES: EVENTS

- Mini-Grant
(Questions & Answers)
- Diverse Communities
(Brainstorm)
- Collaboration
(Discussion)



MINI-GRANT

Questions & Answers



SCAN

OR



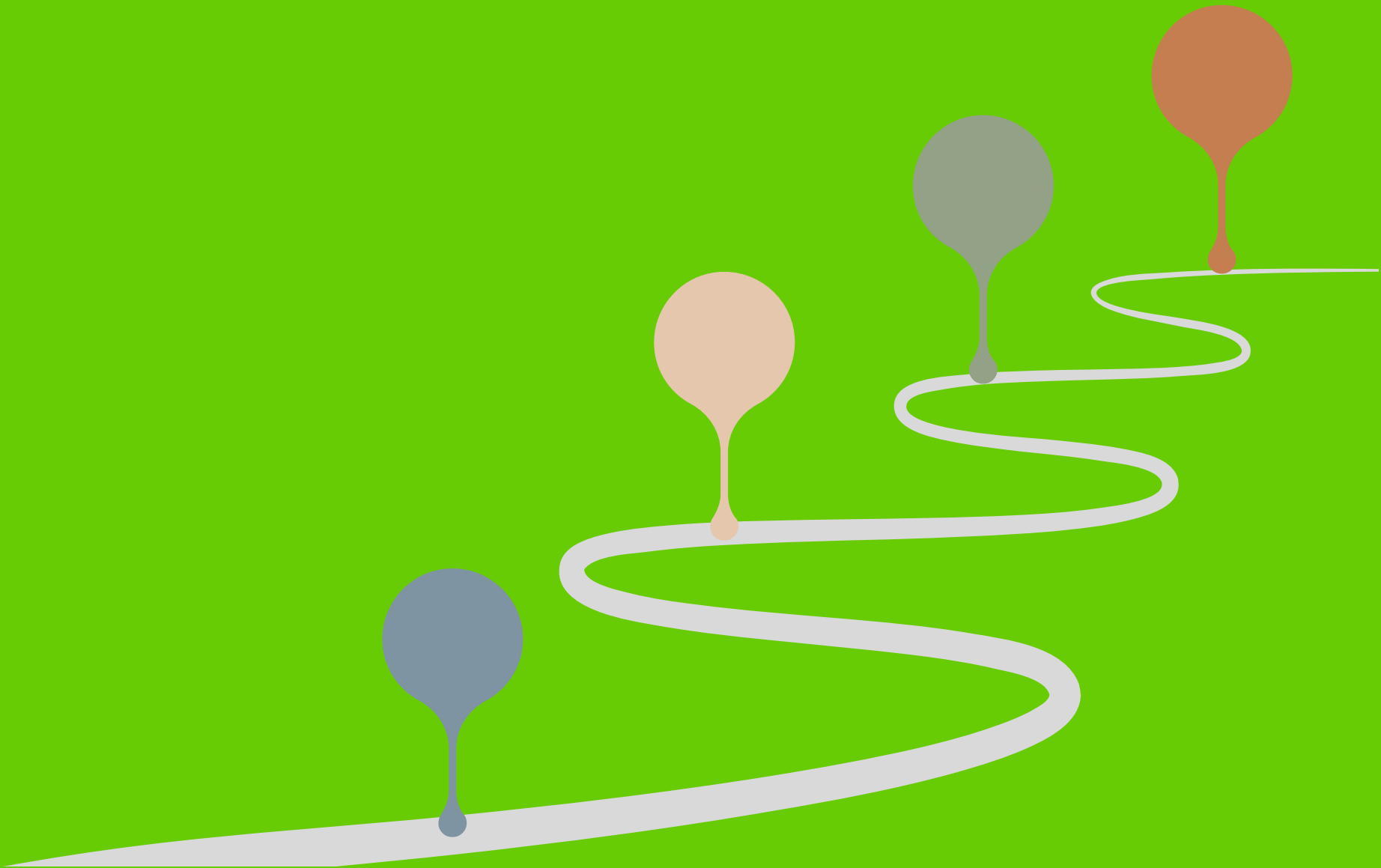
CLICK IN CHAT

For programs that receive funding through SMC BHRS Office of Diversity and Equity, please request funds through your usual budget request process.

COMMITTEE MEMBER ROLES



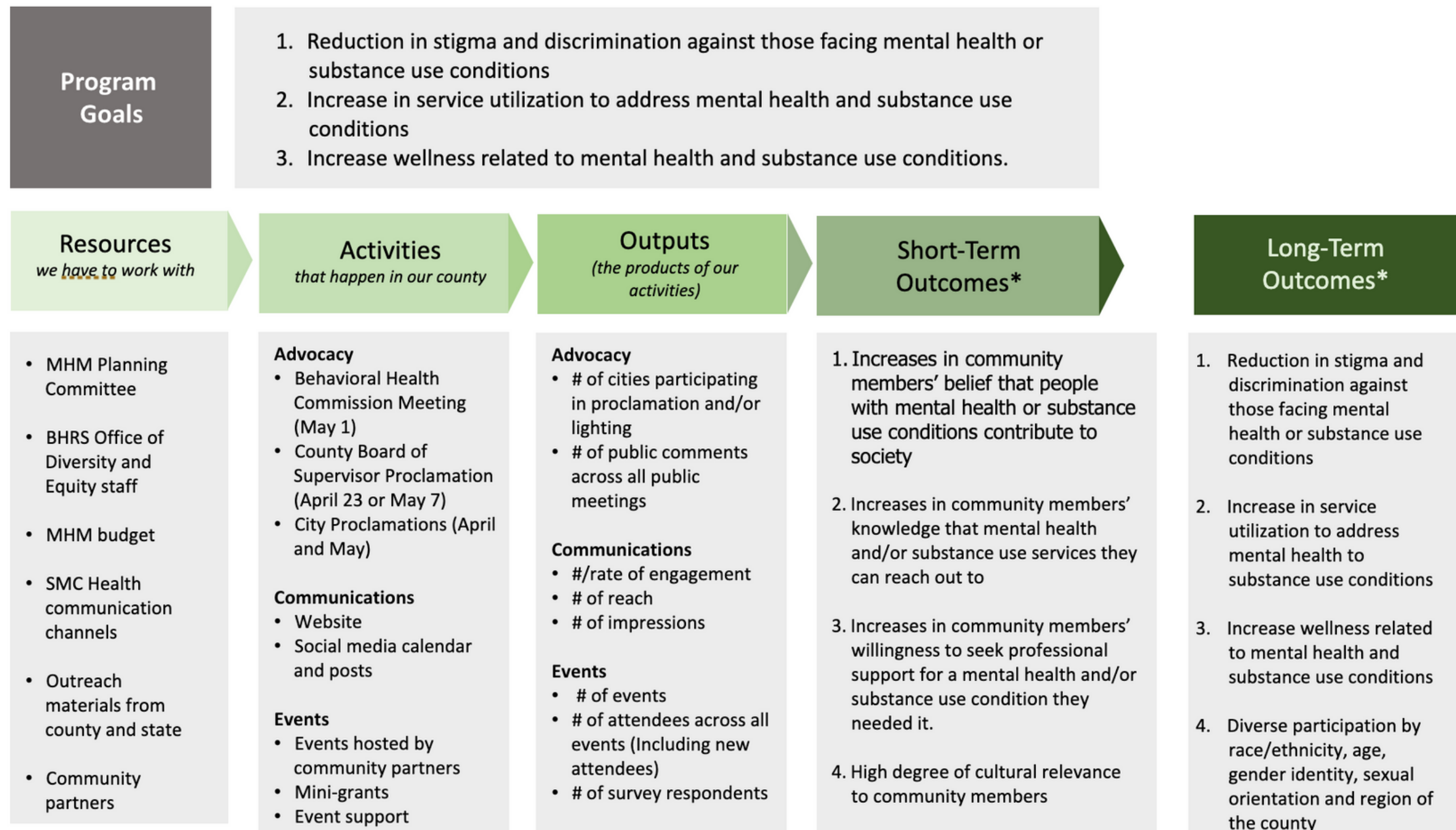
TIMELINE



3. MHM MEASURES OF SUCCESS



Logic Model for San Mateo County Mental Health Month (MHM)





SAN MATEO COUNTY HEALTH

**BEHAVIORAL HEALTH
& RECOVERY SERVICES**

4. NEXT STEPS

1. Identify personal next step to accomplish by next meeting
2. Apply or share mini-grant
3. Invite others to upcoming meeting



SAN MATEO COUNTY HEALTH
BEHAVIORAL HEALTH
& RECOVERY SERVICES

2024 MAY MENTAL HEALTH MONTH PLANNING COMMITTEE

THURSDAYS 3:30-5:00 PM
VIA ZOOM - EXCEPT FOR APRIL 18TH

OPEN TO PUBLIC



Stipends available for behavioral health clients or family members.

Language interpretation available. Request at least one week before each meeting.



Info & registration at
SMCHealth.org/MHM

February 15	Intro & Measures of Success
March 7	Events & Advocacy
March 28	Communication & Outreach
April 18 In-person meeting at 310 Harbor Blvd, Building E, Belmont	Group Photo & Outreach Materials
June 6	Debrief & Appreciation

5. ANNOUNCEMENTS

Next Meeting
Thursday, March 7th
3:30-5:00pm
Zoom (Registration Required)

Please invite others!

Resources



SAN MATEO COUNTY HEALTH

**BEHAVIORAL HEALTH
& RECOVERY SERVICES**

CRISIS 24/7 RESOURCES

Call 650-579-0350 or 988

Star Vista Crisis Center or National
Crisis and Suicide

Text "BAY" to 741741 or 988

Crisis Text Line or National Crisis and
Suicide Lifeline

sanmateocrisis.org/crisiscenter

NON-CRISIS RESOURCES

NAMI SMC Warmline

650-638-0802

Heart & Soul Peer-Run Warm Line

650-231-2024

smchealth.org/bhrsservices

takeaction4mh.com



SAN MATEO COUNTY HEALTH

**BEHAVIORAL HEALTH
& RECOVERY SERVICES**

Questions?



SAN MATEO COUNTY HEALTH

BEHAVIORAL HEALTH & RECOVERY SERVICES



www.smchealth.org/mhm



Kristie Lui | She/Her/她

kflui@smcgov.org

Sylvia Tang | She/Her/她

stang@smcgov.org | 650-208-5799