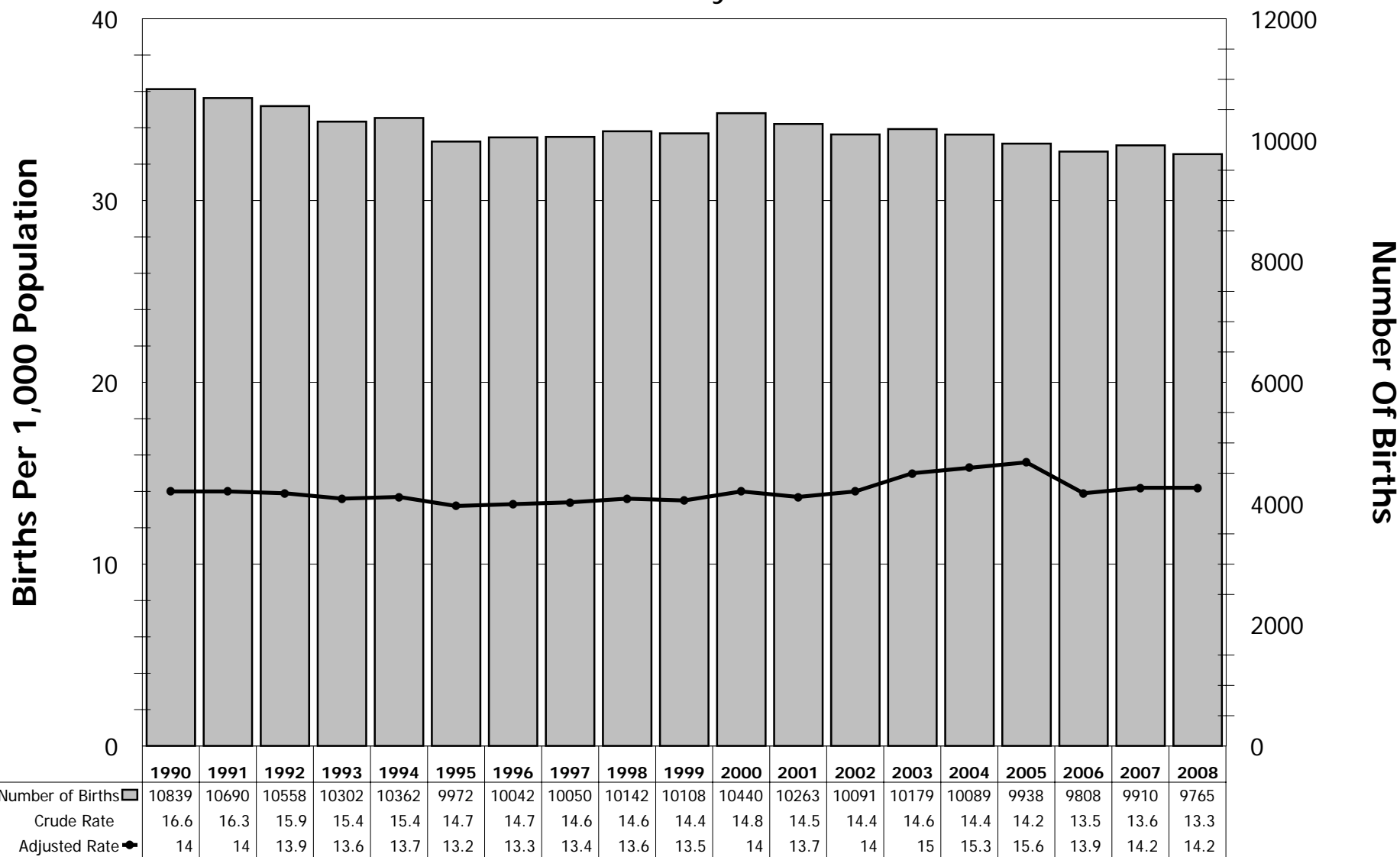


Number Of Births And Birth Rate

San Mateo County, 1990-2008



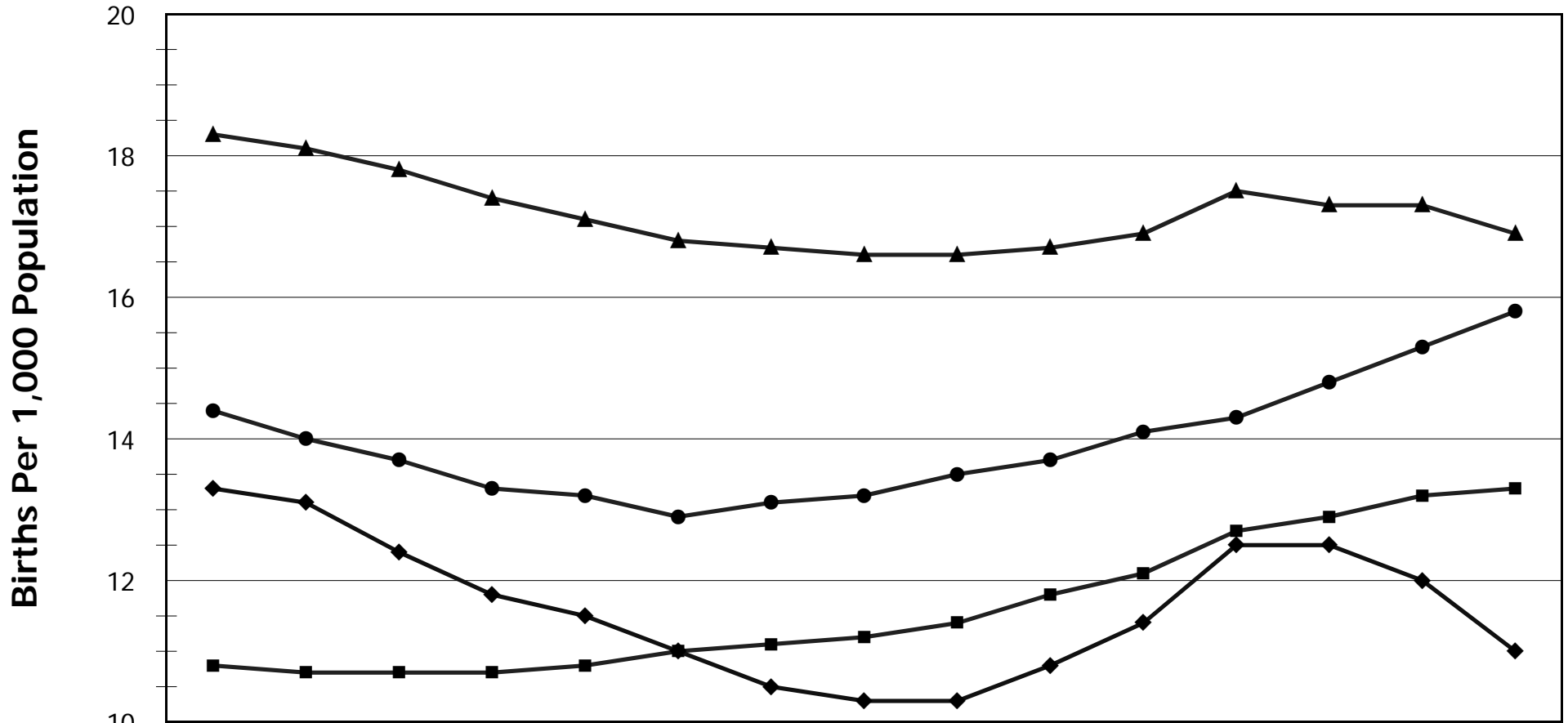
Adjusted rate is age-adjusted and standardized to Year 2000 population

Note: Observed decline in age-adjusted rate from 2005 to 2006 caused by sharp decline in 25-34 year old population.

Source Data: California Department of Health Services, Center for Health Statistics, Birth Records 1990-2008

Race Specific Birth Rate

5- Year Moving Average Rate, San Mateo County, 1990-2008



	1990-94	1991-95	1992-96	1993-97	1994-98	1995-99	1996-00	1997-01	1998-02	1999-03	2000-04	2001-05	2002-06	2003-07	2004-08
All Races	13.8	13.7	13.5	13.4	13.4	13.4	13.6	13.6	13.8	14.1	14.5	14.8	14.8	14.8	14.6
Asian ●	14.4	14	13.7	13.3	13.2	12.9	13.1	13.2	13.5	13.7	14.1	14.3	14.8	15.3	15.8
Black ◆	13.3	13.1	12.4	11.8	11.5	11	10.5	10.3	10.3	10.8	11.4	12.5	12.5	12	11
Hispanic ▲	18.3	18.1	17.8	17.4	17.1	16.8	16.7	16.6	16.6	16.7	16.9	17.5	17.3	17.3	16.9
White ■	10.8	10.7	10.7	10.7	10.8	11	11.1	11.2	11.4	11.8	12.1	12.7	12.9	13.2	13.3

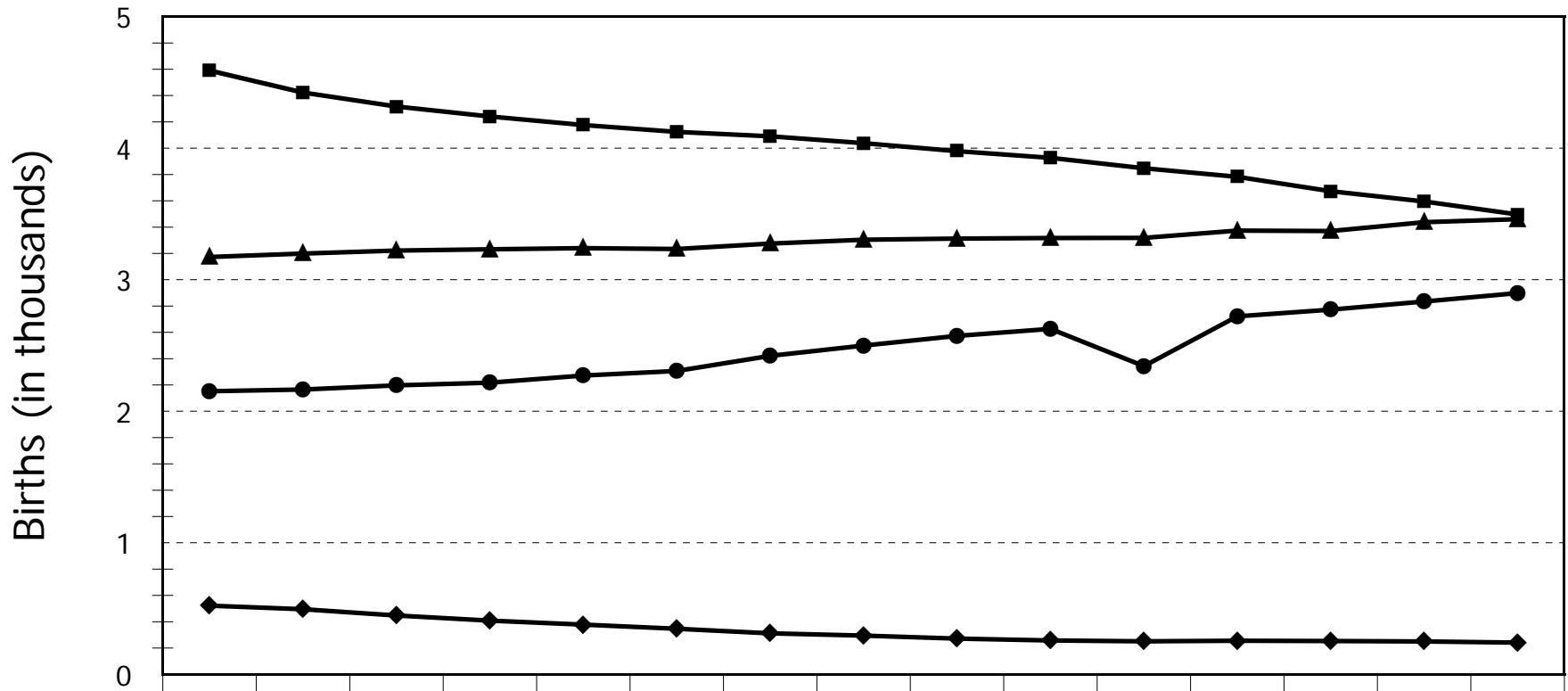
Legend: Asian=circle; Black=diamond; Hispanic=triangle; White=quare; All Races trend line not displayed within graph.

Rates are age-adjusted and standardized to Year 2000 population

Source Data: California Department of Health Services, Center for Health Statistics, Birth Records 1990-2008

Race Specific Births

5 Year Moving Averages, San Mateo County, 1990-2008



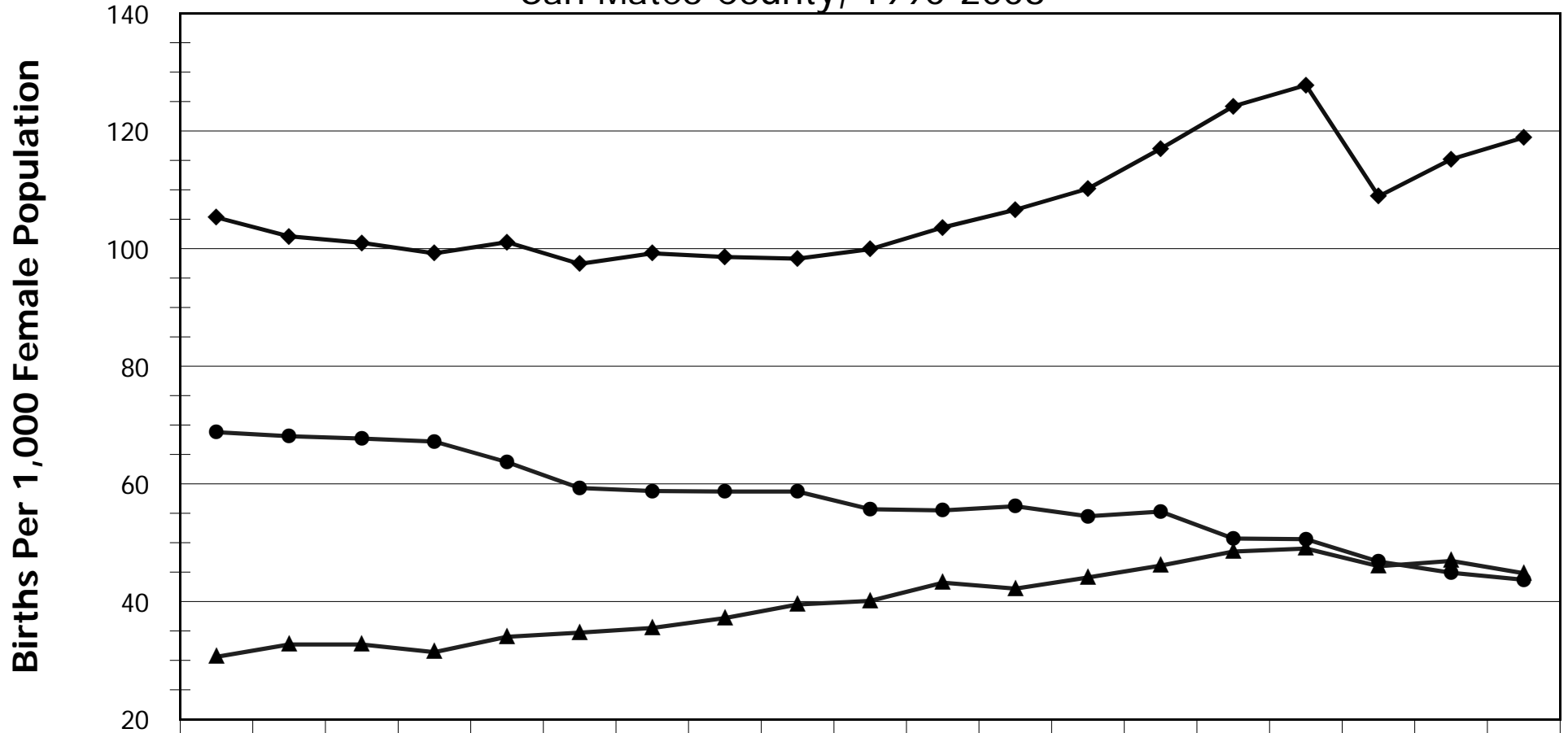
	1990-94	1991-95	1992-96	1993-97	1994-98	1995-99	1996-00	1997-01	1998-02	1999-03	2000-04	2001-05	2002-06	2003-07	2004-08
All Races	10.55	10.377	10.247	10.146	10.114	10.063	10.156	10.201	10.209	10.216	10.212	10.112	10.021	9.985	9.902
Asian ●	2.152	2.165	2.197	2.217	2.272	2.306	2.421	2.499	2.573	2.626	2.343	2.722	2.773	2.835	2.899
Black ◆	0.522	0.495	0.447	0.408	0.378	0.347	0.312	0.295	0.272	0.258	0.251	0.255	0.253	0.25	0.242
Hispanic ▲	3.173	3.199	3.222	3.232	3.24	3.234	3.275	3.304	3.313	3.317	3.318	3.374	3.37	3.438	3.46
White ■	4.591	4.423	4.317	4.241	4.176	4.124	4.091	4.038	3.978	3.927	3.847	3.782	3.673	3.595	3.496

Legend: Asian=circle; Black=diamond; Hispanic=triangle; White=square; All Races trend line not displayed within graph.

Source Data: California Department of Health Services, Center for Health Statistics, Birth Records 1990-2008

Age Specific Birth Rates

San Mateo County, 1990-2008



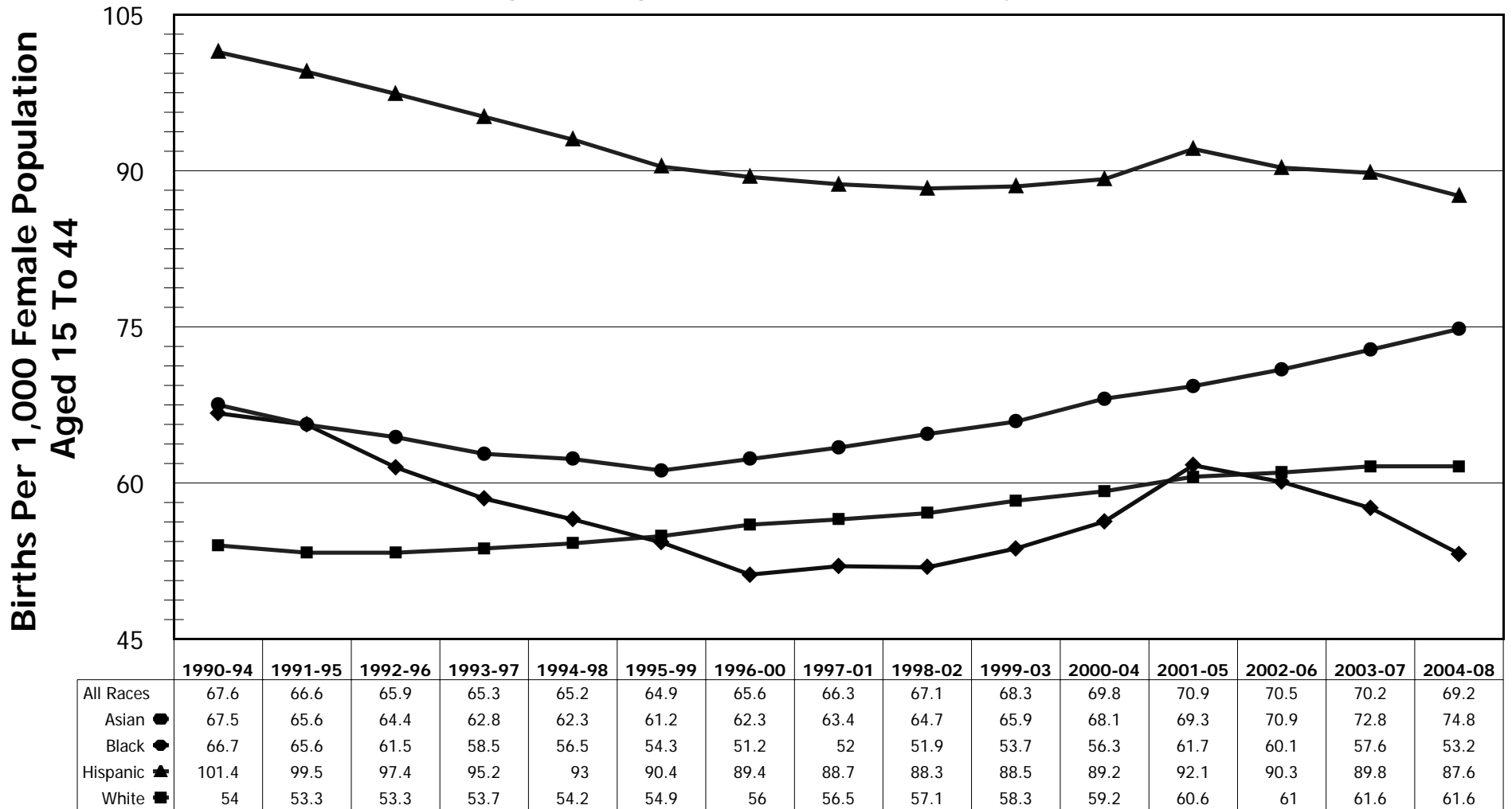
	1990	1991	1992	1993	1994	1995	1996	1997	1998	1999	2000	2001	2002	2003	2004	2005	2006	2007	2008
10-14 years	0.74	1.01	1.1	0.8	1.16	1.18	0.66	0.3	0.78	0.57	0.23	0.41	0.14	0.09	0.27	0.32	0.52	0.24	0.24
15-24 years	68.8	68.1	67.7	67.2	63.7	59.3	58.8	58.7	58.7	55.7	55.5	56.2	54.5	55.3	50.7	50.6	46.8	44.9	43.7
25-34 years	105.3	102.1	101	99.2	101.1	97.4	99.2	98.58	98.3	99.9	103.6	106.6	110.2	117	124.2	127.8	108.9	115.2	118.9
35-44 years	30.6	32.7	32.7	31.4	34	34.7	35.5	37.2	39.5	40.1	43.2	42.2	44.1	46.1	48.5	49	46	46.9	44.8
45-54 years	0.05	0.38	0.25	0.43	0.23	0.38	0.28	0.35	0.42	0.57	0.53	0.48	0.7	0.68	0.57	0.64	0.77	0.72	0.84

Rates for age groups 10-14 and 45-54 not shown on graph

Source Data: California Department of Health Services, Center for Health Statistics, Birth Records 1990-2008

Race/Ethnicity Specific Fertility Rates

5- Year Moving Averages, San Mateo County, 1990-2008



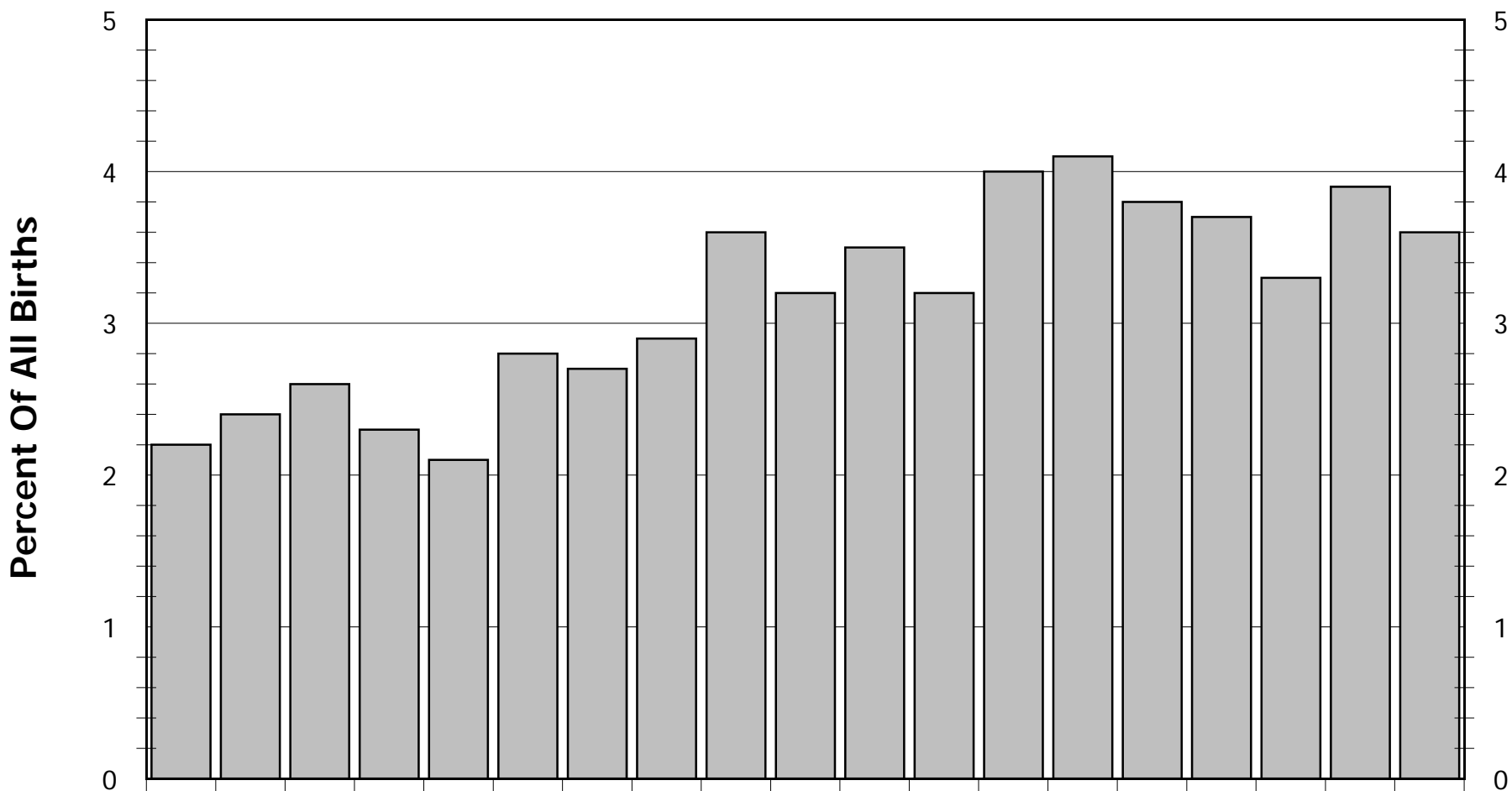
Rates are unadjusted

General fertility applies to births among women 15 to 44 years of age

Source Data: California Department of Health Services, Center for Health Statistics, Birth Records 1990-2008

Frequency Of Multiple Births

San Mateo County, 1990-2008



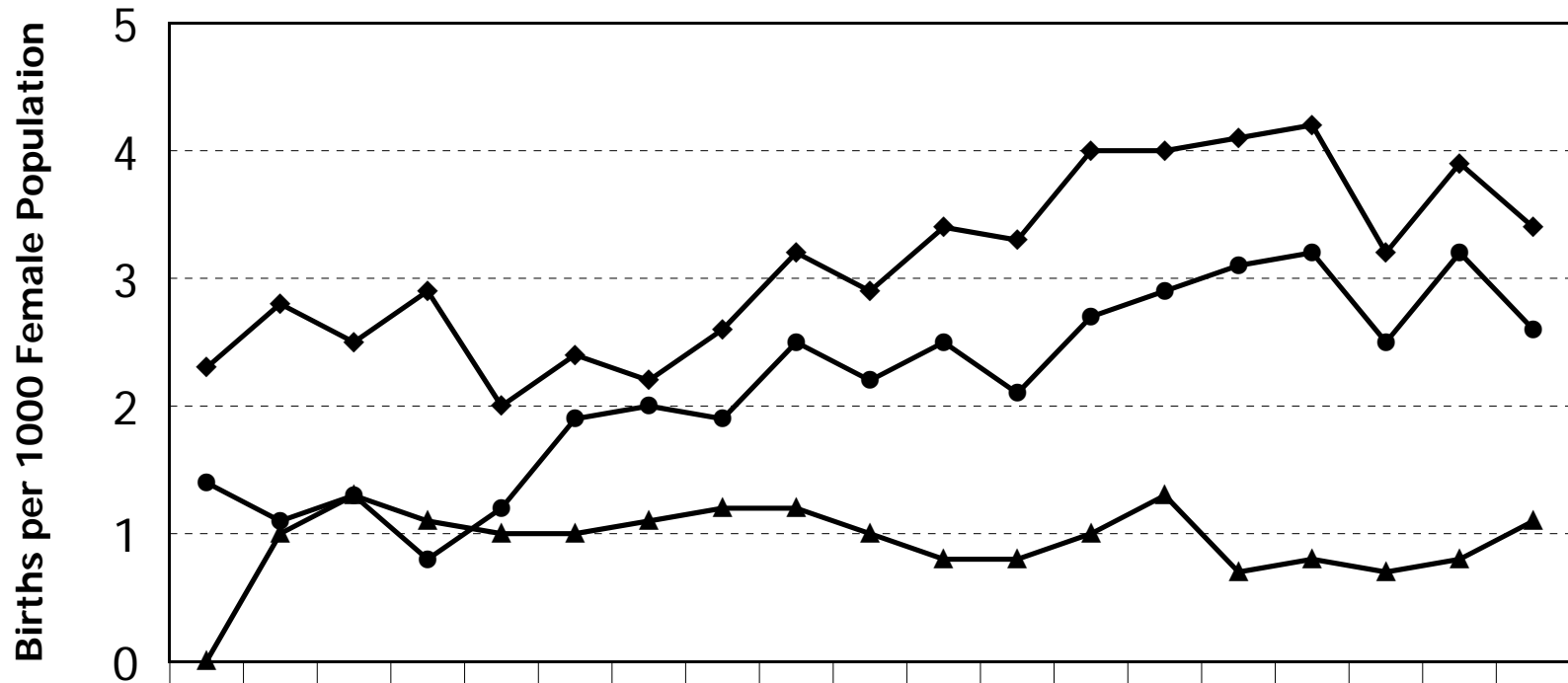
	1990	1991	1992	1993	1994	1995	1996	1997	1998	1999	2000	2001	2002	2003	2004	2005	2006	2007	2008
Number Twin Births	235	260	272	233	220	278	275	292	367	327	363	333	405	419	383	393	354	415	377
Percent Twin Births	2.2	2.4	2.6	2.3	2.1	2.8	2.7	2.9	3.6	3.2	3.5	3.2	4	4.1	3.8	3.7	3.3	3.9	3.6
Percent 3+ Births	0.14	0.07	0.06	0.24	0.1	0.14	0.15	0.19	0.15	0.15	0.06	0.03	0.03	0.06	0.12	0.15	0.08	0.14	0.14
Percent Single Births	97.7	97.5	97.4	97.5	97.8	97.1	97.1	96.1	96.2	96.6	96.5	96.7	96	95.8	96.1	96.2	96.6	96	96.3

Rates are unadjusted

Source Data: California Department of Health Services, Center for Health Statistics, Birth Records 1990-2008

Age Specific Multiple Birth Rates

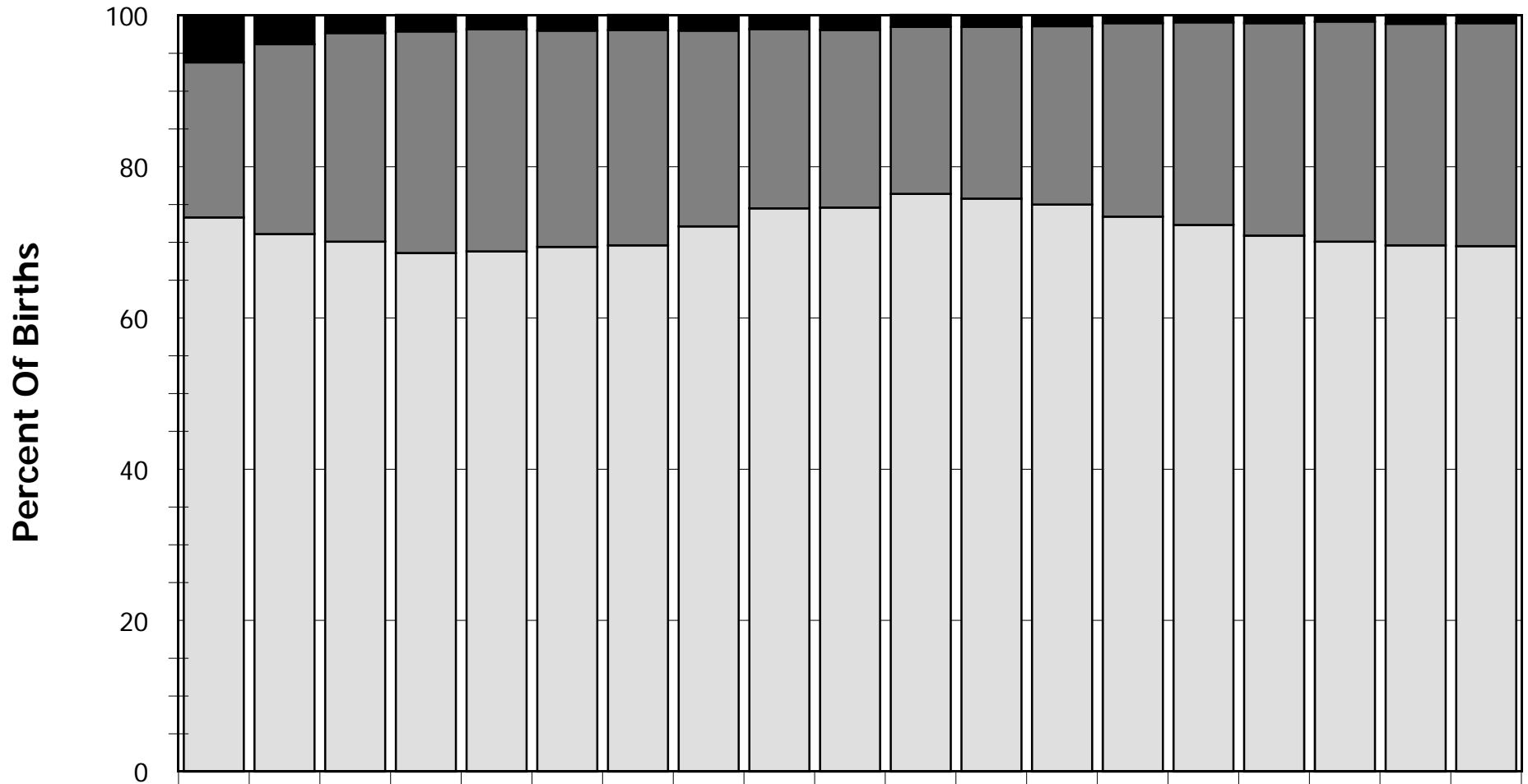
San Mateo County, 1990-2008



	1990	1991	1992	1993	1994	1995	1996	1997	1998	1999	2000	2001	2002	2003	2004	2005	2006	2007	2008
15 to 24 Multiples▲	0	1	1.3	1.1	1	1	1.1	1.2	1.2	1	0.8	0.8	1	1.3	0.7	0.8	0.7	0.8	1.1
25 to 34 Multiples◆	2.3	2.8	2.5	2.9	2	2.4	2.2	2.6	3.2	2.9	3.4	3.3	4	4	4.1	4.2	3.2	3.9	3.4
35 to 44 Multiples●	1.4	1.1	1.3	0.8	1.2	1.9	2	1.9	2.5	2.2	2.5	2.1	2.7	2.9	3.1	3.2	2.5	3.2	2.6
25 to 34 Twins■	2.2	2.7	2.5	2.6	1.9	2.3	2.2	2.5	3.1	2.7	3.4	3.2	4	4	4.1	4.1	3.2	3.7	3.3
35 to 44 Twins▲	1.2	1	1.3	0.6	1.1	1.7	1.8	1.8	2.4	2.2	2.4	2.1	2.6	2.9	2.9	3	2.4	3.1	2.5

Births By Principal Source Of Payment For Delivery

San Mateo County, 1990-2008

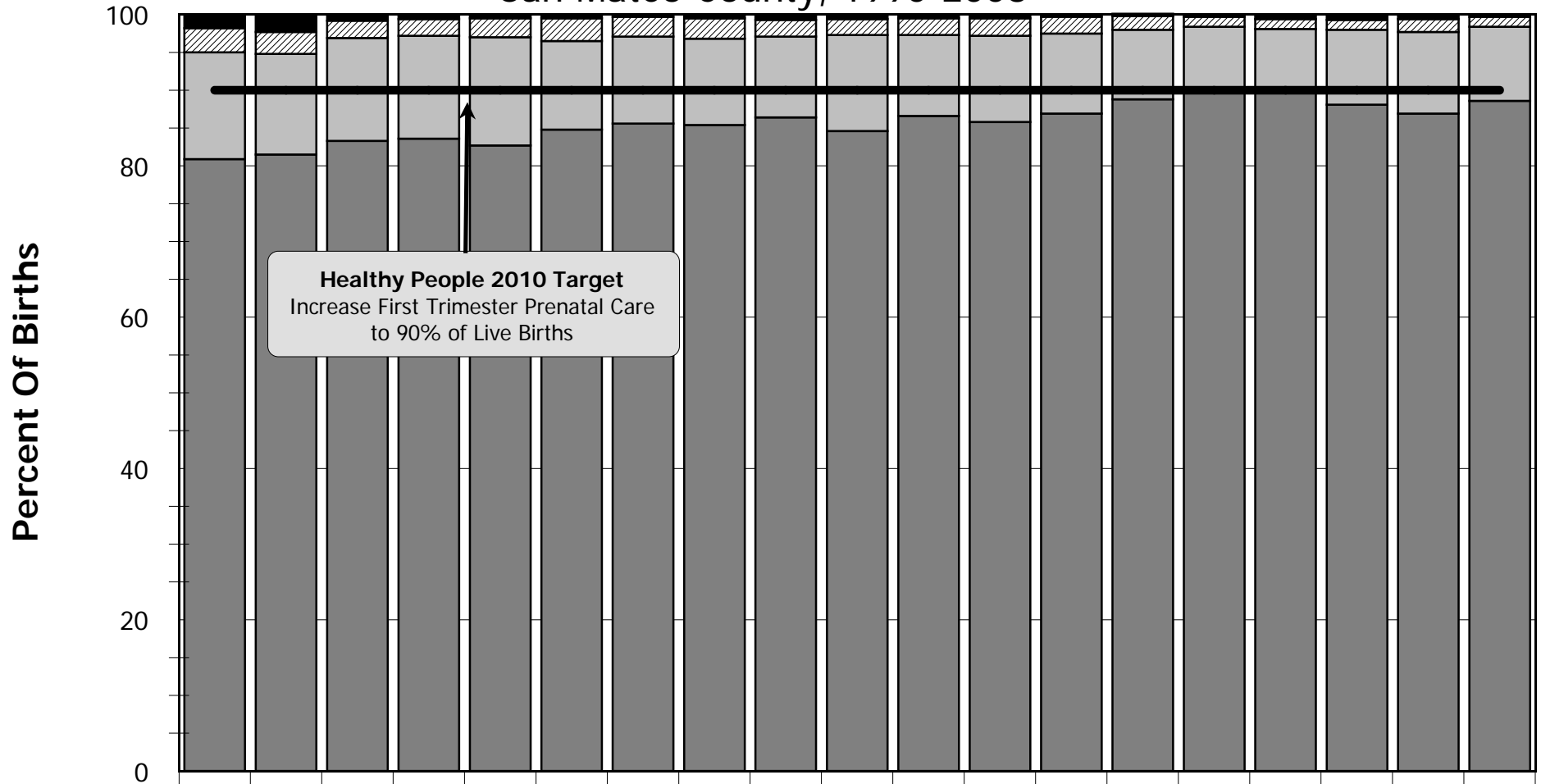


	1990	1991	1992	1993	1994	1995	1996	1997	1998	1999	2000	2001	2002	2003	2004	2005	2006	2007	2008
Self-Pay/Other	6.2	3.8	2.3	2.2	1.8	2	2	2	1.8	1.9	1.6	1.5	1.3	1	0.9	1	0.7	1.2	1.1
Medi-Cal	20.5	25.1	27.6	29.3	29.4	28.6	28.5	25.9	23.7	23.5	22.1	22.7	23.6	25.6	26.8	28.1	29.1	29.3	29.5
Prepaid Plan/Private	73.3	71.1	70.1	68.6	68.8	69.4	69.6	72.1	74.5	74.6	76.4	75.8	75	73.4	72.3	70.9	70.1	69.6	69.5

Prepaid plan includes health maintenance organizations and Blue Cross/Blue Shield; Other includes Medicare, worker's compensation, Title V (MCH funds), other governmental programs, no charge, other non-governmental programs, medically indigent, and unknown
 Source Data: California Department of Health Services, Center for Health Statistics, Birth Records 1990-2008

Proportion Of Births By Trimester Of First Prenatal Care Visit

San Mateo County, 1990-2008



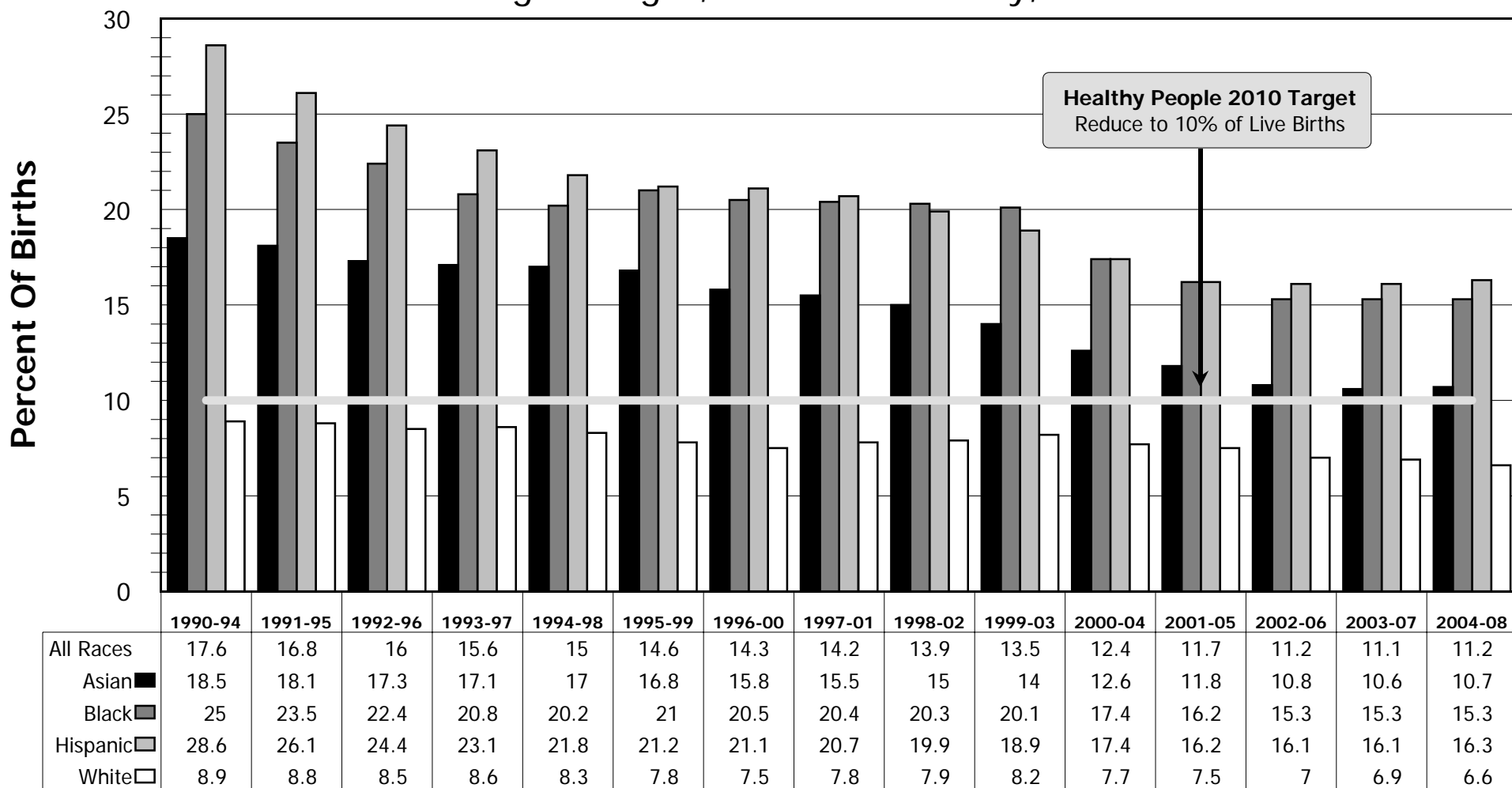
Healthy People 2010 Target
 Increase First Trimester Prenatal Care
 to 90% of Live Births

	1990	1991	1992	1993	1994	1995	1996	1997	1998	1999	2000	2001	2002	2003	2004	2005	2006	2007	2008
No Prenatal Care	1.8	2.2	0.8	0.5	0.5	0.5	0.3	0.5	0.7	0.5	0.5	0.5	0.3	0.3	0.3	0.4	0.5	0.6	0.3
3rd Trimester	3.2	2.9	2.3	2.2	2.5	3	2.6	2.7	2.2	2.1	2.2	2.3	2.2	1.8	1.3	1.3	1.3	1.7	1.3
2nd Trimester	14.1	13.3	13.6	13.6	14.3	11.7	11.5	11.4	10.7	12.7	10.7	11.4	10.6	9.2	8.3	8.4	9.9	10.8	9.8
1st Trimester	80.9	81.5	83.3	83.6	82.7	84.8	85.6	85.4	86.4	84.6	86.6	85.8	86.9	88.8	90.1	89.7	88.1	86.9	88.6

Source Data: California Department of Health Services, Center for Health Statistics, Birth Records 1990-2008

Proportion Of Births With Late Or No Prenatal Care By Maternal Race/Ethnicity

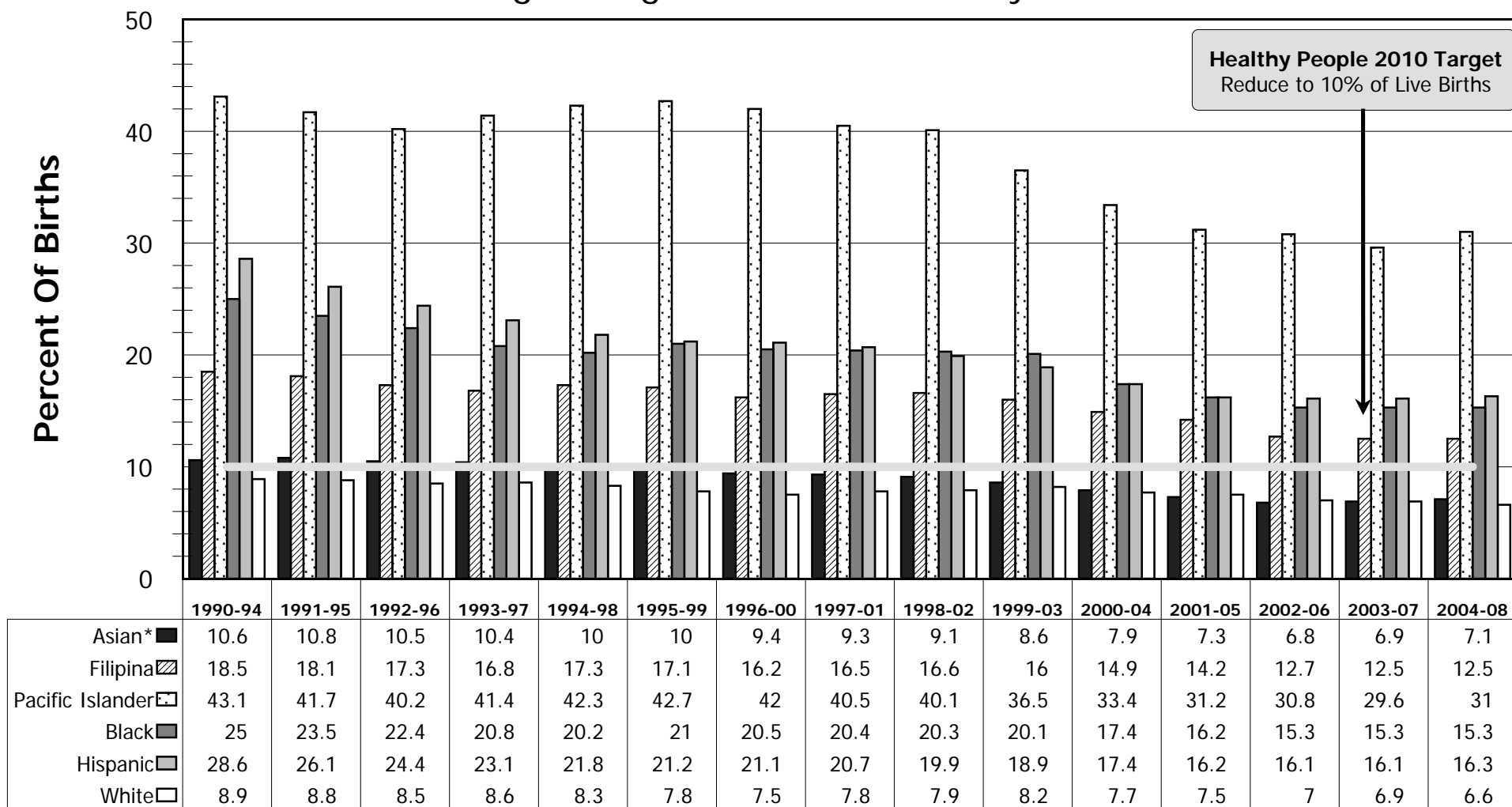
5-Year Moving Averages, San Mateo County, 1990-2008



Late prenatal care defined as first prenatal care visit occurring during the second or third trimester of pregnancy
 Source Data: California Department of Health Services, Center for Health Statistics, Birth Records 1990-2008

Proportion Of Births Receiving Late Or No Prenatal Care By Maternal Race/Ethnicity

5-Year Moving Averages, San Mateo County, 1990-2008



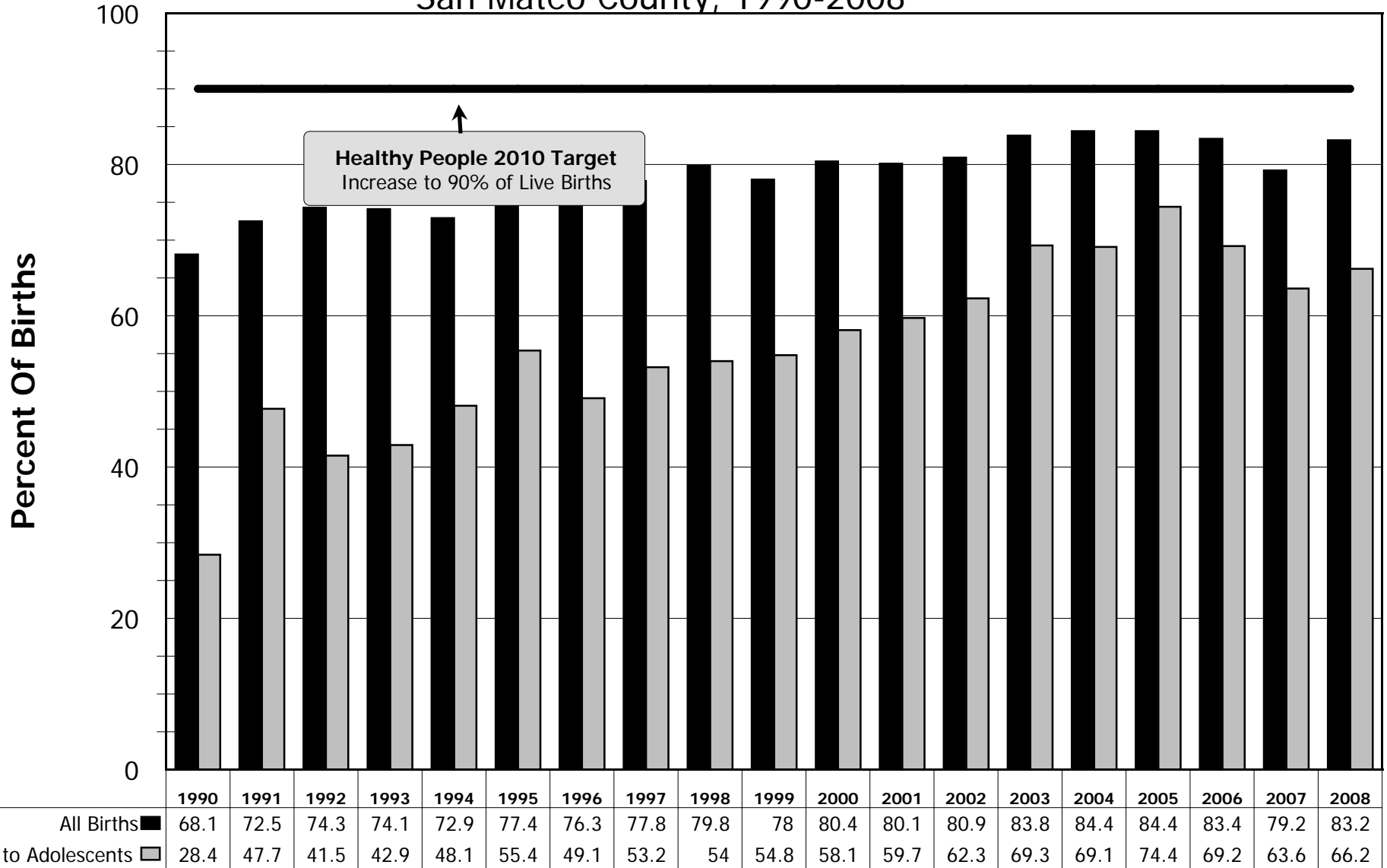
*Non Filipina/Pacific Islander Asians

Late prenatal care defined as first prenatal care visit occurring during the second or third trimester of pregnancy

Source Data: California Department of Health Services, Center for Health Statistics, Birth Records 1990-2008

Proportion Of Births With Adequate Prenatal Care

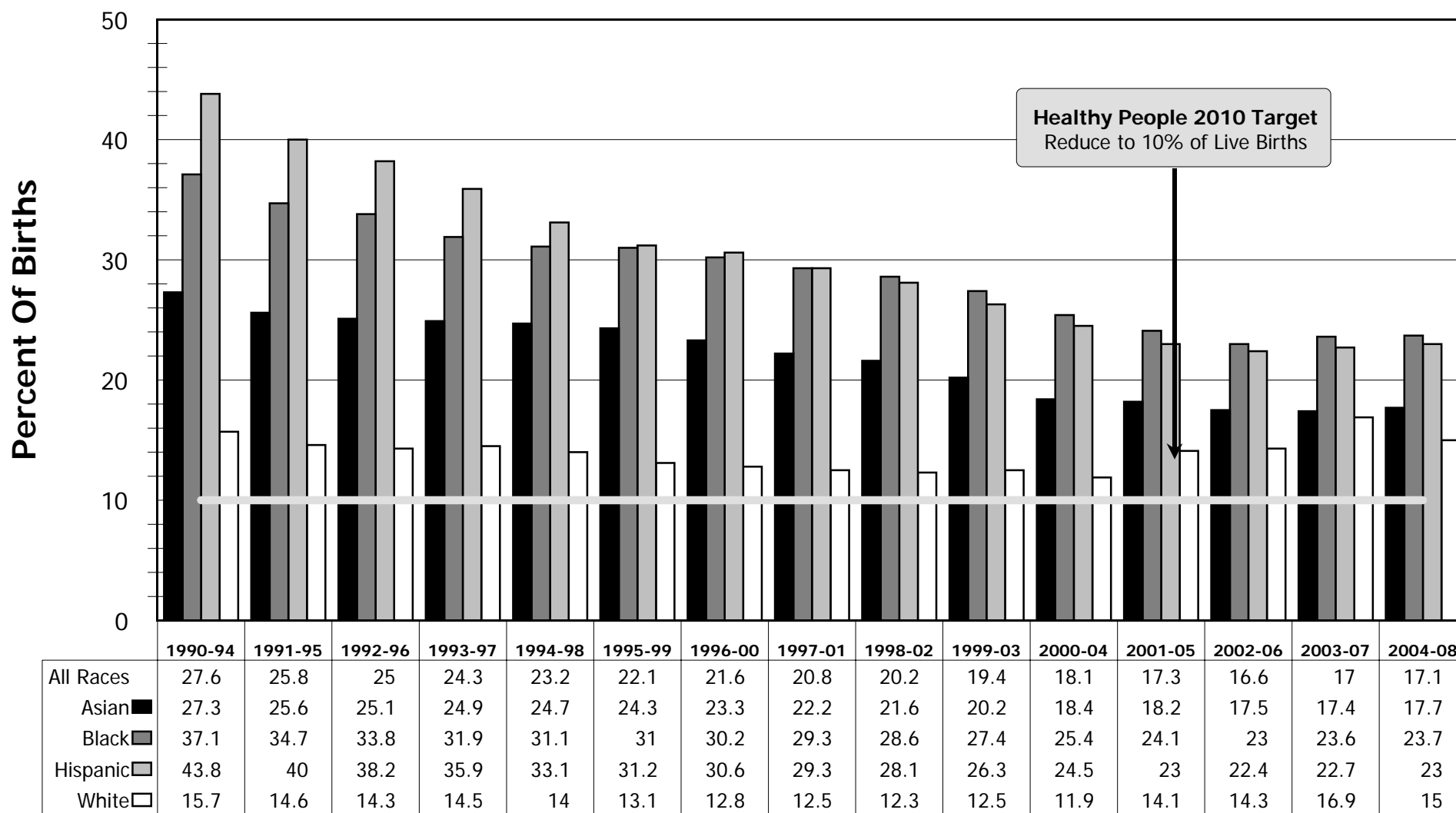
San Mateo County, 1990-2008



Adequate prenatal care is determined by the Kessner Index; adolescents are defined as 17 years of age or younger
 Source Data: California Department of Health Services, Center for Health Statistics, Birth Records 1990-2008

Proportion Of Births With Less Than Adequate Prenatal Care By Maternal Race/Ethnicity

5- Year Moving Averages, San Mateo County, 1990-2008

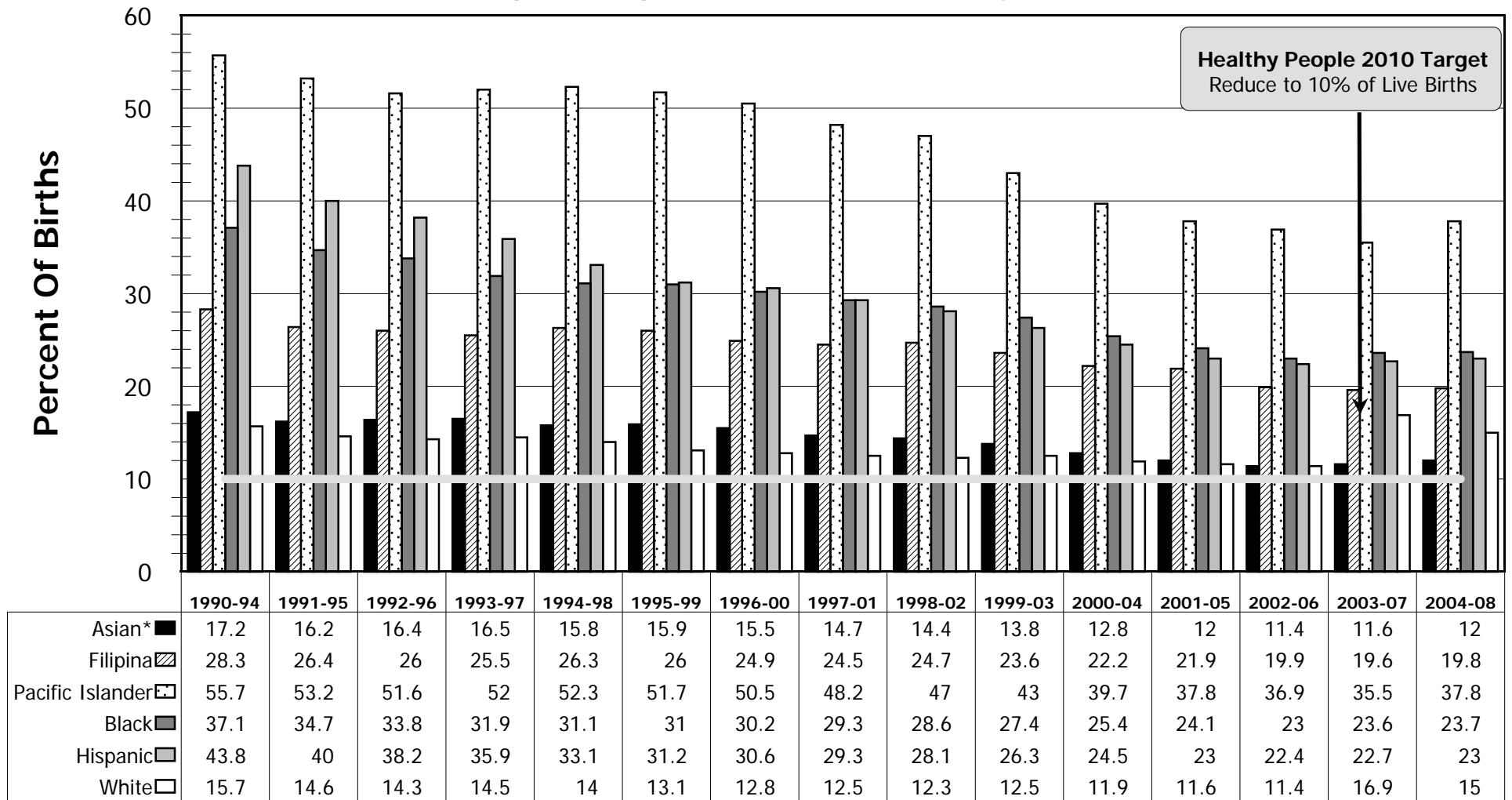


Adequate prenatal care is determined by the Kessner Index

Source Data: California Department of Health Services, Center for Health Statistics, Birth Records 1990-2008

Proportion Of Births Receiving Less Than Adequate Prenatal Care By Maternal Race/Ethnicity

5-Year Moving Averages, San Mateo County, 1990-2008



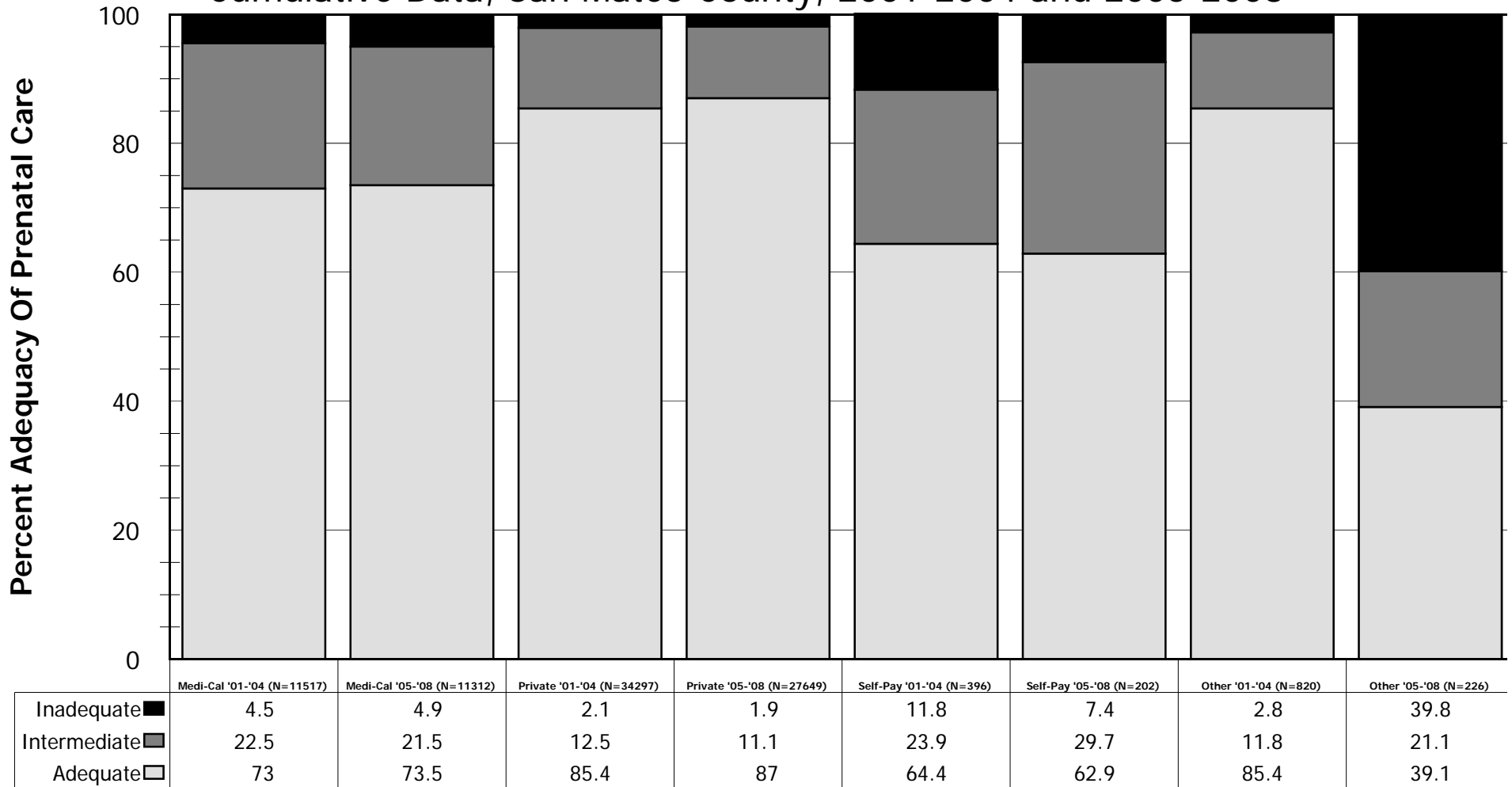
*Non Filipina/Pacific Islander Asians

Adequate prenatal care is determined by the Kessner Index

Source Data: California Department of Health Services, Center for Health Statistics, Birth Records 1990-2008

Adequacy Of Prenatal Care By Principal Source Of Payment For Prenatal Care

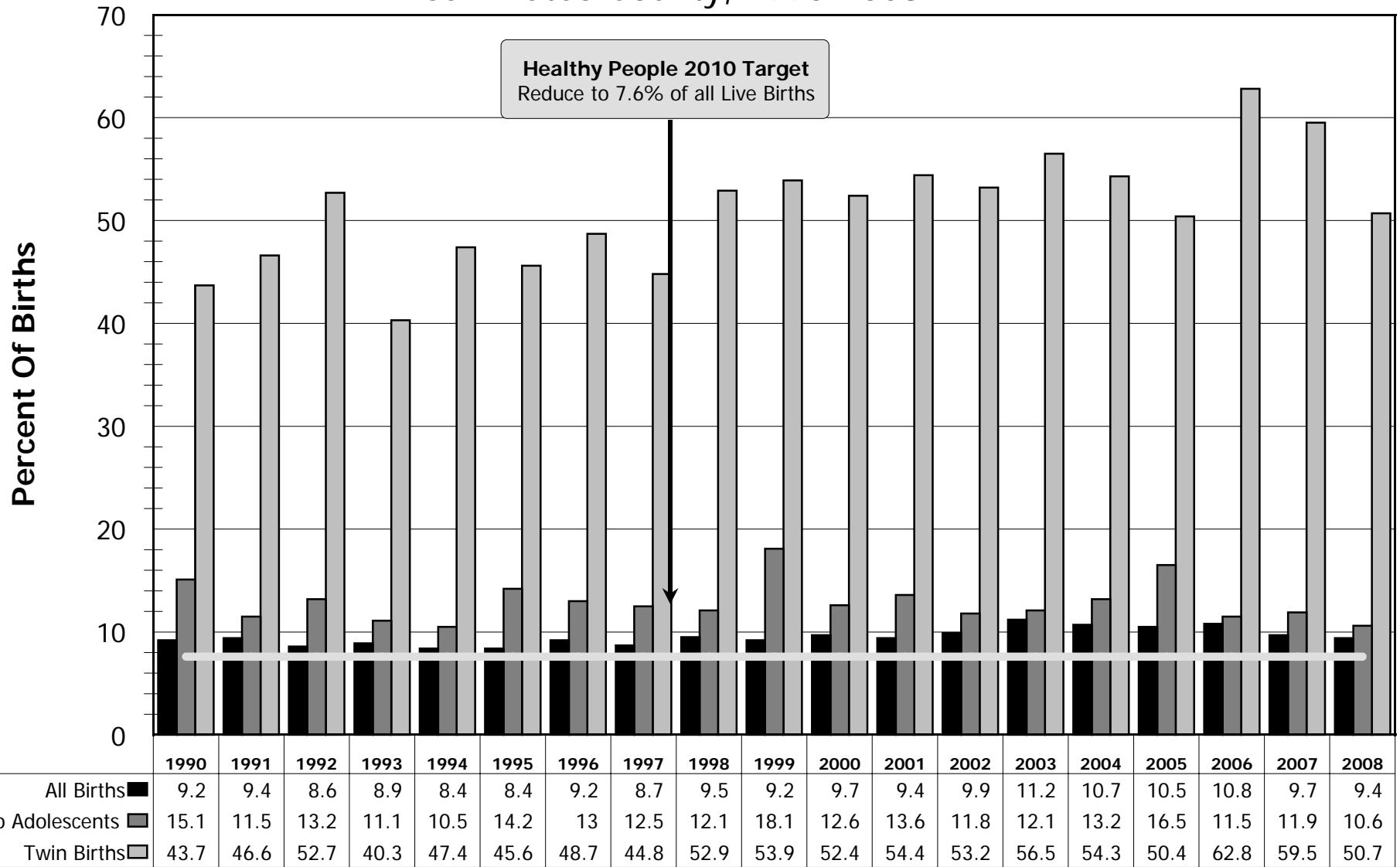
Cumulative Data, San Mateo County, 2001-2004 and 2005-2008



Adequate prenatal care is determined by the Kessner Index; Medi-Cal includes both Medi-Cal and Medi-Cal CPS Program; Private plan includes health maintenance organizations and Blue Cross/Blue Shield; Other includes Medicare, worker's compensation, Title V (MCH funds), other governmental programs, no charge, other non-governmental programs, medically indigent, and unknown
 Source Data: California Department of Health Services, Center for Health Statistics, Birth Records 2001-2008

Preterm Births

San Mateo County, 1990-2008

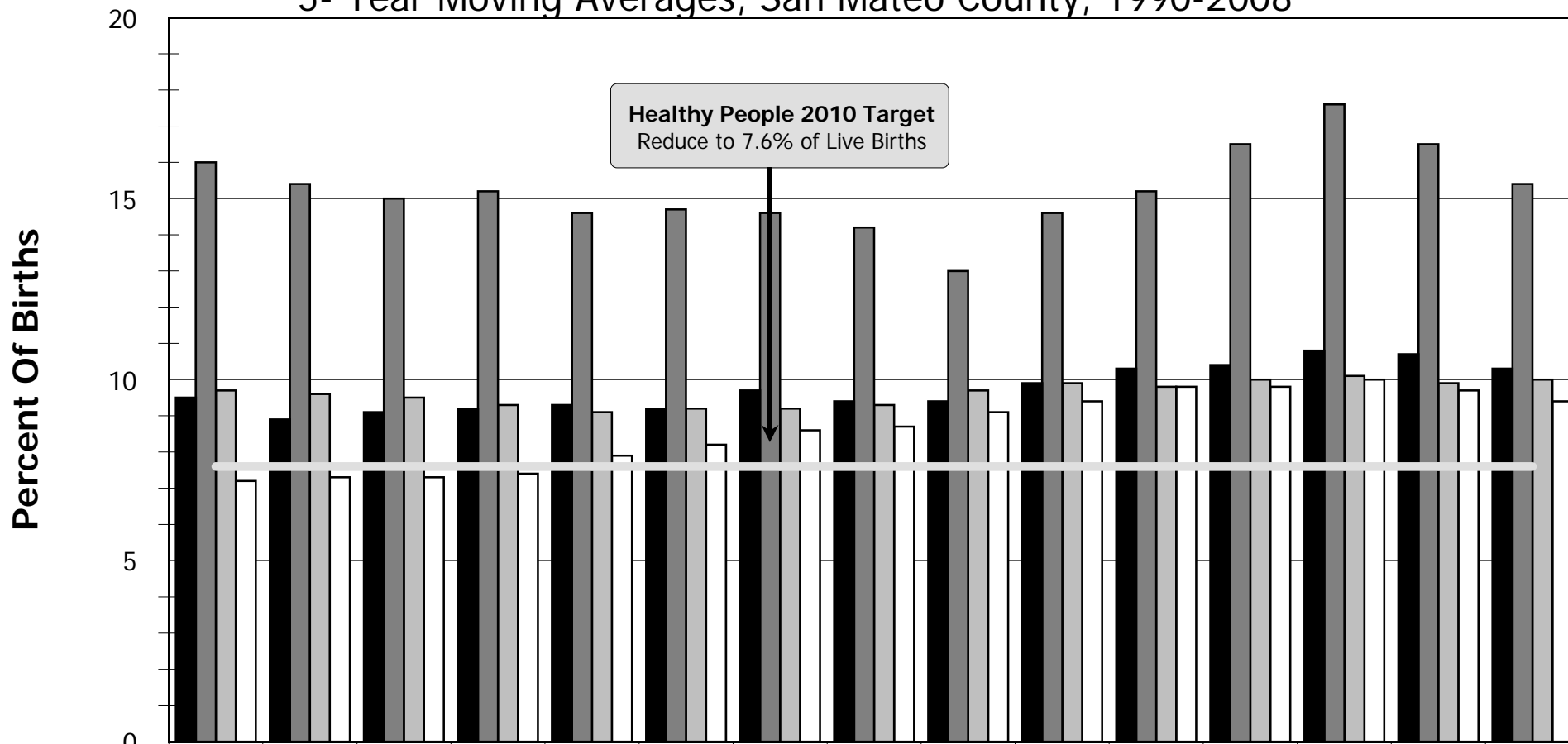


Adolescents are defined as 17 years of age or younger; preterm births are defined as less than 37 weeks or 259 days gestation from last menstrual period

Source Data: California Department of Health Services, Center for Health Statistics, Birth Records 1990-2008

Proportion Of Preterm Births By Maternal Race/Ethnicity

5- Year Moving Averages, San Mateo County, 1990-2008

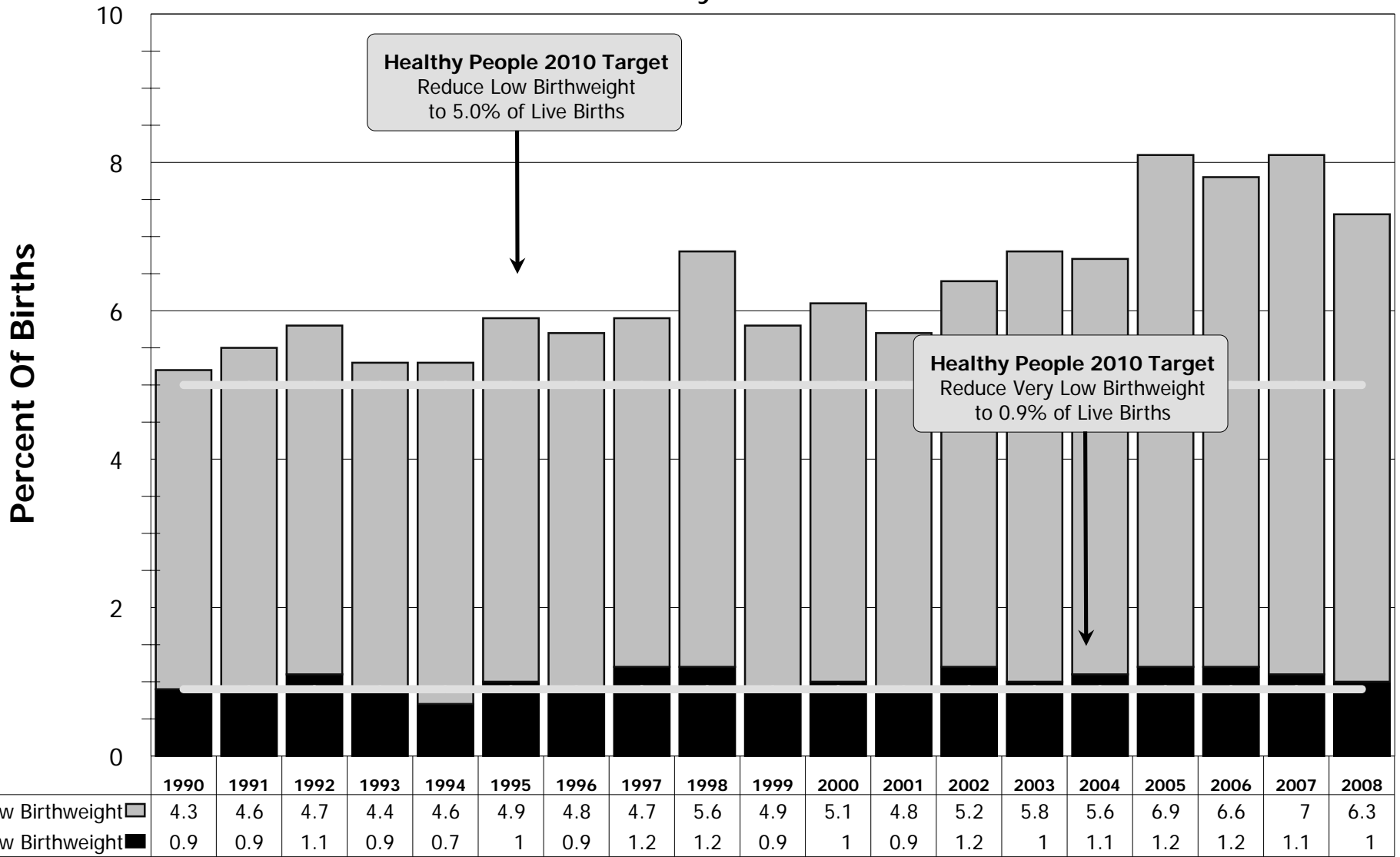


	1990-94	1991-95	1992-96	1993-97	1994-98	1995-99	1996-00	1997-01	1998-02	1999-03	2000-04	2001-05	2002-06	2003-07	2004-08
All Races	8.9	8.7	8.7	8.7	8.9	9	9.3	9.3	9.5	9.9	10.2	10.3	10.6	10.2	10.1
Asian	9.5	8.9	9.1	9.2	9.3	9.2	9.7	9.4	9.4	9.9	10.3	10.4	10.8	10.7	10.3
Black	16	15.4	15	15.2	14.6	14.7	14.6	14.2	13	14.6	15.2	16.5	17.6	16.5	15.4
Hispanic	9.7	9.6	9.5	9.3	9.1	9.2	9.2	9.3	9.7	9.9	9.8	10	10.1	9.9	10
White	7.2	7.3	7.3	7.4	7.9	8.2	8.6	8.7	9.1	9.4	9.8	9.8	10	9.7	9.4

Preterm births are defined as less than 37 weeks or 259 days gestation from last menstrual period
 Source Data: California Department of Health Services, Center for Health Statistics, Birth Records 1990-2008

Low Birthweight Deliveries

San Mateo County, 1990-2008



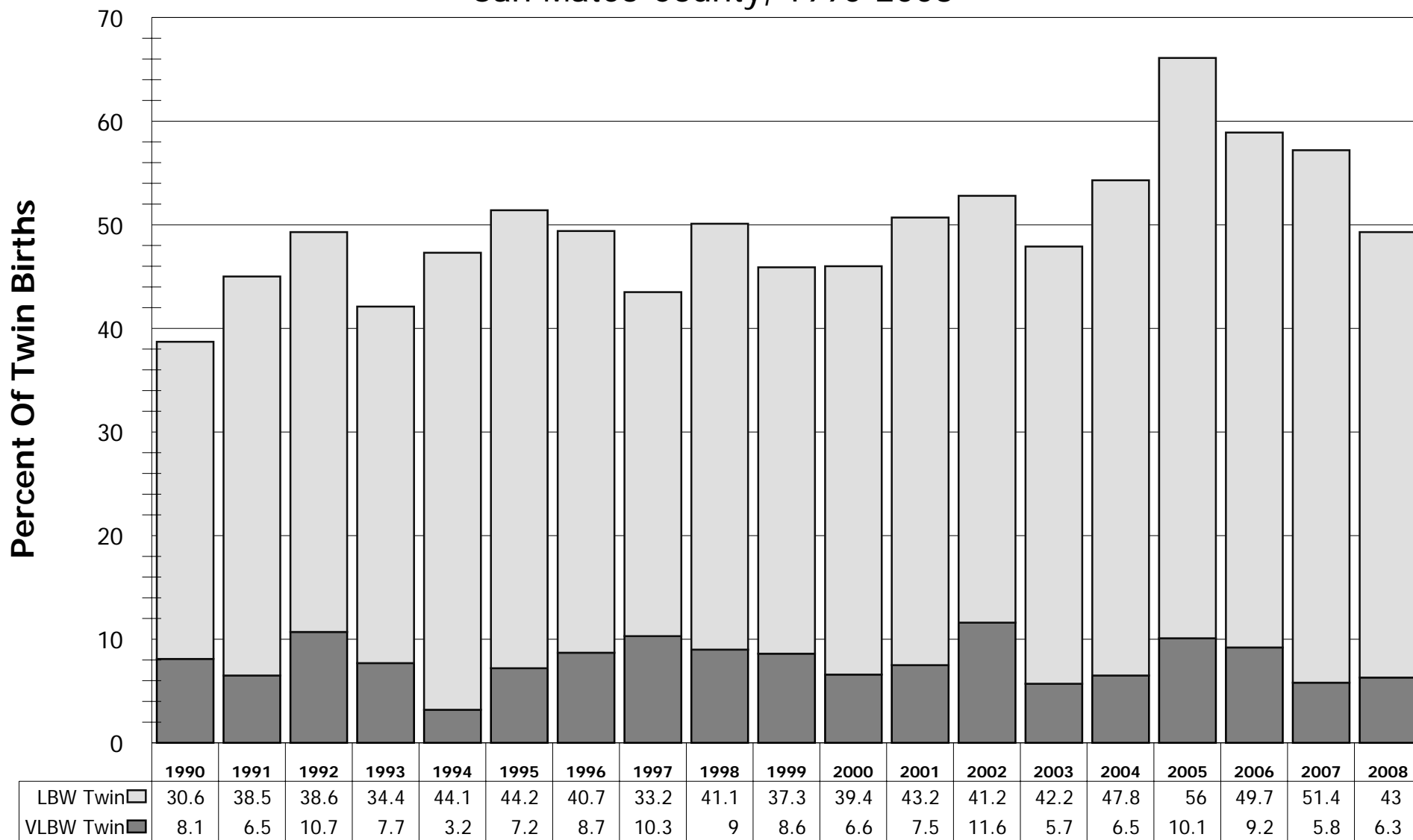
Low Birthweight (LBW): newborns weighing < 2500 grams or 5.5 pounds at birth (exclusive of very low birthweight)

Very Low Birthweight (VLBW): newborns weighing < 1500 grams or 3.3 pounds at birth

Source Data: California Department of Health Services, Center for Health Statistics, Birth Records 1990-2008

Low Birthweight Among Twin Births

San Mateo County, 1990-2008



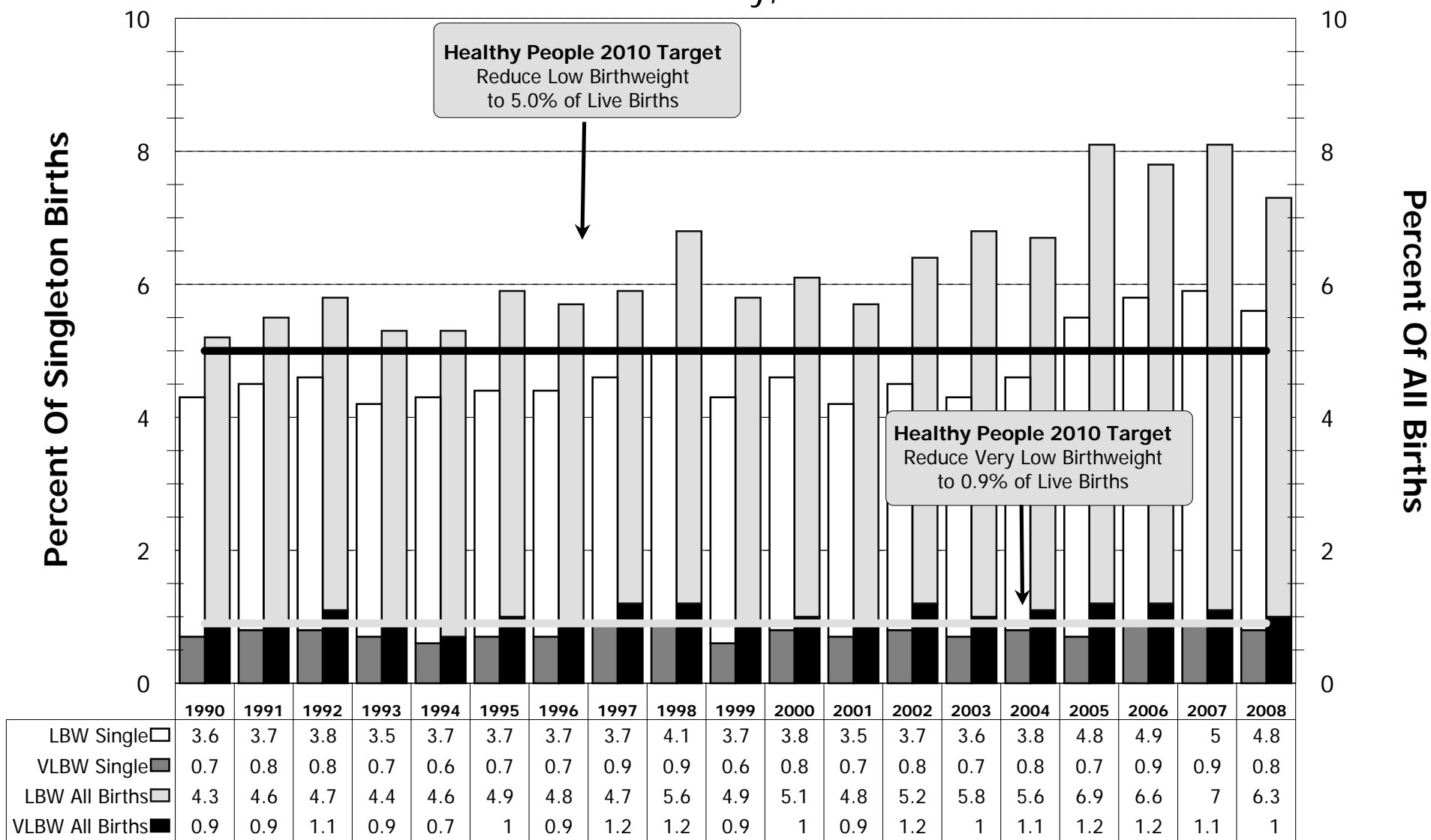
Low Birthweight (LBW): newborns weighing < 2500 grams or 5.5 pounds at birth (exclusive of very low birthweight)

Very Low Birthweight (VLBW): newborns weighing < 1500 grams or 3.3 pounds at birth

Source Data: California Department of Health Services, Center for Health Statistics, Birth Records 1990-2008

Impact Of Birth Type On Low Birthweight Deliveries

San Mateo County, 1990-2008



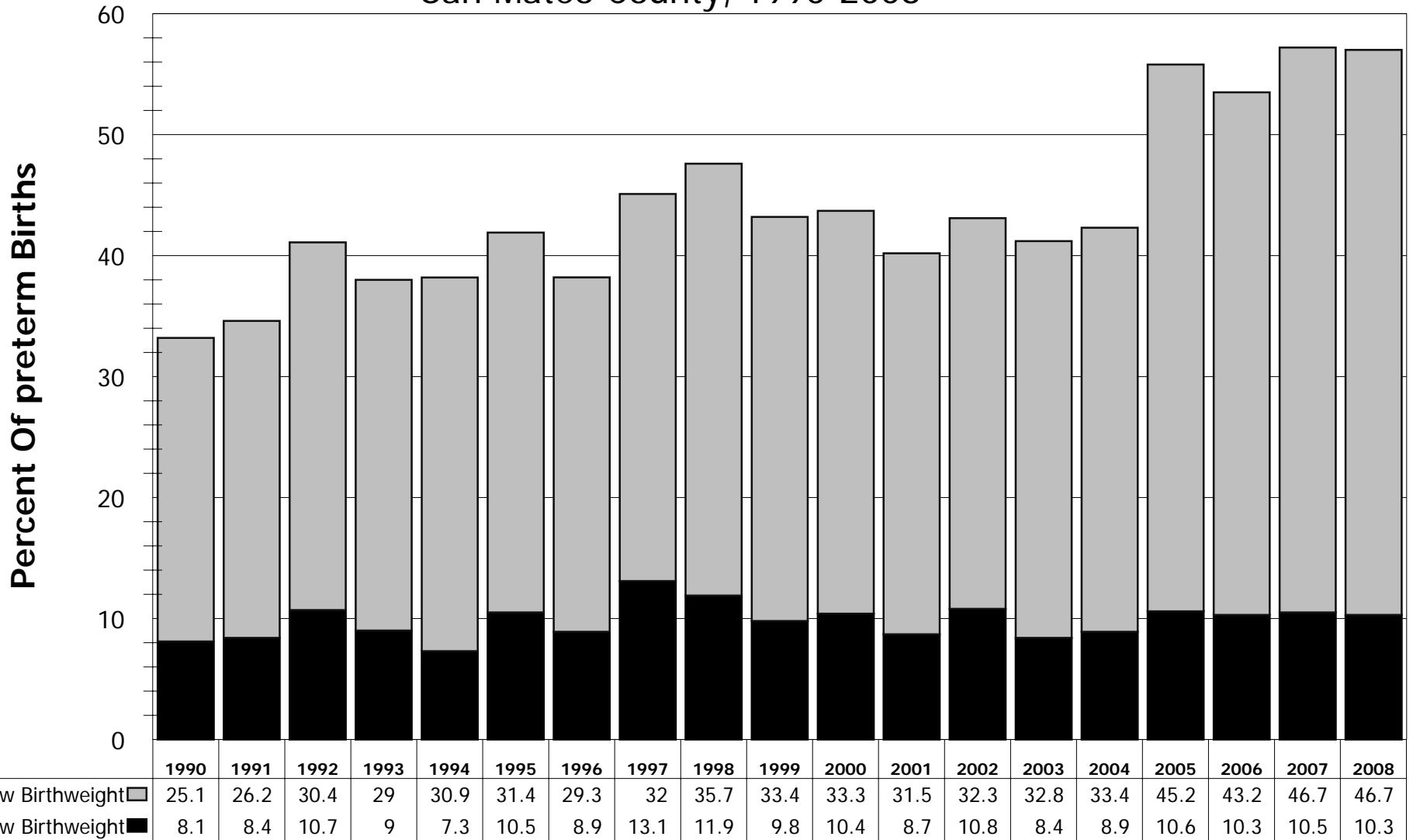
Low Birthweight (LBW): newborns weighing < 2500 grams or 5.5 pounds at birth (exclusive of very low birthweight)

Very Low Birthweight (VLBW): newborns weighing < 1500 grams or 3.3 pounds at birth

Source Data: California Department of Health Services, Center for Health Statistics, Birth Records 1990-2008

Low Birthweight Deliveries Among Preterm Births

San Mateo County, 1990-2008



Low Birthweight: newborns weighing < 2500 grams or 5.5 pounds at birth (exclusive of very low birthweight)

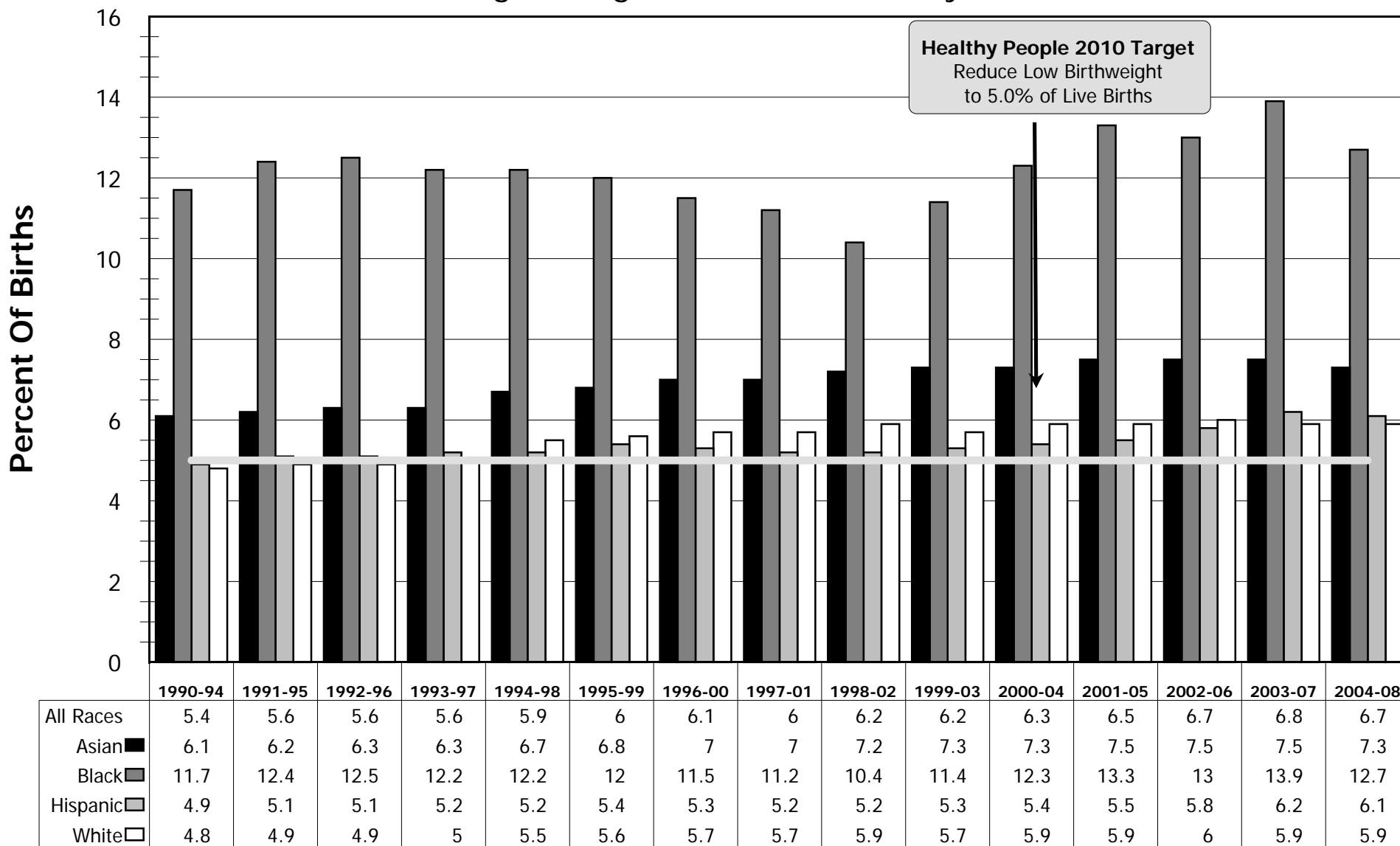
Very Low Birthweight: newborns weighing < 1500 grams or 3.3 pounds at birth

Preterm births are defined as less than 37 weeks or 259 days gestation from last menstrual period

Source Data: California Department of Health Services, Center for Health Statistics, Birth Records 1990-2008

Low Birthweight Deliveries By Maternal Race/Ethnicity

5- Year Moving Averages San Mateo County, 1990-2008

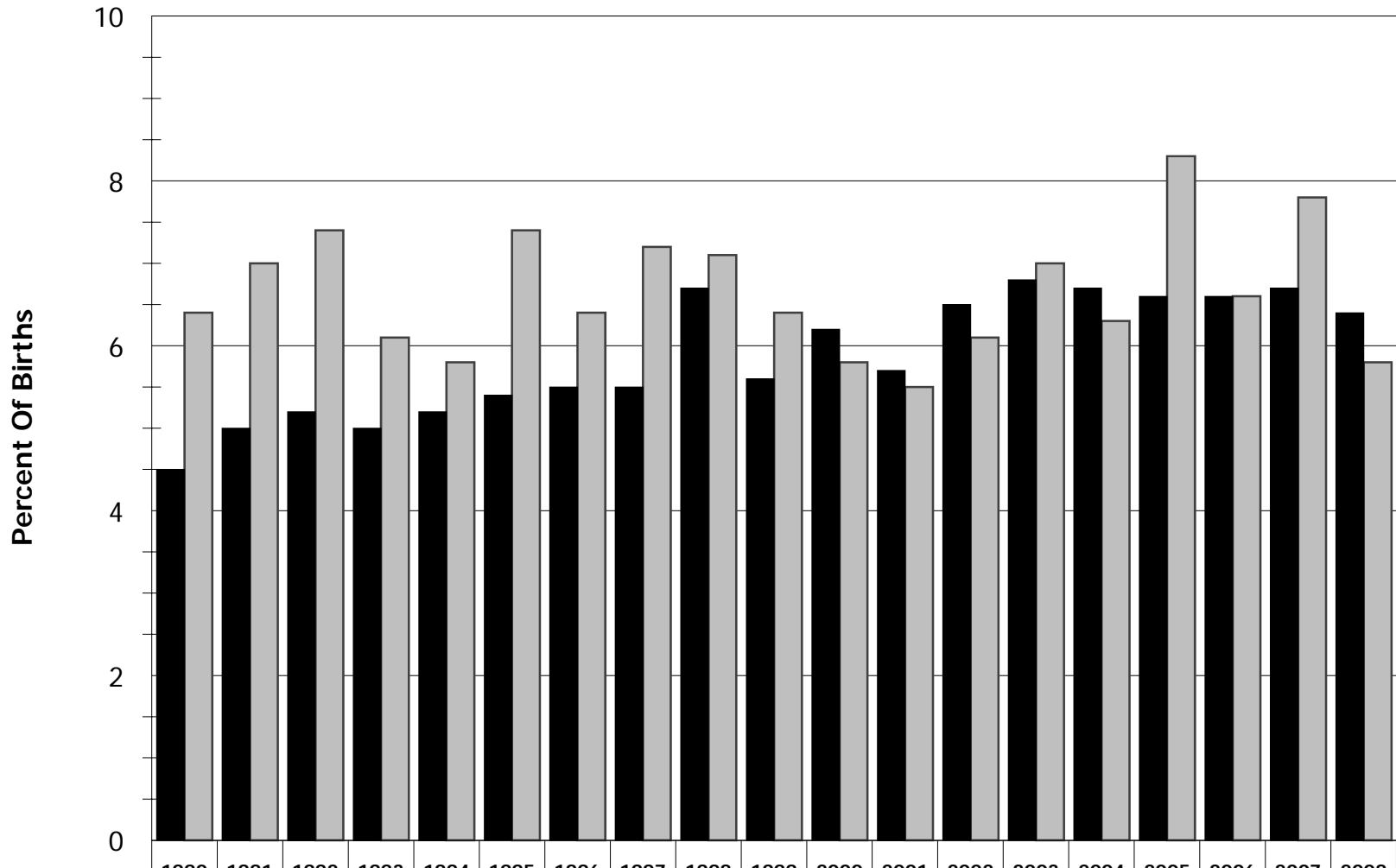


Low Birthweight: newborns weighing < 2500 grams or 5.5 pounds at birth (inclusive of very low birthweight)

Source Data: California Department of Health Services, Center for Health Statistics, Birth Records 1990-2008

Low Birthweight Deliveries By Adequacy Of Prenatal Care

San Mateo County, 1990-2008



	1990	1991	1992	1993	1994	1995	1996	1997	1998	1999	2000	2001	2002	2003	2004	2005	2006	2007	2008
Adequate Care	4.5	5	5.2	5	5.2	5.4	5.5	5.5	6.7	5.6	6.2	5.7	6.5	6.8	6.7	6.6	6.6	6.7	6.4
Less Than Adequate Care	6.4	7	7.4	6.1	5.8	7.4	6.4	7.2	7.1	6.4	5.8	5.5	6.1	7	6.3	8.3	6.6	7.8	5.8

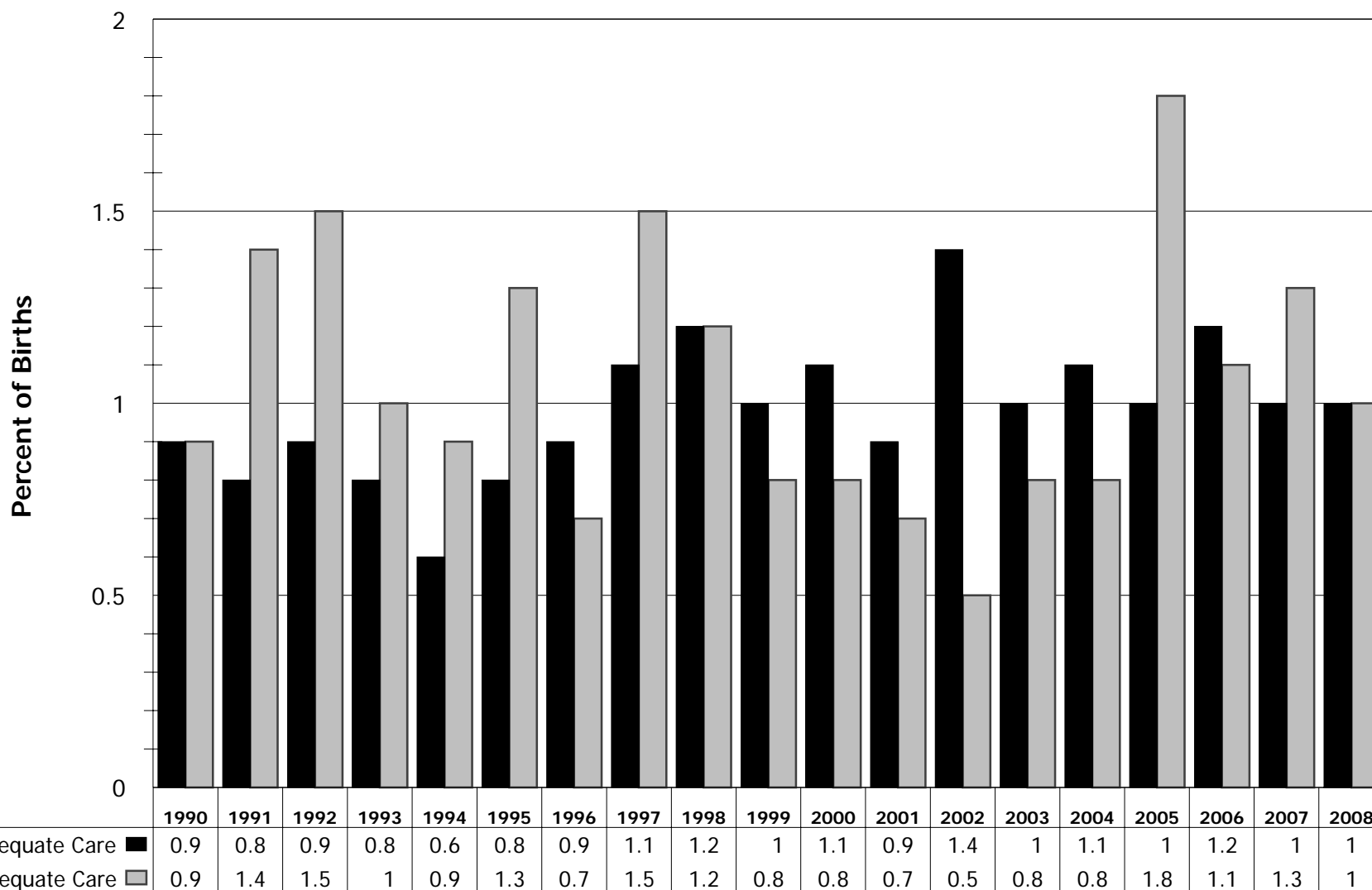
Low Birthweight (LBW): newborns weighing < 2500 grams or 5.5 pounds at birth (inclusive of very low birthweight)

Adequate prenatal care is determined by the Kessner Index

Source Data: California Department of Health Services, Center for Health Statistics, Birth Records 1990-2008

Very Low Birthweight Deliveries By Adequacy Of Prenatal Care

San Mateo County, 1990-2008



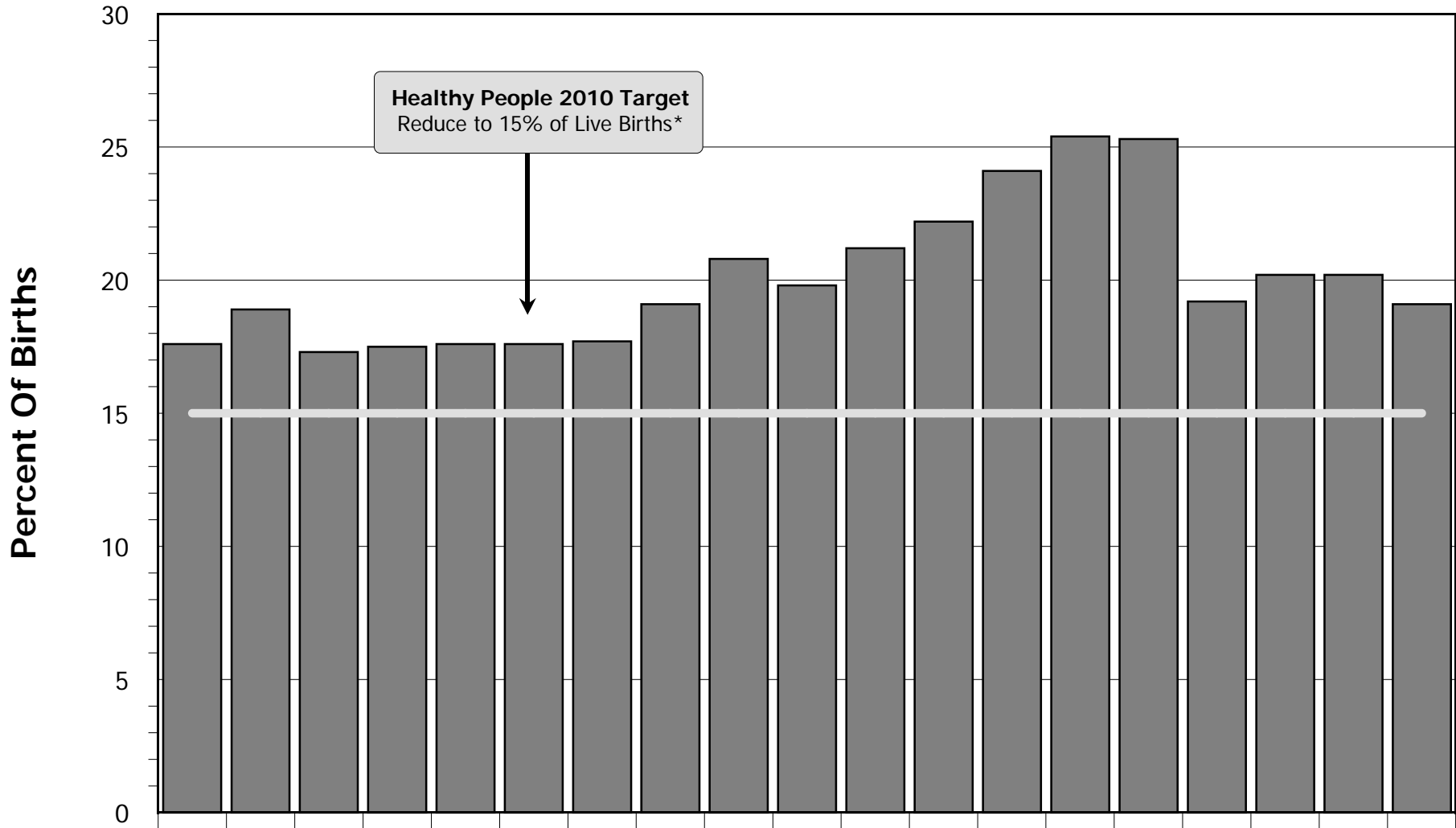
Very Low Birthweight (VLBW): newborns weighing < 1500 grams or 3.3 pounds at birth

Adequate prenatal care is determined by the Kessner Index

Source Data: California Department of Health Services, Center for Health Statistics, Birth Records 1990-2008

Proportion Of Births Delivered By Cesarean Section

San Mateo County, 1990-2008

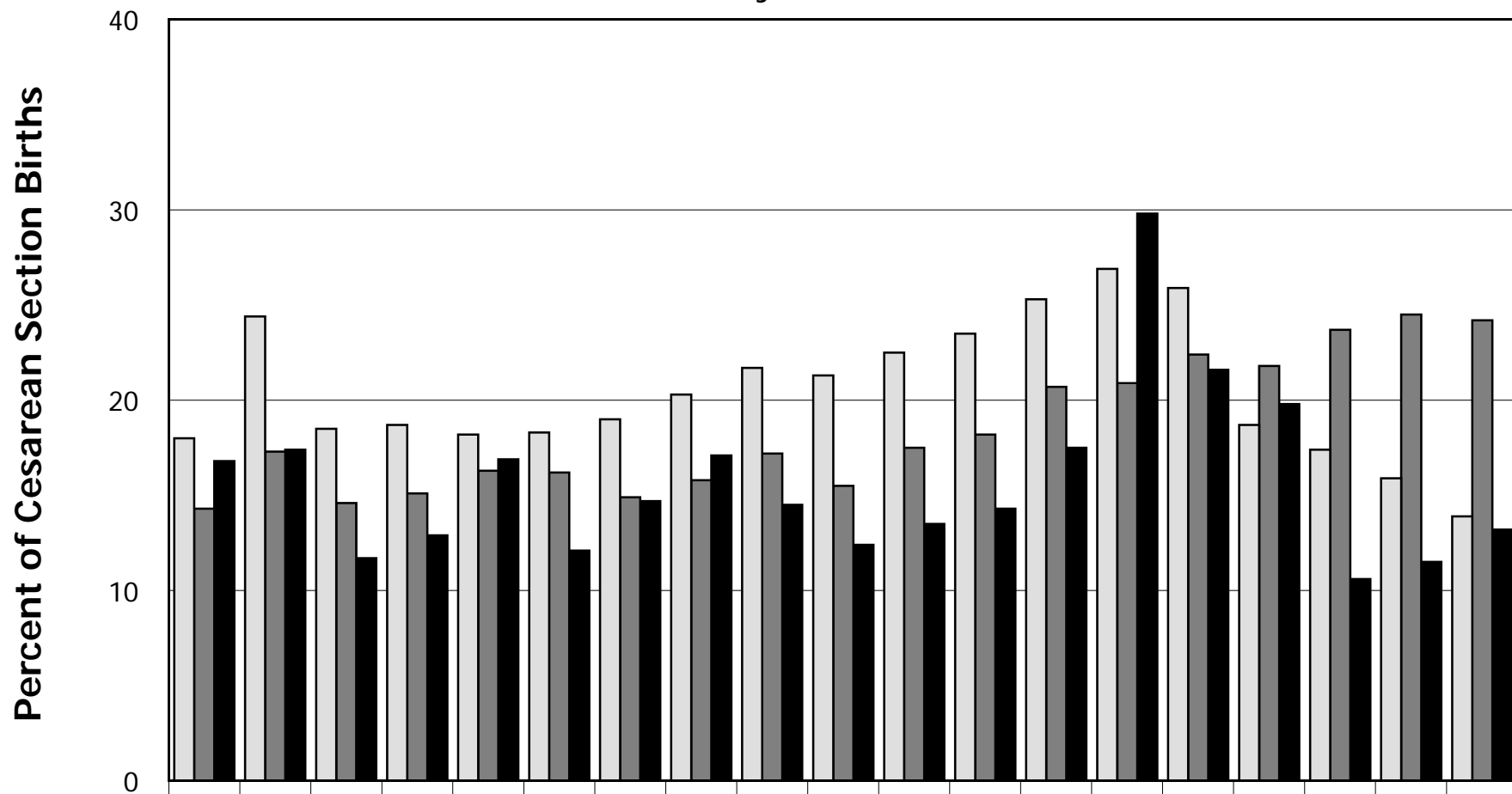


	1990	1991	1992	1993	1994	1995	1996	1997	1998	1999	2000	2001	2002	2003	2004	2005	2006	2007	2008
Number Of Cesareans	1887	2003	1815	1772	1787	1722	1744	1882	2060	1956	2172	2243	2413	2564	2540	1913	1983	1997	1864
Proportion Of Births	17.6	18.9	17.3	17.5	17.6	17.6	17.7	19.1	20.8	19.8	21.2	22.2	24.1	25.4	25.3	19.2	20.2	20.2	19.1

*For women giving birth for the first time; if prior cesarean section, then target is 63.0%
 Source Data: California Department of Health Services, Center for Health Statistics, Birth Records 1990-2008

Principal Source Of Payment and Proportion of Cesarean Section Deliveries

San Mateo County, 1990-2008

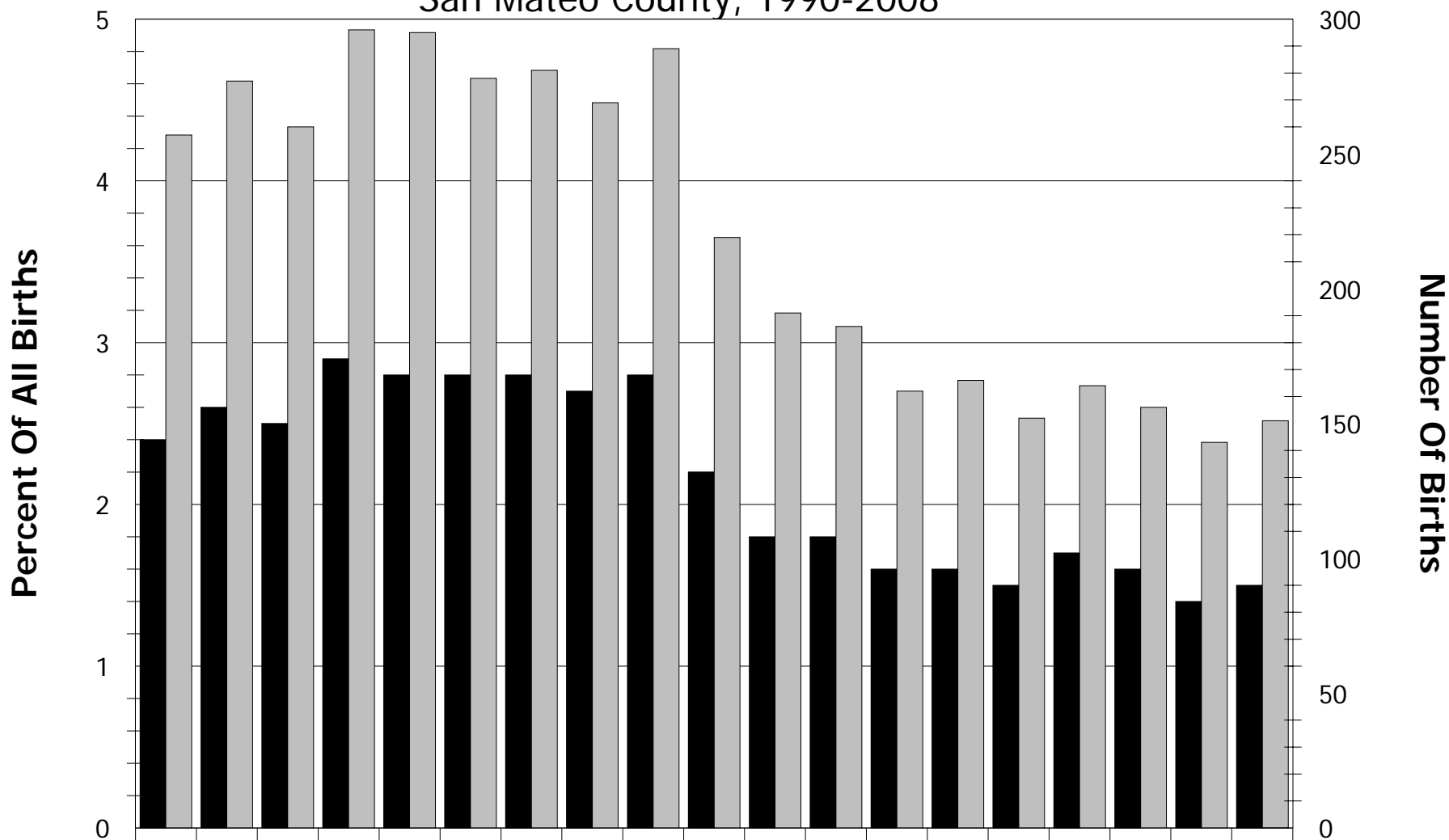


	1990	1991	1992	1993	1994	1995	1996	1997	1998	1999	2000	2001	2002	2003	2004	2005	2006	2007	2008
Prepaid Plan/Private	18	24.4	18.5	18.7	18.2	18.3	19	20.3	21.7	21.3	22.5	23.5	25.3	26.9	25.9	18.7	17.4	15.9	13.9
MediCal	14.3	17.3	14.6	15.1	16.3	16.2	14.9	15.8	17.2	15.5	17.5	18.2	20.7	20.9	22.4	21.8	23.7	24.5	24.2
Self-Pay/Other	16.8	17.4	11.7	12.9	16.9	12.1	14.7	17.1	14.5	12.4	13.5	14.3	17.5	29.8	21.6	19.8	10.6	11.5	13.2

Pre-Paid includes health maintenance organizations and Blue Cross/Blue Shield; Other includes Medicare, worker's compensation, Title V (MCH funds), other governmental programs, no charge, other non-governmental programs, medically indigent, and unknown
 Source Data: California Department of Health Services, Center for Health Statistics, Birth Records 1990-2008

Births To Adolescents

San Mateo County, 1990-2008



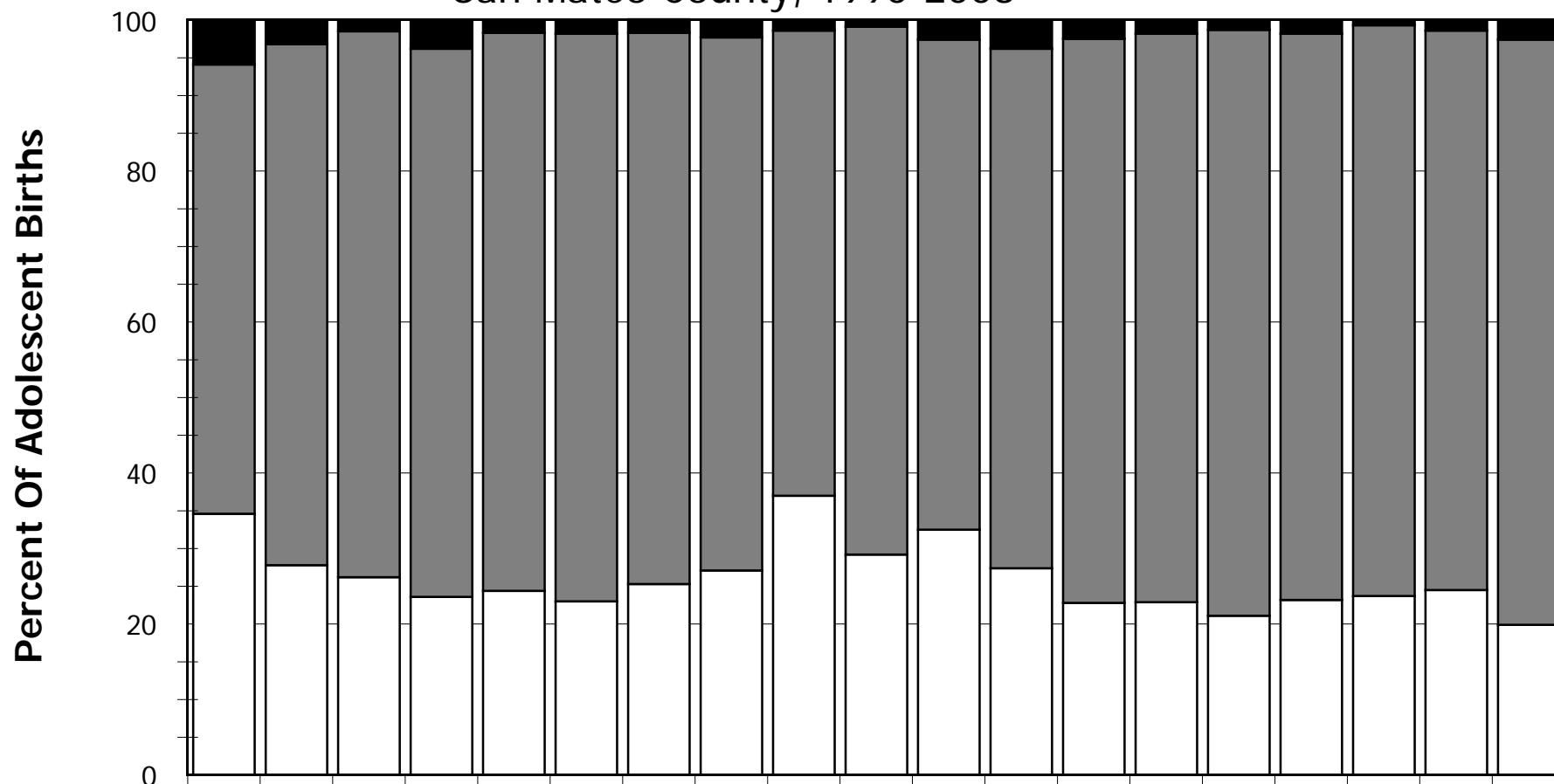
Number of Births	257	277	260	296	295	278	281	269	289	219	191	186	162	166	152	164	156	143	151
Percent of All Births	2.4	2.6	2.5	2.9	2.8	2.8	2.8	2.7	2.8	2.2	1.8	1.8	1.6	1.6	1.5	1.7	1.6	1.4	1.5

Adolescents are defined as 17 years of age or younger

Source Data: California Department of Health Services, Center for Health Statistics, Birth Records 1990-2008

Principal Source Of Payment For Deliveries To Adolescents

San Mateo County, 1990-2008



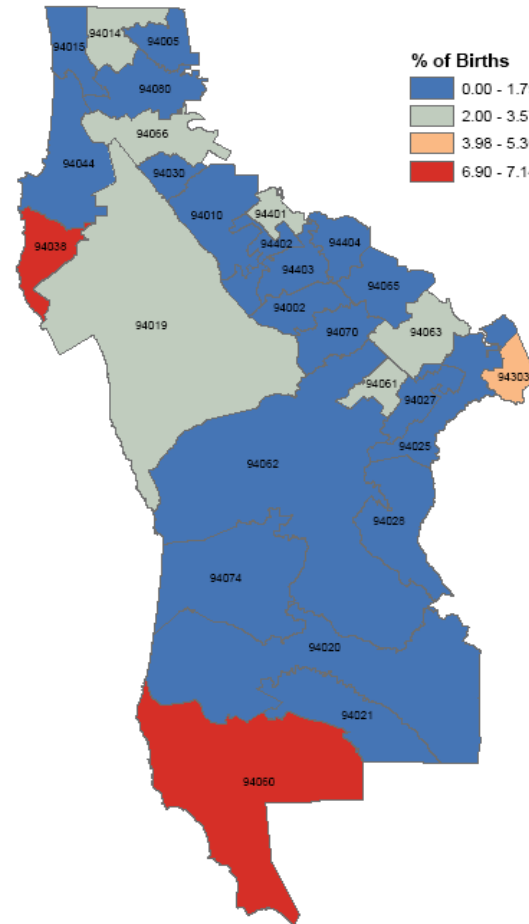
	1990	1991	1992	1993	1994	1995	1996	1997	1998	1999	2000	2001	2002	2003	2004	2005	2006	2007	2008
Self-Pay/Other	5.8	3.2	1.5	3.7	1.7	1.8	1.8	2.2	1.4	0.9	2.6	3.8	2.5	1.8	1.3	1.8	0.6	1.4	2.6
Medi-Cal	59.5	69	72.3	72.6	73.9	75.2	73	70.6	61.6	69.9	64.9	68.8	74.7	75.3	77.6	75	75.6	74.1	77.5
Prepaid Plan/Private	34.6	27.8	26.2	23.6	24.4	23	25.3	27.1	37	29.2	32.5	27.4	22.8	22.9	21.1	23.2	23.7	24.5	19.9

Adolescents are defined as 17 years of age or younger; Pre-Paid includes health maintenance organizations and Blue Cross/Blue Shield; Other includes Medicare, worker's compensation, Title V (MCH funds), other governmental programs, no charge, other non-governmental programs, medically indigent, and unknown

Source Data: California Department of Health Services, Center for Health Statistics, Birth Records 1990-2008

Births To Adolescent Females By Zip Code Of Residence

San Mateo County, 2008

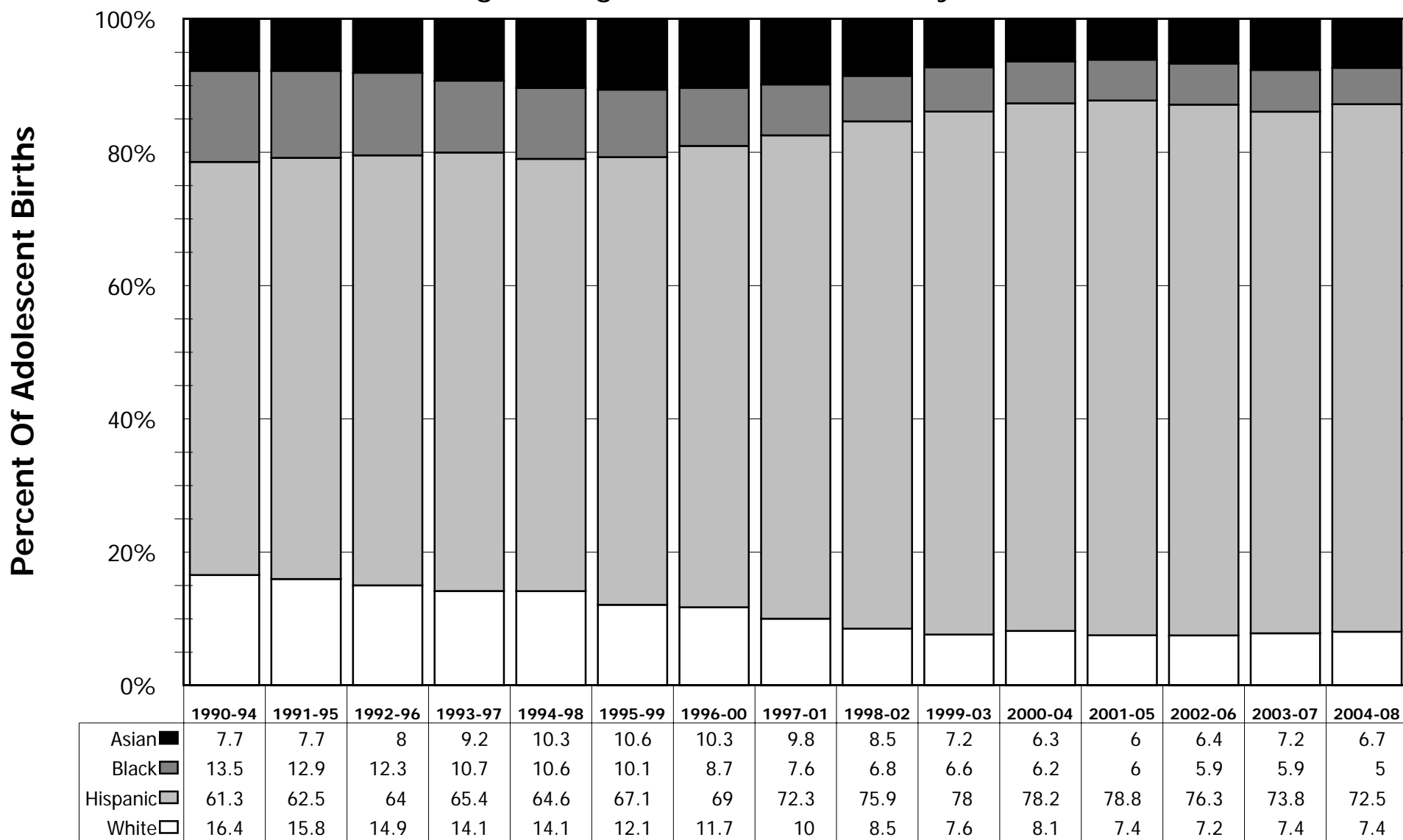


Adolescents are defined as 17 years of age or younger

Source Data: California Department of Health Services, Center for Health Statistics, Birth Records 2008

Distribution Of Births To Adolescents By Race/Ethnicity

5-Year Moving Averages, San Mateo County, 1990-2008

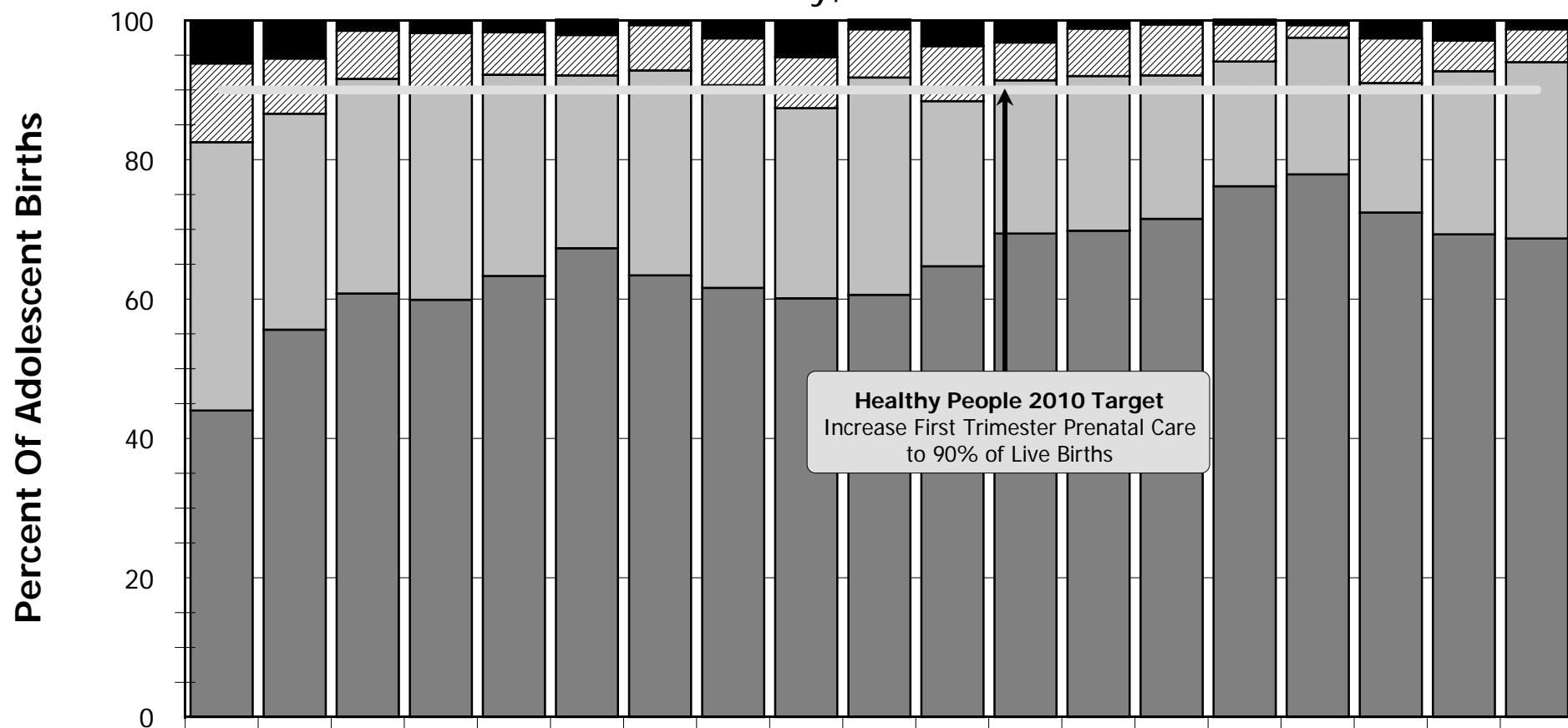


Adolescents are defined as 17 years of age or younger

Source Data: California Department of Health Services, Center for Health Statistics, Birth Records 1990-2008

Proportion Of Adolescent Births By Trimester Of First Prenatal Visit

San Mateo County, 1990-2008



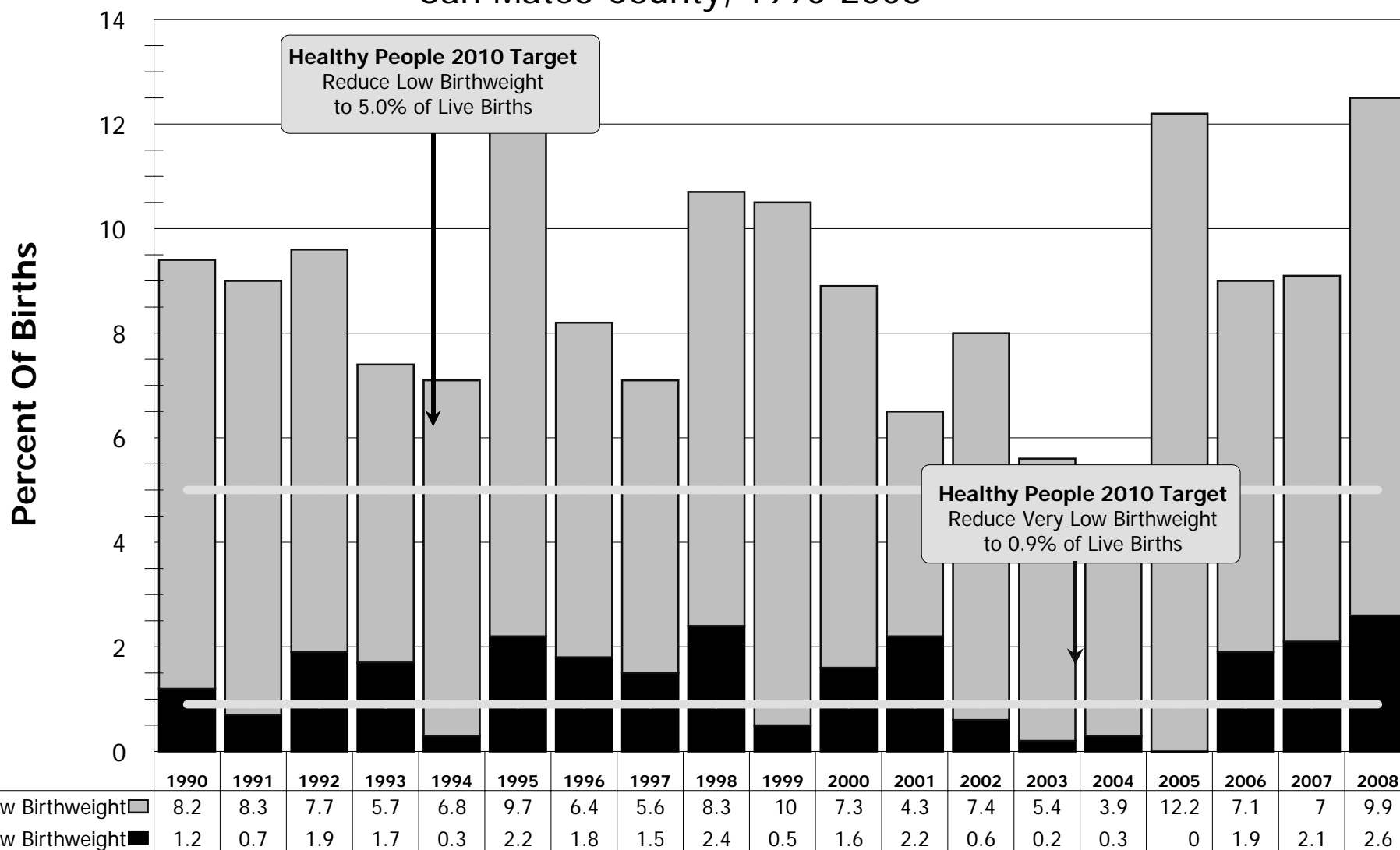
	1990	1991	1992	1993	1994	1995	1996	1997	1998	1999	2000	2001	2002	2003	2004	2005	2006	2007	2008
No Prenatal Care	6.2	5.4	1.5	1.7	1.7	2.2	0.7	2.6	5.2	1.4	3.7	3.2	1.2	0.6	0.7	0.6	2.6	2.9	1.3
3rd Trimester	11.3	7.9	6.9	8.2	6.1	5.8	6.5	6.7	7.3	6.9	7.9	5.4	6.8	7.3	5.3	1.8	6.4	4.4	4.7
2nd Trimester	38.5	31	30.8	30.1	28.9	24.8	29.4	29.1	27.3	31.2	23.7	22	22.2	20.6	17.9	19.6	18.6	23.4	25.3
1st Trimester	44	55.6	60.8	59.9	63.3	67.3	63.4	61.6	60.1	60.6	64.7	69.4	69.8	71.5	76.2	77.9	72.4	69.3	68.7

Adolescents are defined as 17 years of age or younger

Source Data: California Department of Health Services, Center for Health Statistics, Birth Records 1990-2008

Low Birthweight Deliveries To Adolescents

San Mateo County, 1990-2008



Adolescents are defined as 17 years of age or younger

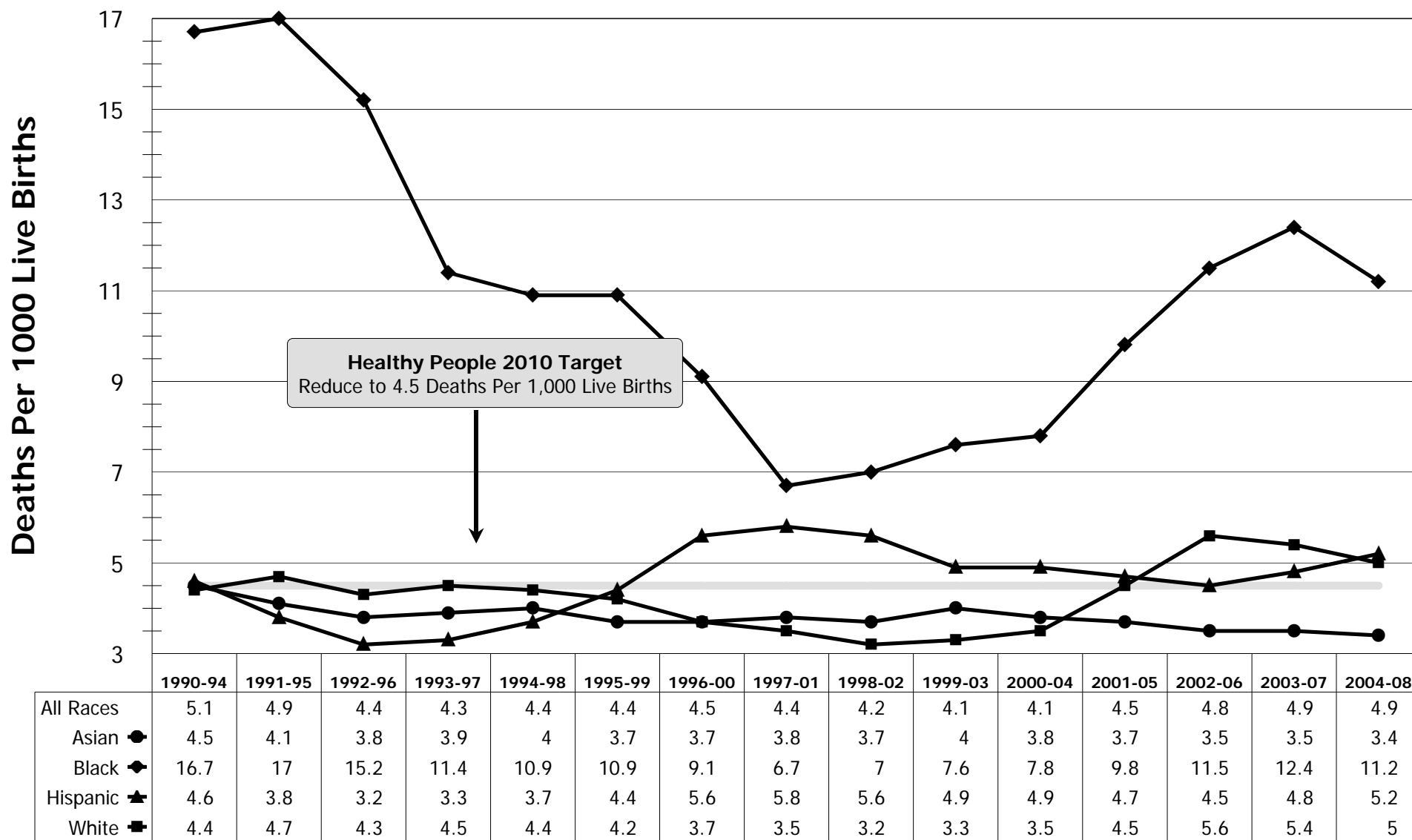
Low Birthweight: newborns weighing < 2500 grams or 5.5 pounds at birth (exclusive of very low birthweight)

Very Low Birthweight: newborns weighing < 1500 grams or 3.3 pounds at birth

Source Data: California Department of Health Services, Center for Health Statistics, Birth Records 1990-2008

Infant Mortality By Race/Ethnicity

5-Year Moving Averages, San Mateo County, 1990-2008

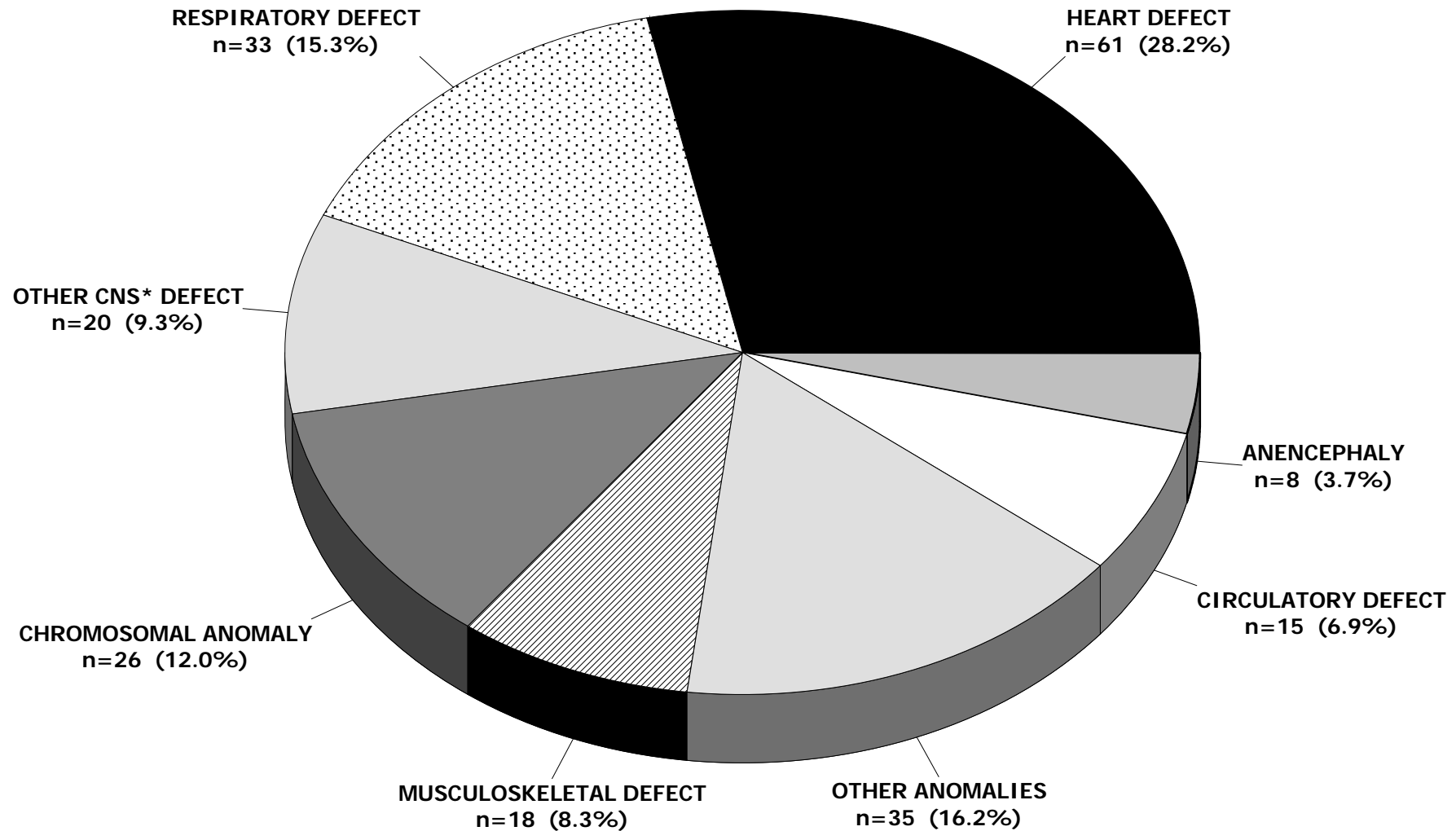


Rates are unadjusted; infants defined as under one year of age

Source Data: California Department of Health Services, Center for Health Statistics, Death Records 1990-2008

Major Congenital Causes Of Infant Mortality

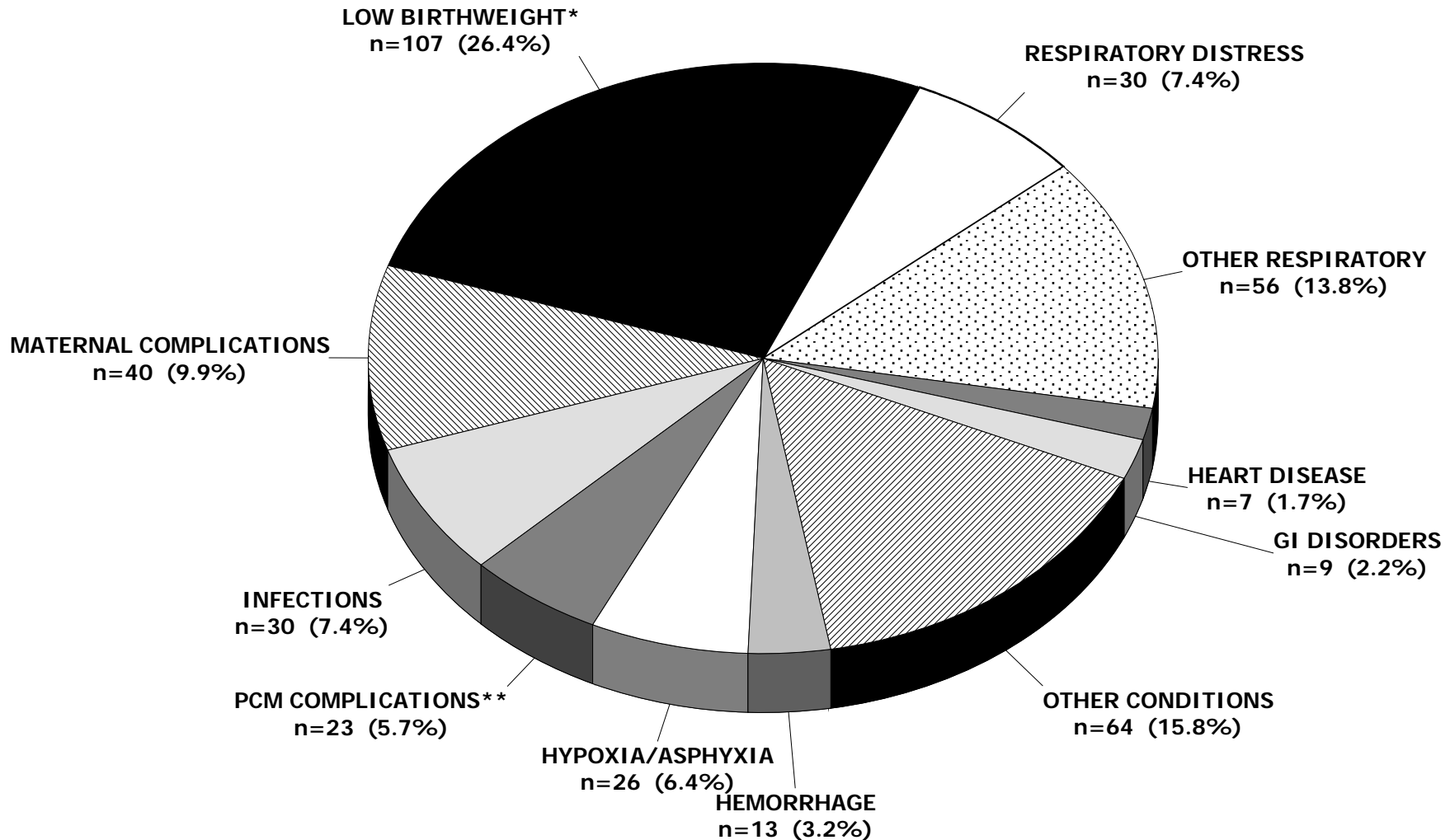
Cumulative Data, San Mateo County, 1990-2008



There were 220 total infant deaths due to congenital causes from 1990-2008 (numbers not adjusted for comparability ratios)
Infants defined as under one year of age; congenital causes are defects and anomalies present at birth; *central nervous system
Source Data: California Department of Health Services, Center for Health Statistics, Death Records 1990-2008

Major Perinatal Causes Of Infant Mortality

Cumulative Data, San Mateo County, 1990-2008



There were 406 total infant deaths due to perinatal causes from 1990-2004 (numbers not adjusted for comparability ratios)

Infants defined as under one year of age; perinatal causes are conditions arising during the perinatal period (28 weeks gestation to 28 days neonate)

*Includes premature births; **Complications related to the placenta, umbilical cord, and other membranes

Source Data: California Department of Health Services, Center for Health Statistics, Death Records 1990-2008